



SafetyLink®

*Innovative
Fall Protection*

2020 **ANCHORS & LIFELINE CATALOGUE**

‘Innovative Fall Protection’

SafetyLink is a global leader in designing unique energy absorbing height safety systems.

SafetyLink’s team provide clients with comprehensive training, data and technical information delivering protection to workers in a multitude of scenarios.



SafetyLink Webinar
Online Training Link

About





HEIGHT SAFETY PERMANENT ROOF ANCHORS AND HORIZONTAL LIFELINE SYSTEMS

An Australian company established in 1998, SafetyLink is a global leader in design, manufacture and distribution of quality height safety systems. Recognised for pioneering the first energy absorbing anchor point, this same technology has been integrated into the Frog range of products.

All anchor points, lifelines and ladder systems manufactured by SafetyLink are extensively tested to meet and exceed industry standards. Tests are conducted by accredited facilities in a multitude of scenarios ensuring that our height safety systems can be relied upon beyond the test laboratory. We test to European Standards EN795, CEN/TS16415, Australian Standards AS/NZS 1891.4, 5532 and USA Standards OSHA/ANSI 1926.502, Z359.7.

SafetyLink

Working at heights is something SafetyLink takes seriously, with comprehensive installation instructions, online training and mobile applications all supported with an experienced technical team. Our online platform enables easy access to our learning management system, product information and lifeline system builds all in the one place.

- Supply a large range of height safety systems that protect workers from the ground up.
- All products tested and manufactured to current Standards.
- Access to online training modules 24/7.
- Supply of installation guides and product data sheets.
- Assisted system design layout and advice.
- Extensive technical support with collectively over 100 years of experience in the height safety industry.

Visit us at www.safetylink.com for the latest training, height safety resources and fall protection products.

Contents

© 2018, SafetyLink Pty Ltd, Australia.

Patents : SafetyLink Pty Ltd has a multitude of patents, patents pending, design applications, trademarks and copyrighted documents both lodged and issued.

Should you wish to know the progress of our intellectual property on a specific product please email us on info@safetylink.com and quote the product code.

Version: 05/20

ANCHORS 6

FrogLink Anchors	8
TileLink Anchors	10
Steel Purlin Anchors	12
Concrete Anchors	14
Rafter Mounted Anchors	22
Surface Mounted Anchors	24
Eyebolt / Eyebolt	28
Temporary Anchor	30

LIFELINES 32

Surface Mounted FrogLine	34
Standing Seam Mounted FrogLine	38
Purlin Mounted Retro FrogLine	40
Concrete Mounted FrogLine	42
DonutLink Concrete Mounted FrogLine	44
Steel Mounted FrogLine	48
Membrane Mounted FrogLine	52
Concrete Wall Mounted FrogLine	54
Steel Wall Mounted FrogLine	56
Concrete Mounted Overhead FrogLine	58
Steel Mounted Overhead FrogLine	60

SHUTTLES/FITTINGS 62

Lifeline Terminals	64
Lifeline Shuttles	66

ROOF ACCESS 68

Ladder Access Brackets	70
Entry Access Items	72

TOOLS 74

Rivet Tools	76
Crimping Tools	78
Hydrajaws Pull Testers	80

VERTICAL LIFELINE 82

EZY-Spec Vertical Lifeline	84
----------------------------	----

SRL'S 88

Self Retracting Lifelines	90
---------------------------	----

PPE 92

Roofers Kit	94
-------------	----

‘Innovative Fall Protection’

*Energy Absorbing Anchors
keeping you safe whilst
working at heights*



Anchor Installation Handbook

ANCHOR POINT

SafetyLink's dedicated design team have been working continuously creating a multitude of new anchors to suit any working at heights scenario.

SafetyLink supply height safety equipment to all industries including industrial, commercial and domestic sites.

From a series of anchor points to a complete network of systems for maintenance, access and inspections, SafetyLink has you covered.

All SafetyLink products undergo extensive testing in a multitude of scenarios by accredited testing facilities.

SafetyLink's experienced technical team is complemented with comprehensive installation manuals and testing certificates.





Anchors

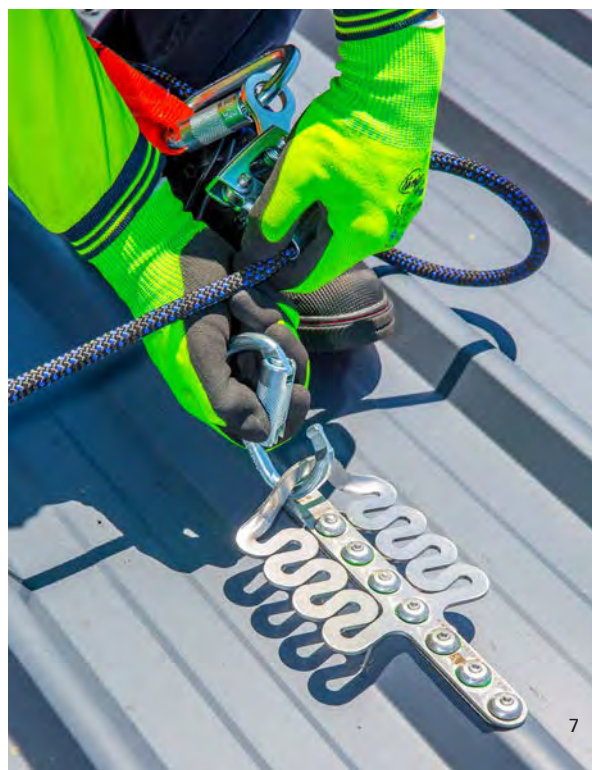
SafetyLink will provide you with the following:

- Supply a large range of anchor points that protect workers from the ground up.
- All products tested and manufactured to current Standards.
- Access to online training modules 24/7.
- Supply of installation guides and product data sheets.
- Assisted system design, layout and advice.
- Extensive technical support with collectively over 100 years of experience in the height safety industry.

Benefits of choosing SafetyLink:

SafetyLink's roof anchor point designs incorporate the same stand out feature of all our roof anchors maximising energy absorption. This dynamic design reduces the load back onto the structure and the worker attached to the roof anchor.

A fall is never an anticipated event when working at heights, therefore the direction of your fall cannot be accurately predicted. All SafetyLink roof anchors are designed and tested as multi-directional.



SURFACE MOUNTED ANCHORS



ANCHORS

SafetyLink provides a comprehensive online platform that enables you to participate in installation training, access product information and compile your certificate information in the one place.

The structure must be assessed by an engineer, unless it is clear to a competent person that the structure is adequate.



Installation Video

- This revolutionary all in one unit has been designed to attach to all metal profiles with a single row of attachment holes. This unique configuration makes it a fast simple unit for installation.
- Its low profile reflective design is a plus for many commercial or residential enterprises wanting to maintain an aesthetically pleasing facade.
- Dynamic design reduces the load back onto the structure and person attached to the anchor.

Product Code	Description	Weight (kg)
FROGL001	FrogLink Anchor	0.291
FROGL001+Rivets	FrogLink Anchor with 7 Aluminium Rivets	0.340
FROGL001+S5Z	FrogLink Unit + S5_Z Brackets	0.725
FROGL001+STROP_swaged	FrogLink Anchor, 1.2m Strop swaged, Strop Hook, Tag	0.779
FROGLINK+STROP+RIVETS_swaged	FrogLink Anchor, 1.2m Strop swaged, Strop Hook, Tag and Rivets	0.828





FrogLink Anchor with Rivets

FALL ARREST



- FrogLink is a surface mounted height safety anchor point for use on **metal roof profiles** where access to building structure is difficult.
- 360° Multi-directional, enabling full rotation around the anchor.
- Install using 7 x 8mm Rivets (Drill Size 7.8-8.2mm Aluminium).

PRODUCT CODE: FROGL001+RIVETS

Components	Description	Material	Qty
FROGL001	FrogLink Anchor	316SS	1
RIVET_8mm(27.7)	Rivet: 8mm	Aluminium	7

FrogLink Anchor with S5_Z Brackets

FALL ARREST



- FrogLink is a surface mounted height safety anchor point for use on **Kingzip standing seam roof profiles** where access to building structure is difficult.
- 360° Multi-directional, enabling full rotation around the anchor.
- Install using 2 x S5_Z Clamps, *please advise standing seam roof sheeting profile.*

PRODUCT CODE: FROGL001+S5_Z

Components	Description	Material	Qty
FROGL001	FrogLink Anchor	316SS	1
S5_Z_BRACKET	S5 Z Clamp Bracket	Alum/SS	2

FrogLink Anchor with First Man up Strop

FALL ARREST



- FrogLink anchor with swaged Strop, to be used as a first man up system.
- 360° Multi-directional, enabling full rotation around the anchor.
- Attachment end should be secured with a strop hook when not in use to ensure it can be accessed from a safe area for next use.
- Install using 7 x 8mm Rivets (Drill Size 7.8-8.2mm Aluminium).

PRODUCT CODE: FROGLINK+STROP+RIVETS_swaged

Components	Description	Material	Qty
FROGL001	FrogLink Anchor	316SS	1
STROP 1.2m_swaged	1.2m Strop	316SS/PVC	1
STROPHOOK	Spring Fender Hook	316SS	1
STROPHOOK_TAG	Strop Hook Warning Label	Plastic	1
RIVET_8mm(27.7)	Rivet: 8mm	Aluminium	7

Tools Required for Installation

GESIPA001.01	Gesipa Powerbird BT Cordless Rivet Tool (includes extra battery)	Details Page 77
GESIPA001.02	Gesipa Hand Rivet Tool (HN 2)	Details Page 77
HANDTOOL001	SafetyLink Hand Rivet Tool	Details Page 76

RAFTER MOUNTED ANCHORS



- SafetyLink's team designed the TileLink roof anchor (winner of an episode on ABC1 The New Inventors) with unique energy absorbing capabilities, to reduce the risk of injury to the person and damage to the structure.
- The TileLink is quick to install, with amazing performance ability. The unique design is practically invisible when looking at the roof.
- The TileLink fits between the existing tiles ensuring no waterproofing issues. There is no need to cut the sarking as the design of this unique roof anchor, eliminates any future potential roof leaks.

ANCHORS

SafetyLink provides a comprehensive online platform that enables you to participate in installation training, access product information and compile your certificate information in the one place.

The structure must be assessed by an engineer, unless it is clear to a competent person that the structure is adequate.



Installation Video

Product Code	Description	Weight (kg)
TILEL001	TileLink Timber Rafter Mounted Anchor	0.634
TILEL001+SCREWS	TileLink Timber Rafter Mounted Anchor + 5 Screws	0.679
TILEL001_SFM	TileLink Steel Frame Mounted Anchor	0.630
TILEL001_SFM+RIVETS	TileLink Steel Frame Mounted Anchor + 5 Aluminium Rivets	0.665



TileLink Anchor (Timber Rafters)

FALL ARREST



- TileLink anchor point designed for use on **timber rafters** with tiled roof.
- 360° Multi-directional, enabling full rotation around the anchor.
- Five fixing points with five (5) alternate fixing rows to suit multitude of tile roof profiles.
- Install using 5 x 12 gauge (50mm) roofing screws.
- Eyelet 30mm ID.

PRODUCT CODE: TILEL001+SCREWS

Components	Description	Material	Qty
TILEL001	TileLink Anchor	316SS	1
SCREW 12x50mm	12 gauge x 50mm Hex Head Screw	Coated	5

TileLink SFM Anchor (Steel Rafters)

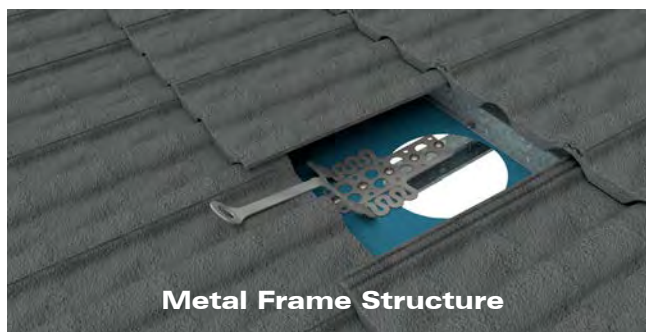
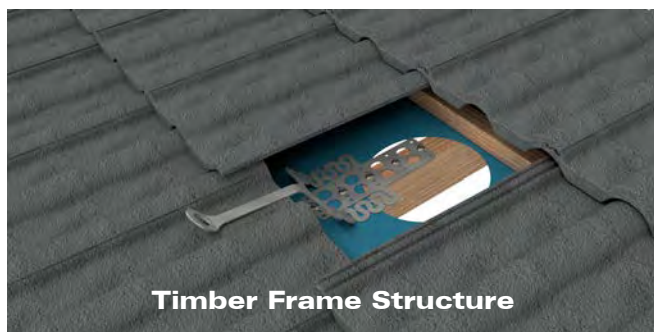
FALL ARREST



- TileLink anchor point designed for use on **steel rafters** with tiled roof.
- 360° Multi-directional, enabling full rotation around the anchor.
- Five fixing points with three (3) alternate fixing rows to suit multitude of tile roof profiles.
- Install using 5 x 8mm Rivets (Drill Size 7.8-8.2mm Aluminium).
- Eyelet 30mm ID.

PRODUCT CODE: TILEL001+RIVETS

Components	Description	Material	Qty
TILEL001_SFM	TileLink Anchor	316SS	1
RIVET_8mm(27.7)	Rivet: 8mm	Aluminium	5



Tools Required for Installation

GESIPA001.01	Gesipa Powerbird BT Cordless Rivet Tool (includes extra battery)	Details Page 77
GESIPA001.02	Gesipa Hand Rivet Tool (HN 2)	Details Page 77
HANDTOOL001	SafetyLink Hand Rivet Tool	Details Page 76

STEEL PURLIN MOUNTED ANCHORS



ANCHORS

SafetyLink provides a comprehensive online platform that enables you to participate in installation training, access product information and compile your certificate information in the one place.

The structure must be assessed by an engineer, unless it is clear to a competent person that the structure is adequate.



Installation Video

- The RetroLink anchor points are designed for use on metal roofing with steel purlin structure.
- Installation is a simple task requiring no access from underside of the roof, requiring only one 25mm hole to be drilled into the roof sheeting and through the purlin.
- Waterproofing washer combined with an o ring seals the hole, eliminating any waterproofing issues.
- Easy installation into concealed areas.

Product Code	Description	Weight (kg)
RETRO003	RetroLink Anchor with Flat Washer	0.447
RETRO004	RetroLink Anchor with Raised Washer <i>(Cannot be used for Abseiling)</i>	0.447
SWIVL001	SwiveLink Anchor with Nut	0.568





RetroLink Anchor with Flat Washer

FALL ARREST & ABSEIL



- RetroLink anchor can be installed onto a steel C or Z purlin, where no access is available from underneath the roof. Steel purlins must be a minimum 1.2mm gauge.
- Abseiling** and **Fall Arrest** anchor with an unobtrusive design that requires no special tooling and minimal penetration to the roof sheeting.
- 360° Multi-directional, enabling full rotation around the anchor.
- Drill a 25mm hole.

PRODUCT CODE: RETRO003

Components	Description	Material	Qty
EYEBOLT-RETRO	Retro Eyebolt	316SS	1
RETRO-WASHER	Retro Washer with Foam	316SS	1
RETRO-TUBE	Retro Tube with Positioning Ties	316SS	1

RetroLink Anchor with Raised Washer

FALL ARREST



- RetroLink anchor with raised washer can be installed onto a steel C or Z purlin, where no access is available from underneath the roof. Steel purlins must be a minimum 1.2mm gauge.
- SafetyLink RetroLink anchors installed to the raised section of roof sheet profiles are **NOT suitable for Rope Access/Abseiling** due to potential roof sheet distortion under live loading.
- 360° Multi-directional, enabling full rotation around the anchor.
- Drill a 25mm hole.

PRODUCT CODE: RETRO004

Components	Description	Material	Qty
EYEBOLT-RETRO	Retro Eyebolt	316SS	1
RETRO-WASHER-RAISED	Retro Raised Washer with Foam	316SS	1
RETRO-TUBE	Retro Tube with Positioning Ties	316SS	1

SwiveLink

FALL ARREST & ABSEIL



- SwiveLink anchor point is used in steel column structures.
- Non obtrusive concrete anchor designed to swivel 360 degrees.
- Built in shock absorber with the convenience of a swivelling eyebolt.
- Drill a 28mm hole

PRODUCT CODE: SWIVL001

Components	Description	Material	Qty
SWIVELINK	SwiveLink: Swiveling Unit 83mm	316SS	1
SWIVELINK NUT	SwiveLink Nut	316SS	1

STEEL MOUNTED ANCHORS



ANCHORS

SafetyLink provides a comprehensive online platform that enables you to participate in installation training, access product information and compile your certificate information in the one place.

The structure must be assessed by an engineer, unless it is clear to a competent person that the structure is adequate.

- TUFF POST is designed to raise the height of a height safety system using 300mm or 600mm tuff post's.
- TUFF POST is a sealed unit made entirely from stainless steel. Designed to be submerged into garden beds, water and other mediums.
- The Retro Eyebolt is a fall arrest rope access anchor designed to withstand a live load without activating the bending motion that occurs when arresting a fall.
- Where a low profile design is more desirable a Collared Eyebolt can be used to achieve this.



Product Code	Description	Weight (kg)
TUFF-POST300S-RET	TUFF-POST Steel Anchor Raised 300mm with Retro Eyebolt	7.319
TUFF-POST300S-COL	TUFF-POST Steel Anchor Raised 300mm with Collared Eyebolt	7.269
TUFF-POST600S-RET	TUFF-POST Steel Anchor Raised 600mm with Retro Eyebolt	16.419
TUFF-POST600S-COL	TUFF-POST Steel Anchor Raised 600mm with Collared Eyebolt	16.369



Steel Mounted TUFF-POST 300mm with Retro Eyebolt**FALL ARREST & ABSEIL**

- Tuff Post 300 system is raised 300mm off the ground. Designed to be anchored or bolted to steel.
- 360° Multi-directional, enabling full rotation around the anchor.
- Retro Eyebolt - Eyelet 28mm ID.

PRODUCT CODE: TUFF-POST300S-RET

Components	Description	Material	Qty
EYEBOLT-RETRO	Retro Eyebolt: 316 Stainless Steel	316SS	1
WASHER M20	Washer: M20 Flat Round	316SS	1
O-RING	O-Ring Washer	Rubber	1
RETRO-WASHER	Retro Stainless Steel Washer with Rubber	316SS	1
TUFF-POST300	Tuff Post 300mm	316SS	1
BOLT-M12x50mm-SS	Bolt: M12x50mm 316SS Set Screw	316SS	4
WASHER M12	Washer: M12 316 Stainless Steel	316SS	4
NUT NYLOC M12_316	Nut: M12 316 Stainless Steel	316SS	4

Steel Mounted TUFF-POST 300mm with Collared Eyebolt**FALL ARREST & ABSEIL**

- Tuff Post 300 system is raised 300mm off the ground. Designed to be anchored or bolted to steel.
- 360° Multi-directional, enabling full rotation around the anchor.
- Collared Eyebolt - Eyelet 35mm ID.

PRODUCT CODE: TUFF-POST300S-COL

Components	Description	Material	Qty
EYEBOLT M16x26mm	Collared Eyebolt: M16x26mm 316SS	316SS	1
WASHER M16_SPRING	Spring Washer: M16 316SS	316SS	1
TUFF-POST300	Tuff Post 300mm	316SS	1
BOLT-M12x50mm-SS	Bolt: M12x50mm 316SS Set Screw	316SS	4
WASHER M12	Washer: M12 316 Stainless Steel	316SS	4
NUT NYLOC M12_316	Nut: M12 316 Stainless Steel	316SS	4

Steel Mounted TUFF-POST 600mm with Retro Eyebolt**FALL ARREST & ABSEIL**

- Tuff Post 600 system is raised 600mm off the ground. Designed to be anchored or bolted to steel.
- 360° Multi-directional, enabling full rotation around the anchor.
- Retro Eyebolt - Eyelet 28mm ID.

PRODUCT CODE: TUFF-POST600S-RET

Components	Description	Material	Qty
EYEBOLT-RETRO	Retro Eyebolt: 316 Stainless Steel	316SS	1
WASHER M20	Washer: M20 Flat Round	316SS	1
O-RING	O-Ring Washer	Rubber	1
RETRO-WASHER	Retro Stainless Steel Washer with Rubber	316SS	1
TUFF-POST600	Tuff Post 600mm	316SS	1
BOLT-M12x50mm-SS	Bolt: M12x50mm 316SS Set Screw	316SS	4
WASHER M12	Washer: M12 316 Stainless Steel	316SS	4
NUT NYLOC M12_316	Nut: M12 316 Stainless Steel	316SS	4

Steel Mounted TUFF-POST 600mm with Collared Eyebolt**FALL ARREST & ABSEIL**

- Tuff Post 600 system is raised 600mm off the ground. Designed to be anchored or bolted to steel.
- 360° Multi-directional, enabling full rotation around the anchor.
- Collared Eyebolt - Eyelet 35mm ID.

PRODUCT CODE: TUFF-POST300S-COL

Components	Description	Material	Qty
EYEBOLT M16x26mm	Collared Eyebolt: M16x26mm 316SS	316SS	1
WASHER M16_SPRING	Spring Washer: M16 316SS	316SS	1
TUFF-POST600	Tuff Post 600mm	316SS	1
BOLT-M12x50mm-SS	Bolt: M12x50mm 316SS Set Screw	316SS	4
WASHER M12	Washer: M12 316 Stainless Steel	316SS	4
NUT NYLOC M12_316	Nut: M12 316 Stainless Steel	316SS	4

CONCRETE MOUNTED ANCHORS



ANCHORS

SafetyLink provides a comprehensive online platform that enables you to participate in installation training, access product information and compile your certificate information in the one place.

The structure must be assessed by an engineer, unless it is clear to a competent person that the structure is adequate.



- TUFF POST is designed to raise the height of a height safety system using 300mm or 600mm tuff post's.
- TUFF POST is a sealed unit made entirely from stainless steel. Designed to be submerged into garden beds, water and other mediums.
- The Retro Eyebolt is a fall arrest rope access anchor designed to withstand a live load without activating the bending motion that occurs when arresting a fall.
- Where a low profile design is more desirable a Collared Eyebolt can be used to achieve this.
- To comply with current Standards each concrete anchor must be tested after installation.

Product Code	Description	Weight (kg)
TUFF-POST300C-RET	TUFF-POST Concrete Anchor Raised 300mm with Retro Eyebolt	7.583
TUFF-POST300C-COL	TUFF-POST Concrete Anchor Raised 300mm with Collared Eyebolt	7.533
TUFF-POST600C-RET	TUFF-POST Concrete Anchor Raised 600mm with Retro Eyebolt	17.123
TUFF-POST600C-COL	TUFF-POST Concrete Anchor Raised 600mm with Collared Eyebolt	17.073



Concrete TUFF-POST 300mm with Retro Eyebolt**FALL ARREST & ABSEIL**

- Tuff Post 300 system is raised 300mm off the ground.
- 360° Multi-directional, enabling full rotation around the anchor.
- Chemically anchored into concrete.
- Retro Eyebolt - Eyelet 28mm ID.

PRODUCT CODE: TUFF-POST300C-RET

Components	Description	Material	Qty
EYEBOLT-RETRO	Retro Eyebolt: 316 Stainless Steel	316SS	1
WASHER M20	Washer: M20 Flat Round	316SS	1
O-RING	O-Ring Washer	Rubber	1
RETRO-WASHER	Retro Stainless Steel Washer with Rubber	316SS	1
TUFF-POST300	Tuff Post 300mm	316SS	1
CON-M12x160	Anchor Rod M12X160, M12 Spring Washer, Washer & Nut	316SS	4

Concrete TUFF-POST 300mm with Collared Eyebolt**FALL ARREST & ABSEIL**

- Tuff Post 300 system is raised 300mm off the ground.
- 360° Multi-directional, enabling full rotation around the anchor.
- Chemically anchored into concrete.
- Collared Eyebolt - Eyelet 35mm ID.

PRODUCT CODE: TUFF-POST300C-COL

Components	Description	Material	Qty
EYEBOLT M16x26mm	Collared Eyebolt: M16x26mm 316SS	316SS	1
WASHER M16_SPRING	Spring Washer: M16 316SS	316SS	1
TUFF-POST300	Tuff Post 300mm	316SS	1
CON-M12x160	Anchor Rod M12X160, M12 Spring Washer, Washer & Nut	316SS	4

Concrete TUFF-POST 600mm with Retro Eyebolt**FALL ARREST & ABSEIL**

- Tuff Post 600 system is raised 600mm off the ground.
- 360° Multi-directional, enabling full rotation around the anchor.
- Chemically anchored into concrete.
- Retro Eyebolt - Eyelet 28mm ID.

PRODUCT CODE: TUFF-POST600C-RET

Components	Description	Material	Qty
EYEBOLT-RETRO	Retro Eyebolt: 316 Stainless Steel	316SS	1
WASHER M20	Washer: M20 Flat Round	316SS	1
O-RING	O-Ring Washer	Rubber	1
RETRO-WASHER	Retro Stainless Steel Washer with Rubber	316SS	1
TUFF-POST600	Tuff Post 600mm	316SS	1
CON-M16x160	Anchor Rod M16X160, M16 Spring Washer, Washer & Nut	316SS	4

Concrete TUFF-POST 600mm with Collared Eyebolt**FALL ARREST & ABSEIL**

- Tuff Post 600 system is raised 600mm off the ground.
- 360° Multi-directional, enabling full rotation around the anchor.
- Chemically anchored into concrete.
- Collared Eyebolt - Eyelet 35mm ID.

PRODUCT CODE: TUFF-POST600C-COL

Components	Description	Material	Qty
EYEBOLT M16x26mm	Collared Eyebolt: M16x26mm 316SS	316SS	1
WASHER M16_SPRING	Spring Washer: M16 316SS	316SS	1
TUFF-POST600	Tuff Post 600mm	316SS	1
CON-M16x160	Anchor Rod M16X160, M16 Spring Washer, Washer & Nut	316SS	4

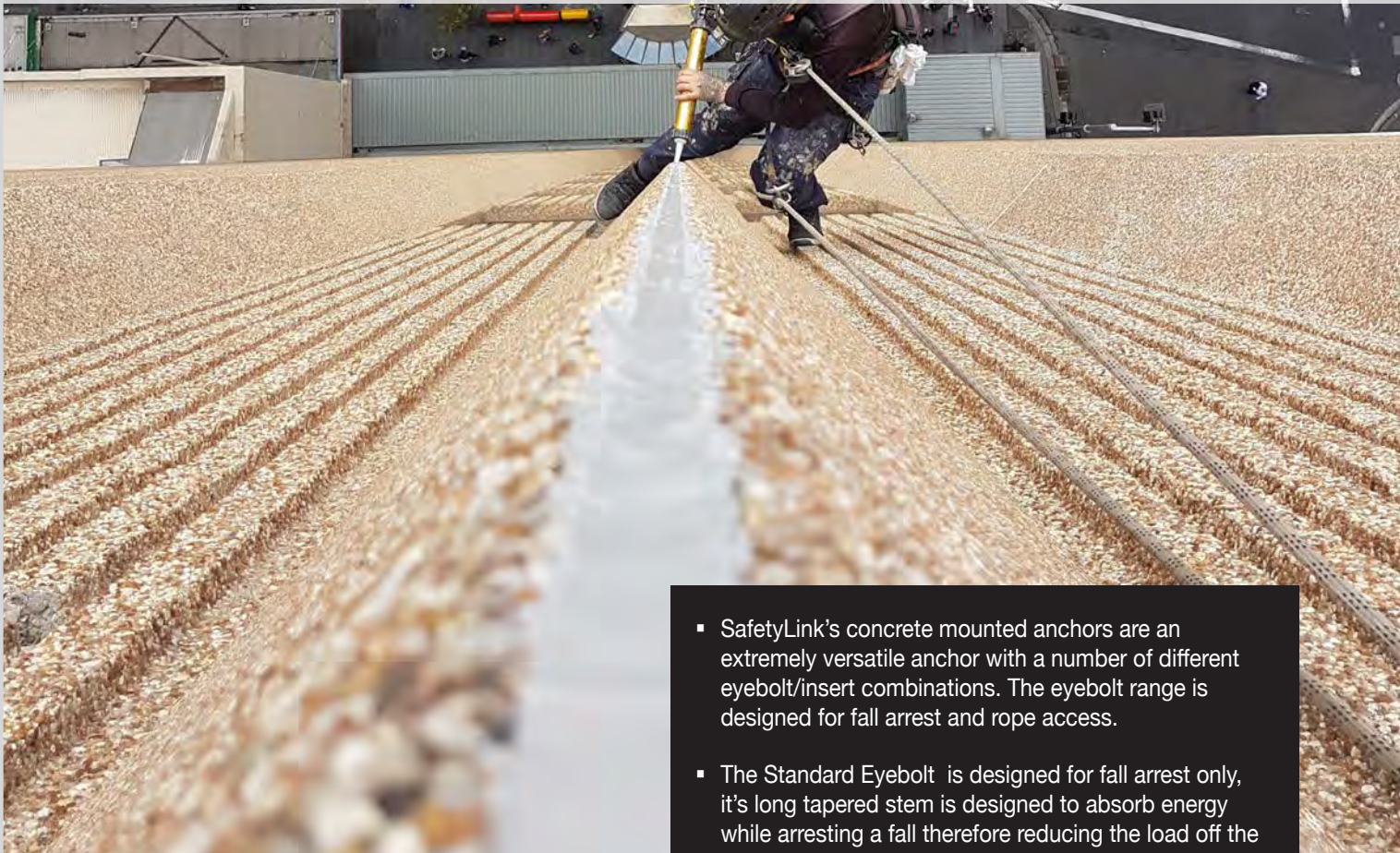
Recommended Tools for Installation

CHEMICAL ANCHOR	Recommended chemical anchor: Hilti HIT-HY200r or equivalent
TESTER001	Hydr jaws Safety Eyebolt and Ringbolt Tester Kit (0-15kN Gauge)

Hilti

Details Page 80

CONCRETE MOUNTED ANCHORS



ANCHORS

SafetyLink provides a comprehensive online platform that enables you to participate in installation training, access product information and compile your certificate information in the one place.

The structure must be assessed by an engineer, unless it is clear to a competent person that the structure is adequate.



Installation Video

- SafetyLink's concrete mounted anchors are an extremely versatile anchor with a number of different eyebolt/insert combinations. The eyebolt range is designed for fall arrest and rope access.
- The Standard Eyebolt is designed for fall arrest only, it's long tapered stem is designed to absorb energy while arresting a fall therefore reducing the load off the structure and the person in the event of a fall.
- The Abseiling Eyebolt is a fall arrest rope access anchor designed to withstand a live load without activating the bending motion that occurs when arresting a fall.
- Where a low profile design is more desirable a Collared Eyebolt can be used to achieve this.
- To comply with current Standards each concrete anchor must be tested after installation.

Product Code	Description	Weight (kg)
CONCL001 (ABSEIL)	ConcreteLink Anchor with Abseil Eyebolt	0.466
CONCL001 (STANDARD)	ConcreteLink Anchor with Standard Eyebolt	0.509
CONCL002	ConcreteLink Anchor with Collared Eyebolt	0.491
CONCL005	ConcreteLink One Piece Anchor	0.332





ConcreteLink Anchor with Abseil Eyebolt

FALL ARREST & ABSEIL



- ConcreteLink can be ordered with Standard or Abseil Eyebolt. The Standard Eyebolt is designed for fall arrest only. The Abseil Eyebolt is designed to withstand a live load without activating the bending motion that occurs when arresting a fall.
- 360° Multi-directional, enabling full rotation around the anchor.
- Chemically anchored into concrete.
- Drill a 28mm hole to a depth of 90mm.
- Eyelet 28mm ID.

PRODUCT CODE: CONCL001 (Advise Standard or Abseil Eyebolt)

Components	Description	Material	Qty
NUT M16	Nut M16	316SS	1
CON-INSERT	ConcreteLink Insert M16 90mm	316SS	1
<i>Advise if you require Standard or Abseil Eyebolt</i>			
EYEBT001	Standard Eyebolt (Bearing Length 178mm)	316SS	1
EYEBT002	Abseil Eyebolt (Bearing Length 130mm)	316SS	1

ConcreteLink Anchor with Collared Eyebolt

FALL ARREST & ABSEIL



- ConcreteLink Collared Eyebolt is a low profile anchor point designed for use in concrete, where the eyebolt can be removed if required.
- 360° Multi-directional, enabling full rotation around the anchor.
- Chemically anchored into concrete.
- Drill a 28mm hole to a depth of 90mm.
- Eyelet 35mm ID.

PRODUCT CODE: CONCL002

Components	Description	Material	Qty
EYEBOLT M16x26mm	Collared Eyebolt M16 26mm	316SS	1
CON-INSERT	ConcreteLink Insert M16 90mm	316SS	1

ConcreteLink One Piece Unit

FALL ARREST & ABSEIL



- ConcreteLink One Piece Unit is a low profile anchor point designed for use in concrete, where the eyebolt will remain in place exposed for attachment.
- 360° Multi-directional, enabling full rotation around the anchor.
- Chemically anchored into concrete.
- Drill a 18mm hole to a depth of 90mm.
- Eyelet 35mm ID.

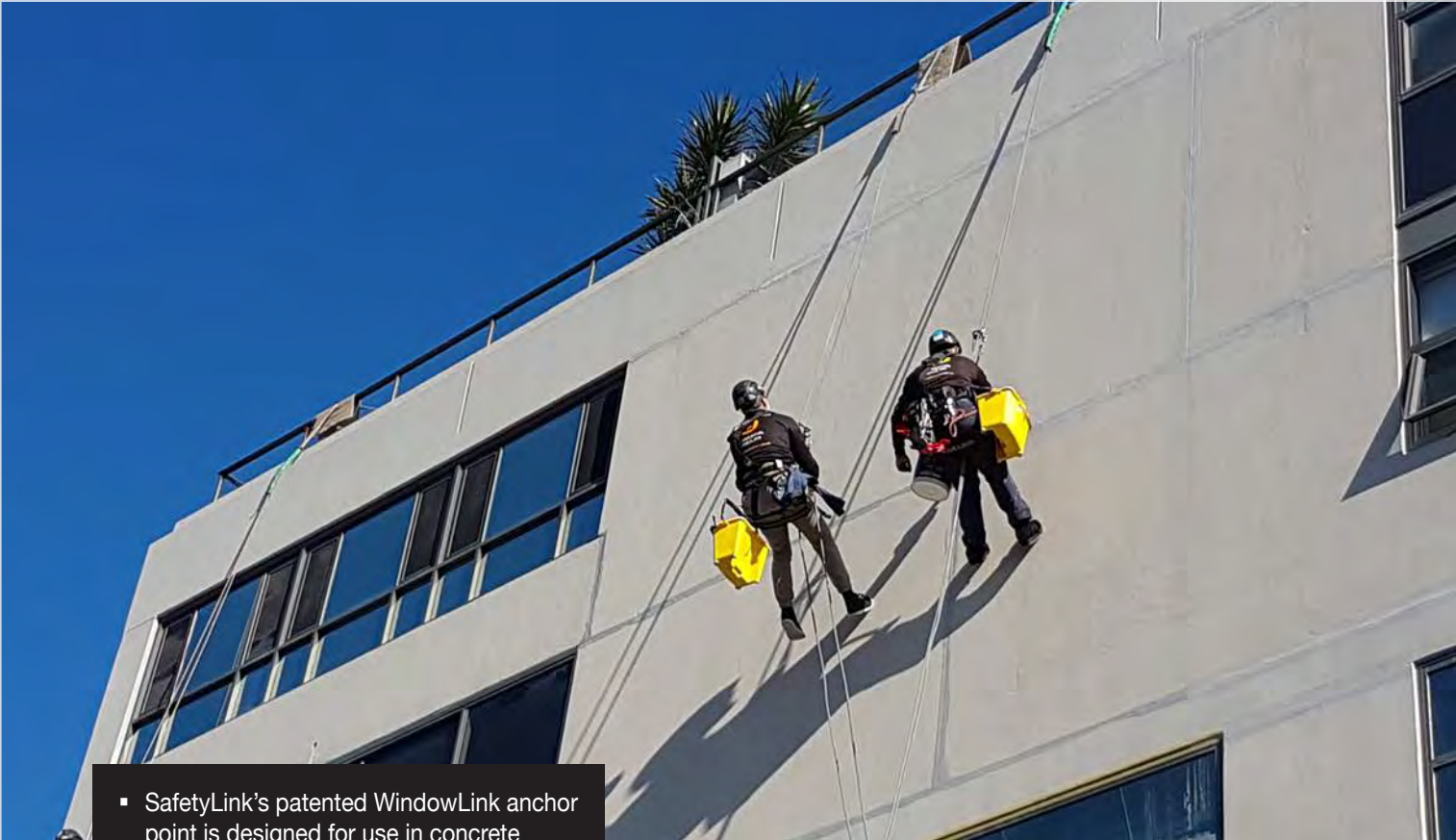
PRODUCT CODE: CONCL005

Components	Description	Material	Qty
CONCL005	One Piece Concrete Anchor	316SS	1

Recommended Tools for Installation

CHEMICAL ANCHOR	Hilti RE500 or Hilti HY200 as per Hilti Product Supplement Data sheets	Hilti
TESTER001	Hydrajaws Safety Eyebolt and Ringbolt Tester Kit (0-15kN Gauge)	Details Page 80

CONCRETE MOUNTED ANCHORS



- SafetyLink’s patented WindowLink anchor point is designed for use in concrete structures where the eyebolt will remain concealed until needed for use.
- The WindowLink can be placed outside or within the building, creating easy access for window maintenance.
- Both the WindowLink and SwiveLink are designed to swivel 360 degrees with a built in shock absorber.
- To comply with Australian Standards each concrete anchor must be tested after installation.

ANCHORS

SafetyLink provides a comprehensive online platform that enables you to participate in installation training, access product information and compile your certificate information in the one place.

The structure must be assessed by an engineer, unless it is clear to a competent person that the structure is adequate.

Product Code	Description	Weight (kg)
WINDL001	WindowLink Anchor	0.476
SWIVL002	SwiveLink Anchor	0.495
CONCL006	Concrete Brass Bolt	0.037





WindowLink

FALL ARREST & ABSEIL



- WindowLink anchor point designed for use in concrete structures where the eyebolt will remain concealed until needed for use.
- Designed to swivel 360 degrees with built in shock absorber.
- Discreet stainless steel cover.
- Chemically anchored into concrete.
- 55mm core drill to 20mm depth.
- 28mm drill to 122mm depth.
- Eyelet 28mm ID.

PRODUCT CODE: WINDL001

Components	Description	Material	Qty
WINDL001	Wall Mounted Concrete Anchor	316SS	1

SwiveLink

FALL ARREST & ABSEIL



- SwiveLink anchor point designed for use in concrete structures with the convenience of a swivelling eyebolt.
- Designed to swivel 360 degrees with built in shock absorber.
- Chemically anchored into concrete.
- Drill a 28mm hole to a depth of 90mm.
- Eyelet 28mm ID.

PRODUCT CODE: SWIVL002

Components	Description	Material	Qty
SWIVL002	SwiveLink Eyebolt Anchor	316SS	1

Concrete Brass Bolt



- Brass Bolt to be used with concrete insert when eyebolt not in use.
- Keeps internal section of insert free from debris.

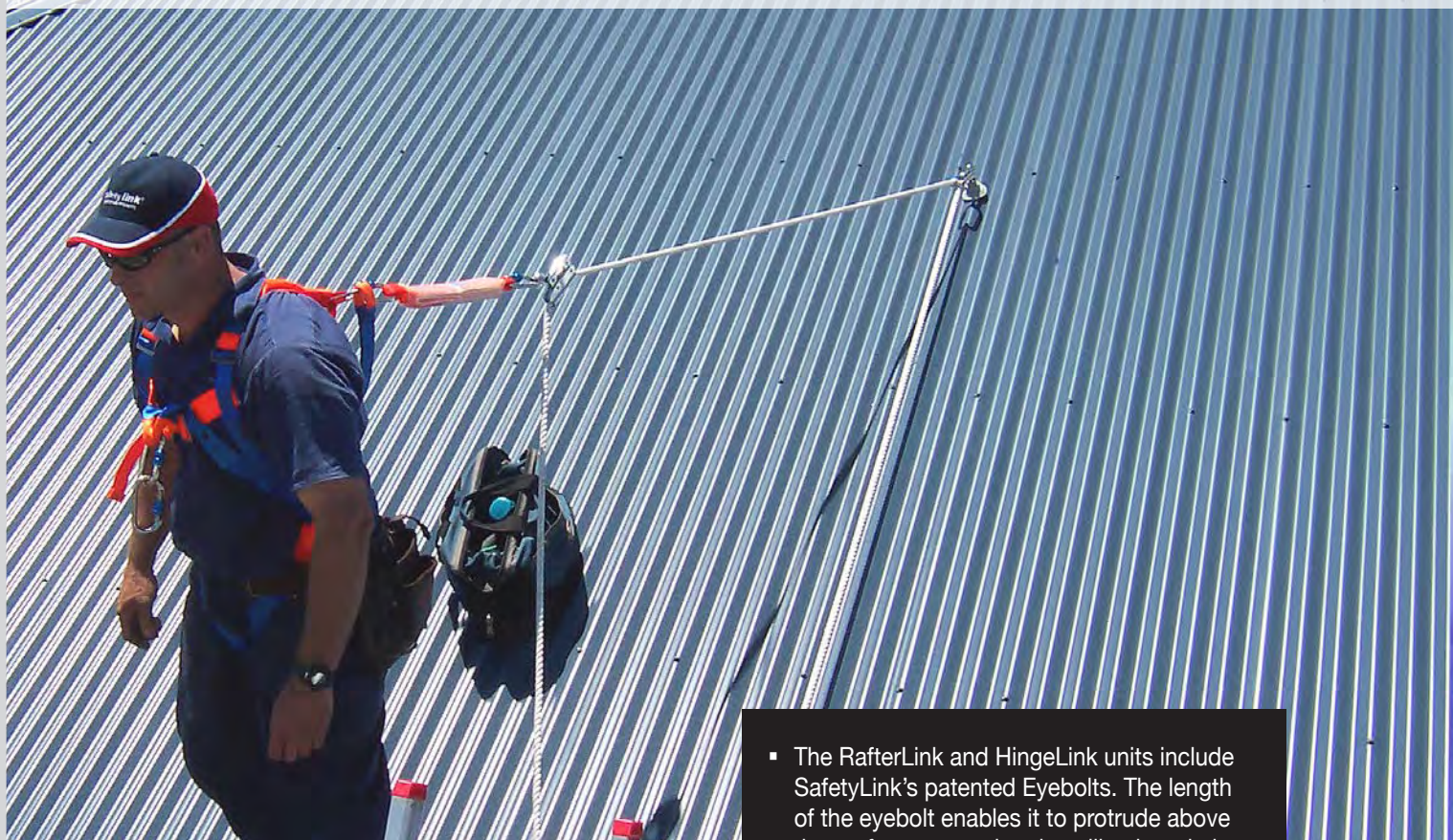
PRODUCT CODE: CONCL006

Components	Description	Material	Qty
CONCL006	Concrete Brass Bolt	Brass	1

Recommended Tools for Installation

CHEMICAL ANCHOR	Hilti RE500 or Hilti HY200 as per Hilti Product Supplement Data sheets.	Hilti
TESTER001	Hydrajaws Safety Eyebolt and Ringbolt Tester Kit (0-15kN Gauge)	Details Page 80

RAFTER MOUNTED ANCHORS



ANCHORS

SafetyLink provides a comprehensive online platform that enables you to participate in installation training, access product information and compile your certificate information in the one place.

The structure must be assessed by an engineer, unless it is clear to a competent person that the structure is adequate.

- The RafterLink and HingeLink units include SafetyLink's patented Eyebolts. The length of the eyebolt enables it to protrude above the roof structure when installing into timber structures.
- Standard Eyebolt is designed for fall arrest, it's long tapered stem is designed to absorb energy while arresting a fall therefore reducing the load off the structure and the person attached to the anchor.
- Abseil Eyebolt can be adapted to the RafterLink forming an anchor from where you can abseil, creating a safe work station for hard to get to maintenance on buildings.

Product Code	Description	Weight (kg)
RAFTR001	RafterLink Anchor with Standard Eyebolt	1.446
RAFTR001 + ABSEIL	RafterLink Anchor with Abseil Eyebolt	1.423
RAFTR004	Side Mounted RafterLink Anchor with Standard Eyebolt	1.682
RAFTR004 + ABSEIL	Side Mounted RafterLink Anchor with Abseil Eyebolt	1.659
HINGE001	HingeLink Anchor with Standard Eyebolt	1.301
HINGE001+ABSEIL	HingeLink Anchor with Abseil Eyebolt	1.258



RafterLink Anchor

FALL ARREST & ABSEIL



- RafterLink anchor point is designed for use on timber structures where there is easy access to the top of the rafter.
- Fixing required eight (8) type 17 hex head 14g x 75mm screws.
- 360° Multi-directional, will arrest a fall from any direction.
- Eyelet 28mm ID.

PRODUCT CODE: RAFTR001 (Advise Standard or Abseil Eyebolt)

Components	Description	Material	Qty
WASHER 75mm Square	75mm Rubber Hat Washer	Rubber	1
RAFTER-BASE	RafterLink Base 0 Degree Pitch	316SS	1
<i>Advise if you require Standard or Abseil Eyebolt</i>			
EYEBT001	Standard Eyebolt (Bearing Length 178mm)	316SS	1
EYEBT002	Abseil Eyebolt (Bearing Length 130mm)	316SS	1

Side Mounted RafterLink Anchor

FALL ARREST & ABSEIL



- RafterLink Side Mounted anchor point is designed for use on timber structures where there is easy access to the rafter, installs onto the side of the rafter.
- Fixings required, eight (8) type 17 Hex Head 14g x 50mm screws.
- 360° Multi-directional, will arrest a fall from any direction.
- Eyelet 28mm ID.

PRODUCT CODE: RAFTR004 (Advise Standard or Abseil Eyebolt)

Components	Description	Material	Qty
WASHER 75mm Square	75mm Rubber Hat Washer	Rubber	1
RAFTER-BASE-SIDE	RafterLink Side Mounted Base	316SS	1
<i>Advise if you require Standard or Abseil Eyebolt</i>			
EYEBT001	Standard Eyebolt (Bearing Length 178mm)	316SS	1
EYEBT002	Abseil Eyebolt (Bearing Length 130mm)	316SS	1

HingeLink Anchor

FALL ARREST & ABSEIL



- HingeLink anchor point is designed for use on metal/tiled/timber structures where there is easy access to the underside of the roof, the base of the unit is hinged enabling flexible means of attachment.
- Secure with four (4) M12 bolts and 2 Hex Head 12g 50mm screws.
- 360° Multi-directional, will arrest a fall from any direction.
- Eyelet 28mm ID.

PRODUCT CODE: HINGE001 (Advise Standard or Abseil Eyebolt)

Components	Description	Material	Qty
WASHER 75mm Square	75mm Rubber Hat Washer	Rubber	1
HINGE-BASE-SS	Hingelink Base	316SS	1
<i>Advise if you require Standard or Abseil Eyebolt</i>			
EYEBT001	Standard Eyebolt (Bearing Length 178mm)	316SS	1
EYEBT002	Abseil Eyebolt (Bearing Length 130mm)	316SS	1

SURFACE MOUNTED ANCHORS



ANCHORS

SafetyLink provides a comprehensive online platform that enables you to participate in installation training, access product information and compile your certificate information in the one place.

The structure must be assessed by an engineer, unless it is clear to a competent person that the structure is adequate.

- Classic surface mounted roof anchor is multi directional, attaching to the top of the profile on the roof sheeting for superior waterproofing.
- SafetyLink eyebolt is forged from 316 stainless steel with powerful energy absorbing qualities.
- The SafetyLink eyebolt was developed and tested extensively to maximize energy absorption while retaining its strength when arresting a fall.
- The eyebolts tapered design enables it to bend like a fishing pole to reduce the load back on the structure and the person attached to the anchor.
- Surface mounted anchors **must not** be used for rope access (abseiling).

Product Code	Description	Weight (kg)
SURFL001	Surface Mounted Anchor (2 Side Plates)	1.907
SURFL001+Rivets	Surface Mounted Anchor (2 Side Plates) with 12 Aluminium Rivets	1.991
SURFL001-BROWNBUILT	Surface Mounted Anchor (2 Side Plates Bent for Brownbuilt Roof Profile) with 12 x 34mm Rivets (yellow)	1.991
ASURF001	Surface Mounted Anchor (Aluminium Plate)	0.892
ASURF001+Rivets	Surface Mounted Anchor (Aluminium Plate) with 10 Aluminium Rivets	0.962
HSURF001	Surface Mounted Anchor (Stainless Steel Plate)	1.420
HSURF001+Rivets	Surface Mounted Anchor (Stainless Steel Plate) with 10 Aluminium Rivets	1.490





Classic SurfaceLink Anchor (Adjustable Side Plates)

FALL ARREST



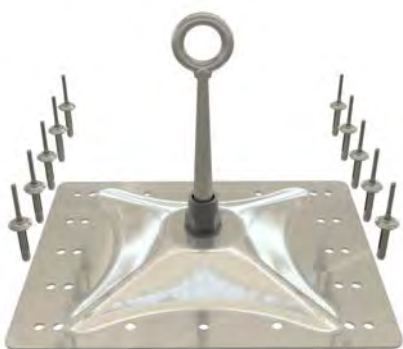
- SurfaceLink anchor point with two adjustable plates, designed for use on metal roof sheeting where access to building structure is difficult.
- Plates can be bent to suit Brownbuilt Roof Sheetting.
- 360° Multi-directional, enabling full rotation around the anchor.
- Eyelet 28mm ID.

PRODUCT CODE: SURFL001+FIXINGS

Components	Description	Material	Qty
EYEBOLT-SURFACELINK	SurfaceLink Eyebolt (Bearing Length 130mm)	316SS	1
SURF-SIDEPLATE	SurfaceLink Side Plate with foam	316SS	2
WASHER 70od-SS	Washer: 70mm OD	316SS	1
WASHER 50od-SS	Washer: 50mm OD	316SS	1
NUT M16	Nut: M16	316SS	1
RIVET_8mm(27.7)	Rivet: 8mm	Alum	12

Classic SurfaceLink Anchor (Aluminium Plate)

FALL ARREST



- SurfaceLink anchor point designed for use on metal roof sheeting where access to building structure is difficult.
- Adjustable design to suit different roof profiles.
- 360° Multi-directional, enabling full rotation around the anchor.
- Eyelet 28mm ID.

PRODUCT CODE: ASURF001+FIXINGS

Components	Description	Material	Qty
EYEBOLT-SURFACELINK	SurfaceLink Eyebolt (Bearing Length 130mm)	316SS	1
ADV-PLATE-AL-H-305	SurfaceLink Plate (precut holes)	*MGA	1
WASHER 70od-Plastic	Washer: 70mm OD	Plastic	1
WASHER 50od-SS	Washer: 50mm OD	316SS	1
NUT M16	Nut: M16	316SS	1
FOAM-TAPE	Adhesive single sided tape	Foam	2
RIVET_8mm(27.7)	Rivet: 8mm	Alum	10

Classic SurfaceLink Anchor (Stainless Steel Plate)

FALL ARREST



- SurfaceLink anchor point designed for use on metal roof sheeting where access to building structure is difficult.
- Adjustable design to suit different roof profiles.
- 360° Multi-directional, enabling full rotation around the anchor.
- Eyelet 28mm ID.

PRODUCT CODE: HSURF001+FIXINGS

Components	Description	Material	Qty
EYEBOLT-SURFACELINK	SurfaceLink Eyebolt (Bearing Length 130mm)	316SS	1
ADV-PLATE-SS-H-305	SurfaceLink Plate (precut holes)	316SS	1
WASHER 50od-SS	Washer: 50mm OD	316SS	1
NUT M16	Nut: M16	316SS	1
FOAM-TAPE	Adhesive single sided tape	Foam	2
RIVET_8mm(27.7)	Rivet: 8mm	Alum	10

Tools Required for Installation

GESIPA001.01	Gesipa Powerbird BT Cordless Rivet Tool (includes extra battery)	Details Page 77
GESIPA001.02	Gesipa Hand Rivet Tool (HN 2)	Details Page 77
HANDTOOL001	SafetyLink Hand Rivet Tool	Details Page 76

*MGA = Marine Grade Aluminium

SURFACE MOUNTED ANCHORS



ANCHORS

SafetyLink provides a comprehensive online platform that enables you to participate in installation training, access product information and compile your certificate information in the one place.

The structure must be assessed by an engineer, unless it is clear to a competent person that the structure is adequate.

- Surface mounted 360° Multi-directional, will arrest a fall from any direction.
- Install using S5 Clamp Brackets, contact SafetyLink to find the bracket to suit your roof sheeting.
- Brackets clamp to the roof profile with no penetration to the roof sheeting for superior waterproofing.

SurfaceLink S5 Bracket Anchor

FALL ARREST



- A surface mounted height safety anchor point for use on standing seam roof profiles where access to structure is difficult or roof penetrations are not permitted.
- 360° Multi-directional, enabling full rotation around the anchor.
- Eyelet 28mm ID.

PRODUCT CODE: SURFCF001+FIXINGS

Components	Description	Material	Qty
EYEBOLT-SURFACELINK	SurfaceLink Eyebolt (Bearing Length 130mm)	316SS	1
ADV-PLATE-AL-SIZE	SurfaceLink Plate (Plate Selector)	*MGA	1
WASHER 70od-Plastic	Washers: 70mm OD	Plastic	2
WASHER 50od-SS	Washers: 50mm OD	316SS	1
NUT M16	Nut: M16	316SS	1
S5_?_BRACKET	S5 Clamp (ADIVSE TYPE)	Alum/SS	4



SURFACE MOUNTED PLATE SELECTOR

Description	Photo	Material	Fixings	Weight (kg)
SURFACELINK PLATE – STANDARD (Blank) PART CODE: ADV-PLATE-AL-305 SIZE: 305mm x 243mm x 3mm ROOF PROFILE: Multitude		*MGA	Rivets or S5 Brackets	0.554
SURFACELINK PLATE – STANDARD (Precut Holes) PART CODE: ADV-PLATE-AL-305-H SIZE: 305mm x 243mm x 3mm ROOF PROFILE: Trimdek (195), Corrugated (228) and Kliplik (258), can also be used with 16 x 14 Gauge 50mm Hex Screws in 15mm Plywood		*MGA	Rivets	0.554
SURFACELINK PLATE – STANDARD (Precut Holes) PART CODE: ADV-PLATE-SS-305-H SIZE: 305mm x 243mm x 2mm ROOF PROFILE: Trimdek (195), Corrugated (228) and Kliplik (258), can also be used with 16 x 14 Gauge 50mm Hex Screws in 15mm Plywood		316SS	Rivets	1.083
SURFACELINK PLATE – 370 (Blank) PART CODE: ADV-PLATE-AL-370 SIZE: 370mm x 243mm x 3mm ROOF PROFILE: Multitude		*MGA	Rivets or S5 Brackets	0.710
SURFACELINK PLATE – 370 (Holes) PART CODE: ADV-PLATE-AL-370-H-318 SIZE: 370mm x 243mm x 3mm (Holes at 318mm) ROOF PROFILE: Multitude		*MGA	Rivets	0.710
SURFACELINK PLATE – 370 (Holes) PART CODE: ADV-PLATE-AL-370-H-333 SIZE: 370mm x 243mm x 3mm (Holes at 333mm) ROOF PROFILE: Multitude		*MGA	Rivets	0.710
SURFACELINK PLATE – 450 (Blank) PART CODE: ADV-PLATE-AL-450 SIZE: 450mm x 243mm x 3mm (option 4x Holes at 400mm profile-Non Stock Items) ROOF PROFILE: Standing Seam		*MGA	Rivets or S5 Brackets	1.117
SURFACELINK PLATE – 550 (Blank) PART CODE: ADV-PLATE-AL-550 SIZE: 550mm x 243mm x 3mm (option holes at 300mm-400mm-500mm-Non Stock Item) ROOF PROFILE: Standing Seam		*MGA	S5 Brackets	1.365
SURFACELINK PLATE – 650 (Blank) PART CODE: ADV-PLATE-AL-650 SIZE: 650mm x 243mm x 3mm (option holes at 300mm-400mm-500mm-Non Stock Item) ROOF PROFILE: Standing Seam		*MGA	S5 Brackets	1.365
SURFACELINK PLATE - 295 PART CODE: ADV-PLATE-SS-295SQ SIZE: 295mm x 295mm Square ROOF PROFILE: Membrane		316SS	Toggles	0.900
SURFACELINK SIDE PLATES (Precut Holes) PART CODE: SURF-SIDEPLATE ROOF PROFILE: Multitude Can be bent to suit Brownbuilt PC: SURF-SIDEPLATE-BB		316SS	Rivets	0.749

*MGA = Marine Grade Aluminium

EYEBOLTS & EYENUTS



ANCHORS

The structure must be assessed by an engineer, unless it is clear to a competent person that the structure is adequate.

SafetyLink provides a comprehensive online platform that enables you to participate in installation training, access product information and compile your certificate information in the one place.

Eyehook

FALL ARREST & ABSEIL



- Single person anchor.
- Rated at 15kN.
- Complies with EN795.

Product Code	Description	Material	Qty
EYEHOOK M12	Eyehook: ID12mm (no thread)	316SS	1
EYEHOOK M16	Eyehook: ID16mm (no thread)	316SS	1





- The Standard Eyebolt is designed for fall arrest only.
- Available to attach to a multitude of different mounting systems.
- 360° Multi-directional.
- Single person anchor, rated at 15kN.
- Thread M16.
- Eyelet 28mm ID.

PRODUCT CODE: EYEBY001

Components	Description	Material	Qty
EYEBT001	Standard Eyebolt (Bearing Length 178mm)	316SS	1

Abseil Eyebolt

FALL ARREST & ABSEIL



- The Abseil Eyebolt is designed to withstand a live load without activating the bending motion that occurs when arresting a fall.
- Available to attach to a multitude of different mounting systems (not to be used with surface mounted anchor).
- 360° Multi-directional.
- Single person anchor, rated at 15kN.
- Thread M16.
- Eyelet 28mm ID.

PRODUCT CODE: EYEBT002

Components	Description	Material	Qty
EYEBT002	Abseil Eyebolt (Bearing Length 130mm)	316SS	1

Collared Eyebolt

FALL ARREST & ABSEIL



- The Collared Eyebolt is a low profile anchor point.
- 360° Multi-directional.
- Single person anchor, rated at 15kN.
- Thread M16
- Eyelet 35mm ID.

PRODUCT CODE: EYEBOLT M16x26mm

Components	Description	Material	Qty
EYEBOLT M16x26mm	Collared Eyebolt M16 26mm	316SS	1

Eyenut M16

FALL ARREST & ABSEIL



- Available to attach to a multitude of different mounting systems.
- Single person anchor, rated at 15kN.
- Internal Thread M16.
- Eyelet 35mm ID.

PRODUCT CODE: EYENUT M16

Components	Description	Material	Qty
EYENUT M16	Eyenut: Collared Female 16ID	316SS	1

TEMPORARY ANCHOR



ANCHORS

SafetyLink provides a comprehensive online platform that enables you to participate in installation training, access product information and compile your certificate information in the one place.

The structure must be assessed by an engineer, unless it is clear to a competent person that the structure is adequate.

- SafetyLink's temporary roof anchor the TempLink 3000 has been designed for use where an anchor is required for a temporary period of time in a location that does not need to be revisited.
- TempLink 3000 is a patented multi-directional fall device designed to absorb energy when a fall is arrested.
- The TempLink 3000 is an extremely useful item for any person wishing to do roof maintenance where there is no permanent safety anchors.
- The design incorporates the same stand out features of all our height safety anchors maximising energy absorption, reducing the load back onto the structure and the person attached to the anchor.

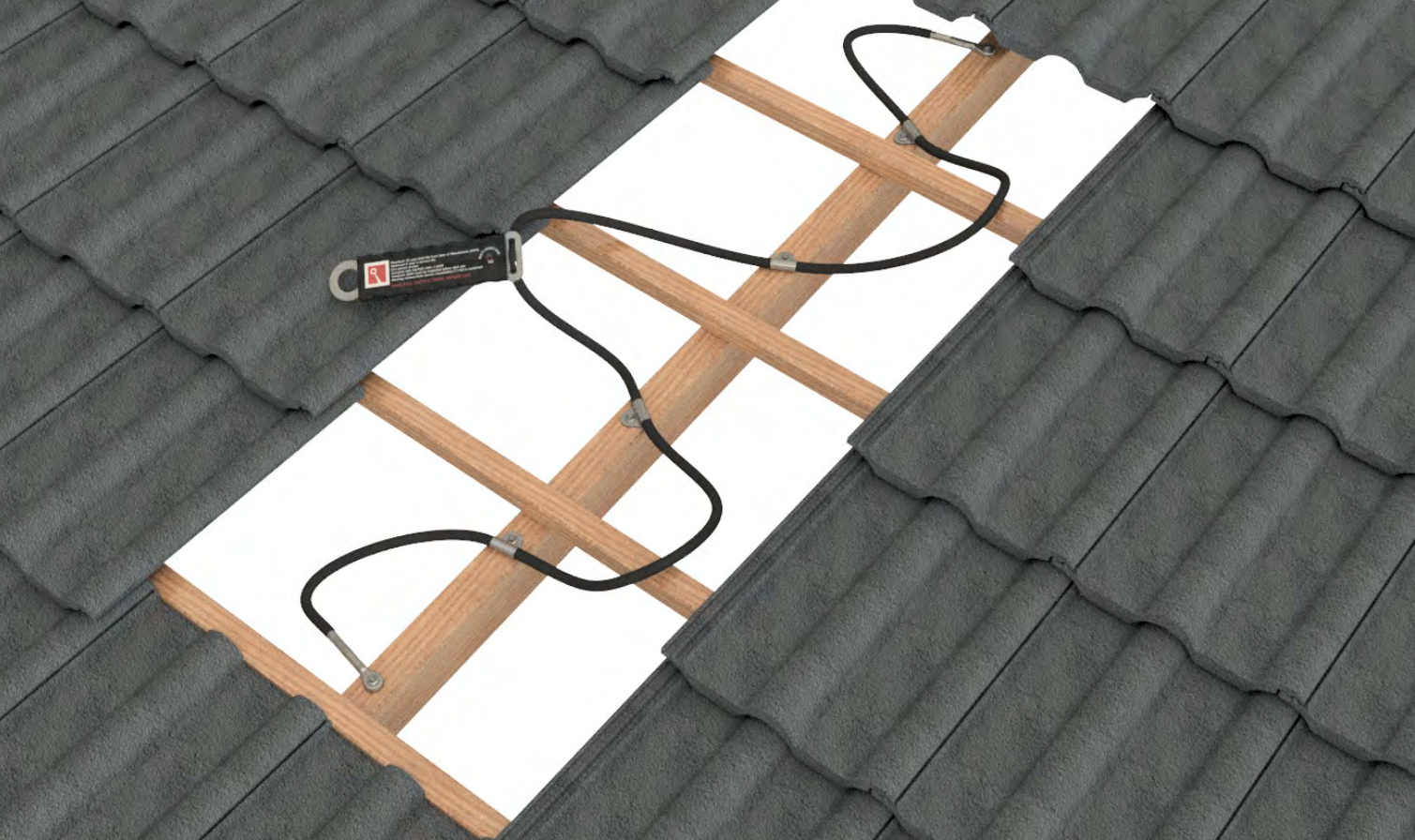


Installation Video
on Metal Roof



Installation Video
on Tile Roof





TempLink 3000

FALL ARREST

- Lightweight compact unit, enabling easy manoeuvring to desired location.
- The TempLink can be installed directly on **timber rafters** or through **metal roof sheeting** to battens.
- Secure with six (6) 14g 75mm roofing screws.
- 360° Multi-directional, enabling full rotation around the anchor.
- One person anchor.
- Easy to secure with adjustable stainless steel mounting tabs.
- UV coated cable.
- Protective rubberised sleeve preventing damage to roof materials.
- Handy carry bag with installation instructions.
- Eyelet 33.8mm ID.

Product Code	Description	Material	Qty	Weight (kg)
TEMPL003	TempLink 3000 - Temporary Anchor	316SS	1	1.019



‘Innovative Fall Protection’

SafetyLink's horizontal lifeline systems make traversing along our lifelines simple and easy, eliminating the need to disconnect from the line, our intermediate and corners are designed so our innovative shuttles can glide freely.



FROGLINE VIDEO



LIFELINES

The FrogLine lifelines low profile design combines effortless energy absorbing capabilities into every end, intermediate and corner anchor, consequently incorporating the line energy absorbers into the system. This inventive approach ensures our FrogLine lifeline systems are always installed with the maximum energy absorption possible regardless of the horizontal line length.

- Patented low profile design.
- Fast simplified installation.
- Advanced shock absorbing serpentine.
- Innovative built in fall indicators.
- Solid 316 stainless steel components.
- Quick connect shuttle.
- Smooth continuous transition over intermediates.

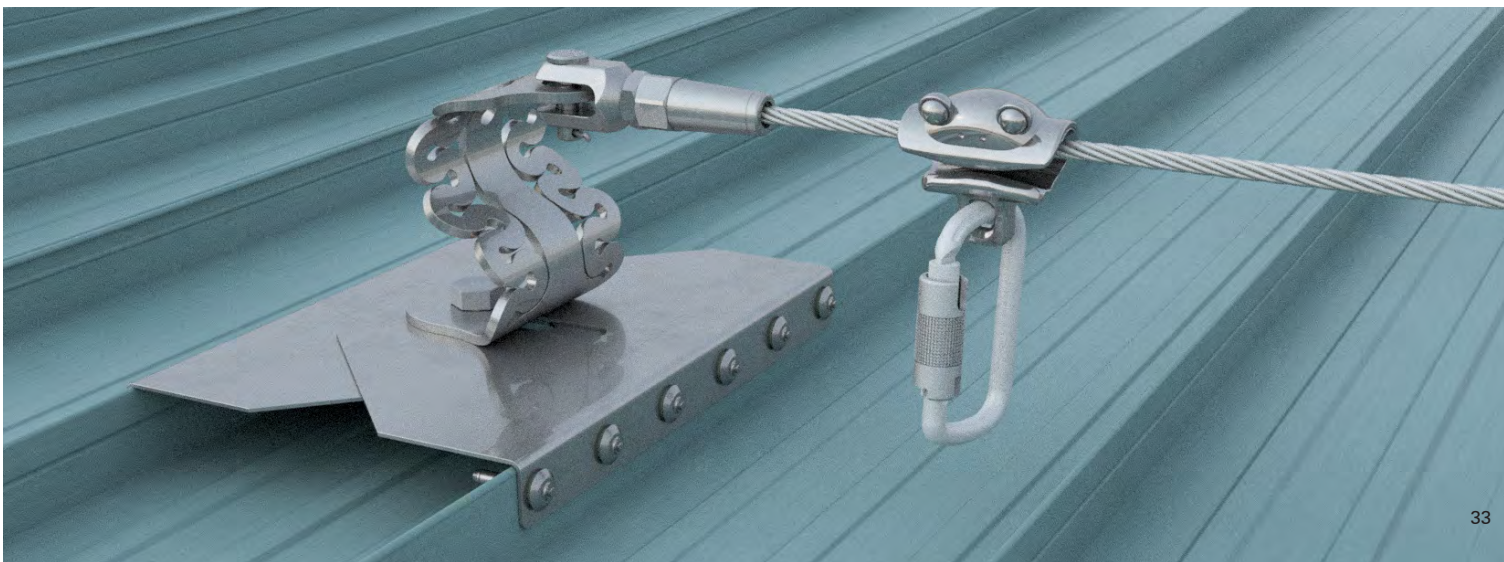
**SafetyLink will provide you with the following:**

- Supply a large range of anchors points that protect workers from the ground up.
- All products tested and manufactured to current Standards.
- Access to online training modules 24/7.
- Supply of installation guides and product data sheets.
- Assisted system design, layout and advice.
- Extensive technical support with collectively over 100 years of experience in the height safety industry.

Benefits of choosing SafetyLink:

Innovation and attention to detail is always foremost in our minds when designing new products. The FrogLine lifeline demonstrates this with its intricate tab features. These tabs provide stability whilst the line is in tension, in addition to this they act as a fall indicator when removed from their initial position.

The FrogLine curved profile, while smart in its simplicity provides the initial shock absorbing capabilities in the event of a fall. Further extension is provided in the serpentine shapes which progressively dissipate and absorb the energy whilst retaining their strength. This duality of function is why the FrogLine design surpasses all its competitors in the field.



SURFACE MOUNTED FROGLINE



LIFELINES

Installation of any SafetyLink Lifeline Systems requires face to face training for manufacturer's accreditation.

The structure must be assessed by an engineer, unless it is clear to a competent person that the structure is adequate.

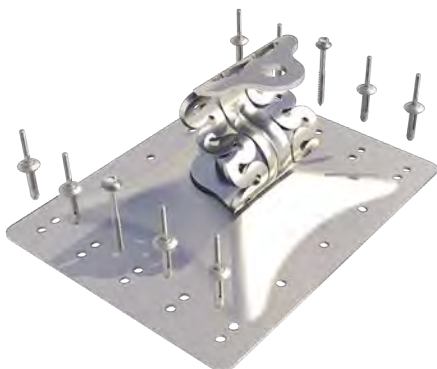
- Permanent horizontal height safety lifeline system, designed to be mounted onto various metal profile roof sheeting.
- Suits pitches no greater than 25 degrees.
- Fitted where it is difficult to access the underside of the roof. Equipped with an engineered energy absorbing region to minimise loads on users and structures in the event of a fall.
- Continuous connection with 8mm stainless steel cable, utilising the FrogLine Shuttle System, up-to four users per system, two per span.

Product Code	Description	Weight (kg)
STAT.FROGSAL001	Surface Mounted Intermediate Anchor	1.453
STAT.FROGSAL001+Fixings	Surface Mounted Intermediate Anchor + Fixings	1.553
STAT.FROGSAL002	Surface Mounted End Anchor	1.457
STAT.FROGSAL002+Fixings	Surface Mounted End Anchor + Fixings	1.557
STAT.FROGSAL003	Surface Mounted Corner Anchor	1.606
STAT.FROGSAL003+Fixings	Surface Mounted Corner Anchor + Fixings	1.706
<i>To order Surface Mounted Lifeline with Stainless Steel Plates use below product codes</i>		
STAT.FROGSUR001	Surface Mounted Intermediate Anchor	1.980
STAT.FROGSUR001+Fixings	Surface Mounted Intermediate Anchor + Fixings	2.080
STAT.FROGSUR002	Surface Mounted End Anchor	1.984
STAT.FROGSUR002+Fixings	Surface Mounted End Anchor + Fixings	2.084
STAT.FROGSUR003	Surface Mounted Corner Anchor	2.133
STAT.FROGSUR003+Fixings	Surface Mounted Corner Anchor + Fixings	2.233





Surface Mounted END Anchor

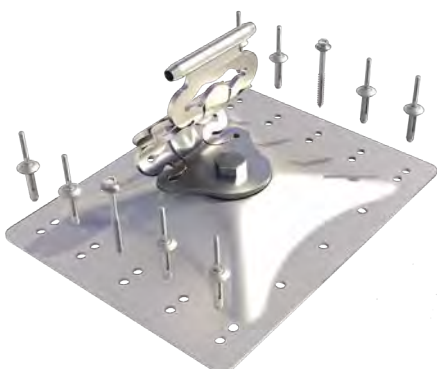


End anchor designed to be mounted on the surface of a metal roof profile as attachment points for the cable to start and terminate at.

PRODUCT CODE: STAT.FROGSAL002+FIXINGS

Components	Description	Material	Qty
FROGLINE END	FrogLine Base End	316 SS	1
BOLT-M16x35mm-SS	Bolt: M16 x 35mm Set Screw	316 SS	1
ADV-PLATE-AL-H-305	SurfaceLink Plate 305mm (precut holes)	*MGA	1
WASHER 70od-Plastic	Washer: 70mm OD	Plastic	2
WASHER 70od-SS	Washer: 70mm OD	316 SS	1
NUT M16	Nut: M16	316 SS	1
FOAM-TAPE 29cm	Barrier Foam Tape	Foam	2
SCREW 14.10x75mm	14-10x75mm Hex Head Screws	Coated	2
RIVET_8mm(27.7)	Rivet: 8mm	Alum	10

Surface Mounted INTERMEDIATE Anchor

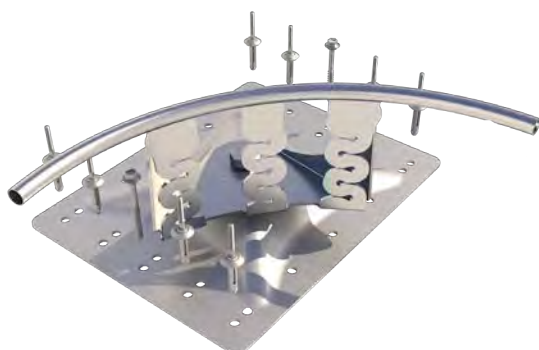


Intermediate anchor designed to be mounted on the surface of a metal roof profile to limit lifeline span distances.

PRODUCT CODE: STAT.FROGSAL001+FIXINGS

Components	Description	Material	Qty
FROGLINE INT	FrogLine Base Intermediate	316 SS	1
BOLT-M16x35mm-SS	Bolt: M16 x 35mm Set Screw	316 SS	1
ADV-PLATE-AL-H-305	SurfaceLink Plate 305mm (precut holes)	*MGA	1
WASHER 70od-Plastic	Washer: 70mm OD	Plastic	2
WASHER 70od-SS	Washer: 70mm OD	316 SS	1
NUT M16	Nut: M16	316 SS	1
FOAM-TAPE 29cm	Barrier Foam Tape	Foam	2
SCREW 14.10x75mm	14-10x75mm Hex Head Screws	Coated	2
RIVET_8mm(27.7)	Rivet: 8mm	Alum	10

Surface Mounted CORNER Anchor



Corner anchor designed to be mounted on the surface of a metal roof profile. The lifeline cable runs through the corner anchor point re-directing it by up to 90 degrees.

PRODUCT CODE: STAT.FROGSAL003+FIXINGS

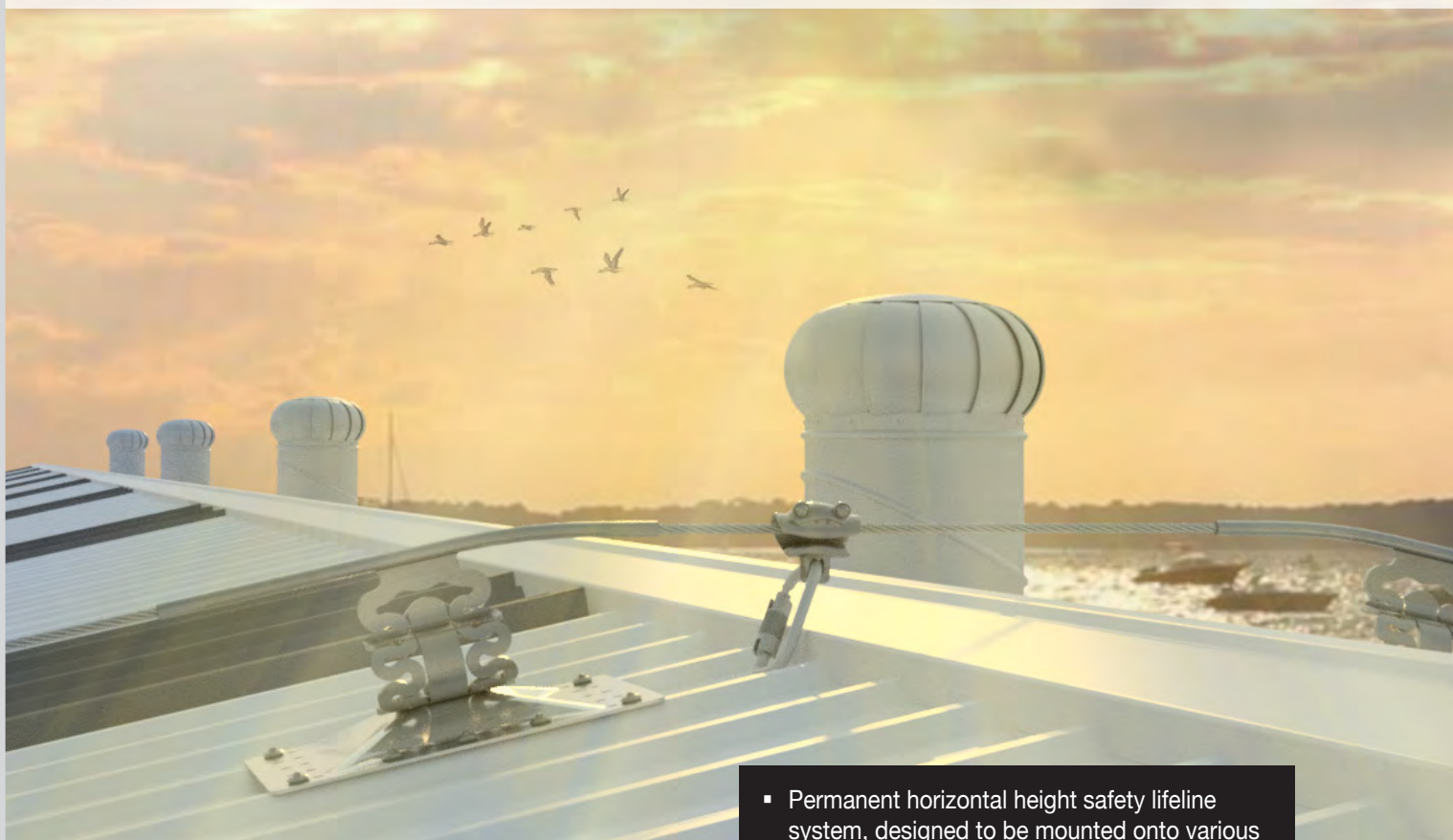
Components	Description	Material	Qty
FROGLINE CNR	FrogLine Base Corner	316 SS	1
BOLT-M16x35mm-SS	Bolt: M16 x 35mm Set Screw	316 SS	1
ADV-PLATE-AL-H-305	SurfaceLink Plate 305mm (precut holes)	*MGA	1
WASHER 70od-Plastic	Washer: 70mm OD	Plastic	2
WASHER 70od-SS	Washer: 70mm OD	316 SS	1
NUT M16	Nut: M16	316 SS	1
FOAM-TAPE 29cm	Barrier Foam Tape	Foam	2
SCREW 14.10x75mm	14-10x75mm Hex Head Screws	Coated	2
RIVET_8mm(27.7)	Rivet: 8mm	Alum	10

Accessories Required for Complete Lifeline

1	Tensioner with Tension Indicator (Swaged/Swageless/Crimped)	Details Page 65
1	Termination (Swaged/Swageless/Crimped)	Details Page 65
Per Metre	Cable: 8mm diameter, 7x7 wire rope, 316 Stainless Steel	Details Page 64
1	FrogLine Shuttle with Karabiner	Details Page 67

*MGA = Marine Grade Aluminium

SURFACE MOUNTED FROGLINE



LIFELINES

Installation of any SafetyLink Lifeline Systems requires face to face training for manufacturer's accreditation.

The structure must be assessed by an engineer, unless it is clear to a competent person that the structure is adequate.

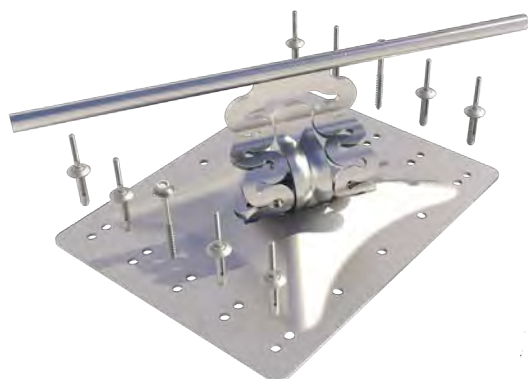
- Permanent horizontal height safety lifeline system, designed to be mounted onto various metal profile roof sheeting.
- Suits pitches no greater than 25 degrees.
- Fitted where it is difficult to access the underside of the roof. Equipped with an engineered energy absorbing region to minimise loads on users and structures in the event of a fall.
- Continuous connection with 8mm stainless steel cable, utilising the FrogLine Shuttle System, up-to four users per system, two per span.

Product Code	Description	Weight (kg)
STAT.FROGSAL008	Surface Mounted Intermediate EXTENDED Anchor (Aluminium Plate)	1.536
STAT.FROGSUR008	Surface Mounted Intermediate EXTENDED Anchor (316 Stainless Steel Plate)	2.115
STAT.FROGSUR004	Fixings for Surface Mounted Plate Installation	0.100





Surface Mounted INTERMEDIATE EXTENDED Anchor (Aluminium Plate)



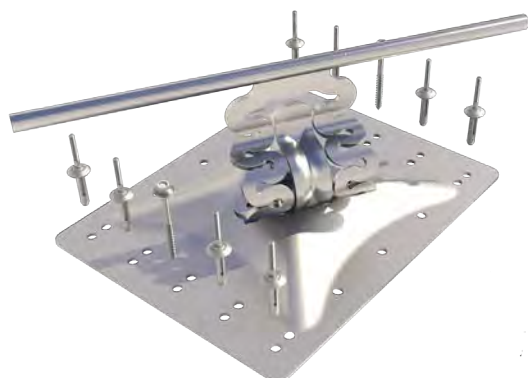
Intermediate anchor designed to be mounted on the surface of a metal roof profile as part of a horizontal lifeline system, to limit lifeline span distances.

Longer tube to enable bending to suit small degree changes in the line.

PRODUCT CODE: STAT.FROGSAL008

Components	Description	Material	Qty
FROGLINE INT_EXT	FrogLine Base Int EXTENDED	316 SS	1
BOLT-M16x35mm-SS	Bolt: M16 x 35mm Set Screw	316 SS	1
ADV-PLATE-AL-H-305	SurfaceLink Plate 305mm (precut holes)	*MGA	1
WASHER 70od-Plastic	Washer: 70mm OD	Plastic	2
WASHER 70od-SS	Washer: 70mm OD	316 SS	1
NUT M16	Nut: M16	316 SS	1
FOAM-TAPE 29cm	Barrier Foam Tape	Foam	2

Surface Mounted INTERMEDIATE EXTENDED Anchor (Stainless Plate)



Intermediate anchor designed to be mounted on the surface of a metal roof profile as part of a horizontal lifeline system, to limit lifeline span distances.

Longer tube to enable bending to suit small degree changes in the line.

PRODUCT CODE: STAT.FROGSUR008

Components	Description	Material	Qty
FROGLINE INT_EXT	FrogLine Base Int EXTENDED	316 SS	1
BOLT-M16x35mm-SS	Bolt: M16 x 35mm Set Screw	316 SS	1
ADV-PLATE-SS-H-305	SurfaceLink Plate 305mm (precut holes)	316 SS	1
WASHER 70od-SS	Washer: 70mm OD	316 SS	1
NUT M16	Nut: M16	316 SS	1
FOAM-TAPE 29cm	Barrier Foam Tape	Foam	2

Fixings



Fixings required to install surface mounted plate to roof sheeting.

PRODUCT CODE: STAT.FROGSUR004

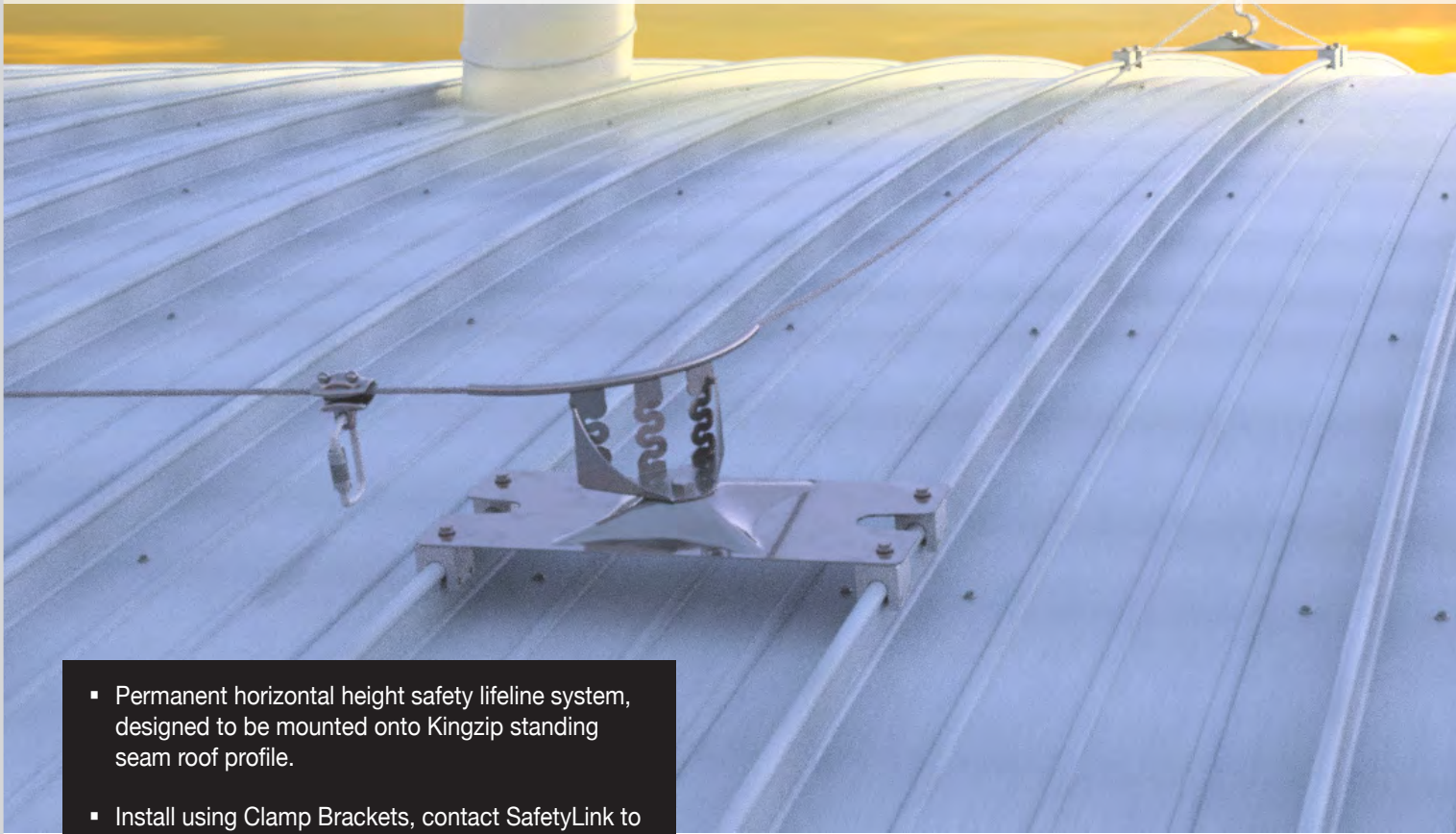
Components	Description	Material	Qty
SCREW 14.10x75mm	14-10x75mm Hex Head Screws	Coated	2
RIVET_8mm(27.7)	Rivet: 8mm	Alum	10

Accessories Required for Complete Lifeline

1	Tensioner with Tension Indicator (Swaged/Swageless/Crimped)	Details Page 65
1	Termination (Swaged/Swageless/Crimped)	Details Page 65
Per Metre	Cable: 8mm diameter, 7x7 wire rope, 316 Stainless Steel	Details Page 64
1	FrogLine Shuttle with Karabiner	Details Page 67

*MGA = Marine Grade Aluminium

STANDING SEAM KINGZIP MOUNTED FROGLINE



- Permanent horizontal height safety lifeline system, designed to be mounted onto Kingzip standing seam roof profile.
- Install using Clamp Brackets, contact SafetyLink to find the bracket to suit your roof sheeting.
- Brackets clamp to the roof profile with no penetration to the roof sheeting for superior waterproofing.
- Suits pitches no greater than 25 degrees.
- Fitted where it is difficult to access the underside of the roof. Equipped with an engineered energy absorbing region to minimise loads on users and structures in the event of a fall.
- Continuous connection with 8mm stainless steel cable, utilising the FrogLine Shuttle System, up-to four users per system, two per span.

LIFELINES

Installation of any SafetyLink Lifeline Systems requires face to face training for manufacturer's accreditation.

The structure must be assessed by an engineer, unless it is clear to a competent person that the structure is adequate.

Product Code	Description	Weight (kg)
STAT.FROGKSCF001+FIXINGS	FrogLine AL SurfaceLink Intermediate Anchor+FIXINGS	3.122
STAT.FROGKSCF002+FIXINGS	FrogLine AL SurfaceLink End Anchor+FIXINGS	3.126
STAT.FROGKSCF003+FIXINGS	FrogLine AL SurfaceLink Corner Anchor+FIXINGS	3.275



Surface Mounted END Anchor (Clamp Brackets-advise profile)

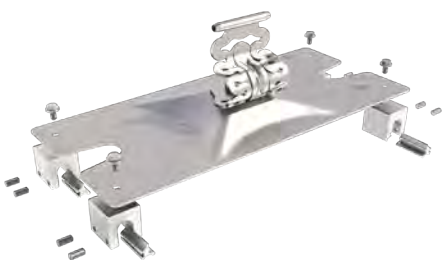


Permanent horizontal lifeline system as attachment points for the cable to start and terminate at on Standing Seam Roof Profile.

PRODUCT CODE: STAT.FROGKSCF002+FIXINGS

Components	Description	Material	Qty
FROGLINE END	FrogLine Base End	316SS	1
BOLT-M16x35mm-SS	Bolt: M16x35mm Set Screw	316SS	1
WASHER 70od-Plastic	Washer: 70mm OD	Plastic	2
ADV-PLATE-AL-SIZE	SurfaceLink Plate (Plate Selector)	*MGA	1
WASHER 70od-SS	Washer: 70mm O.D.	316SS	1
NUT M16	Nut: M16	316SS	1
S5_?_BRACKET	S5_? Clamp (advise roof profile)	Alum/SS	4

Surface Mounted INTERMEDIATE Anchor (Clamp Brackets-advise profile)

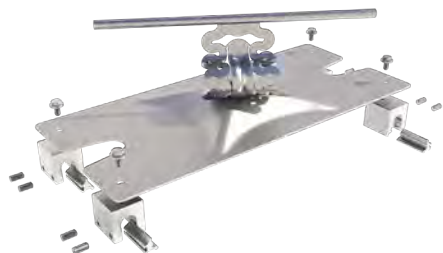


Permanent horizontal lifeline system to limit lifeline span distances on Standing Seam Roof Profile.

PRODUCT CODE: STAT.FROGKSCF001+FIXINGS

Components	Description	Material	Qty
FROGLINE INT	FrogLine Base Intermediate	316SS	1
BOLT-M16x35mm-SS	Bolt: M16x35mm Set Screw	316SS	1
WASHER 70od-Plastic	Washer: 70mm OD	Plastic	2
ADV-PLATE-AL-SIZE	SurfaceLink Plate (Plate Selector)	*MGA	1
WASHER 70od-SS	Washer: 70mm OD	316SS	1
NUT M16	Nut: M16	316SS	1
S5_?_BRACKET	S5_? Clamp (advise roof profile)	Alum/SS	4

Surface Mounted INTERMEDIATE EXTENDED Anchor (Clamp Brackets-advise profile)

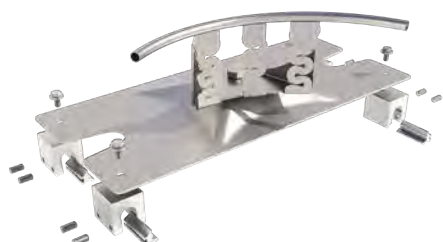


Permanent horizontal lifeline system to limit lifeline span distances on Standing Seam Roof Profile.

PRODUCT CODE: STAT.FROGKSCF008+FIXINGS

Components	Description	Material	Qty
FROGLINE INT_EXT	FrogLine Base Intermediate EXTENDED	316SS	1
BOLT-M16x35mm-SS	Bolt: M16x35mm Set Screw	316SS	1
WASHER 70od-Plastic	Washer: 70mm OD	Plastic	2
ADV-PLATE-AL-SIZE	SurfaceLink Plate (Plate Selector)	*MGA	1
WASHER 70od-SS	Washer: 70mm OD	316SS	1
NUT M16	Nut: M16	316SS	1
S5_?_BRACKET	S5_? Clamp (advise roof profile)	Alum/SS	4

Surface Mounted CORNER Anchor (Clamp Brackets-advise profile)



The lifeline cable runs through the corner anchor point re-directing it by up to 90 degrees on Standing Seam Roof Profile.

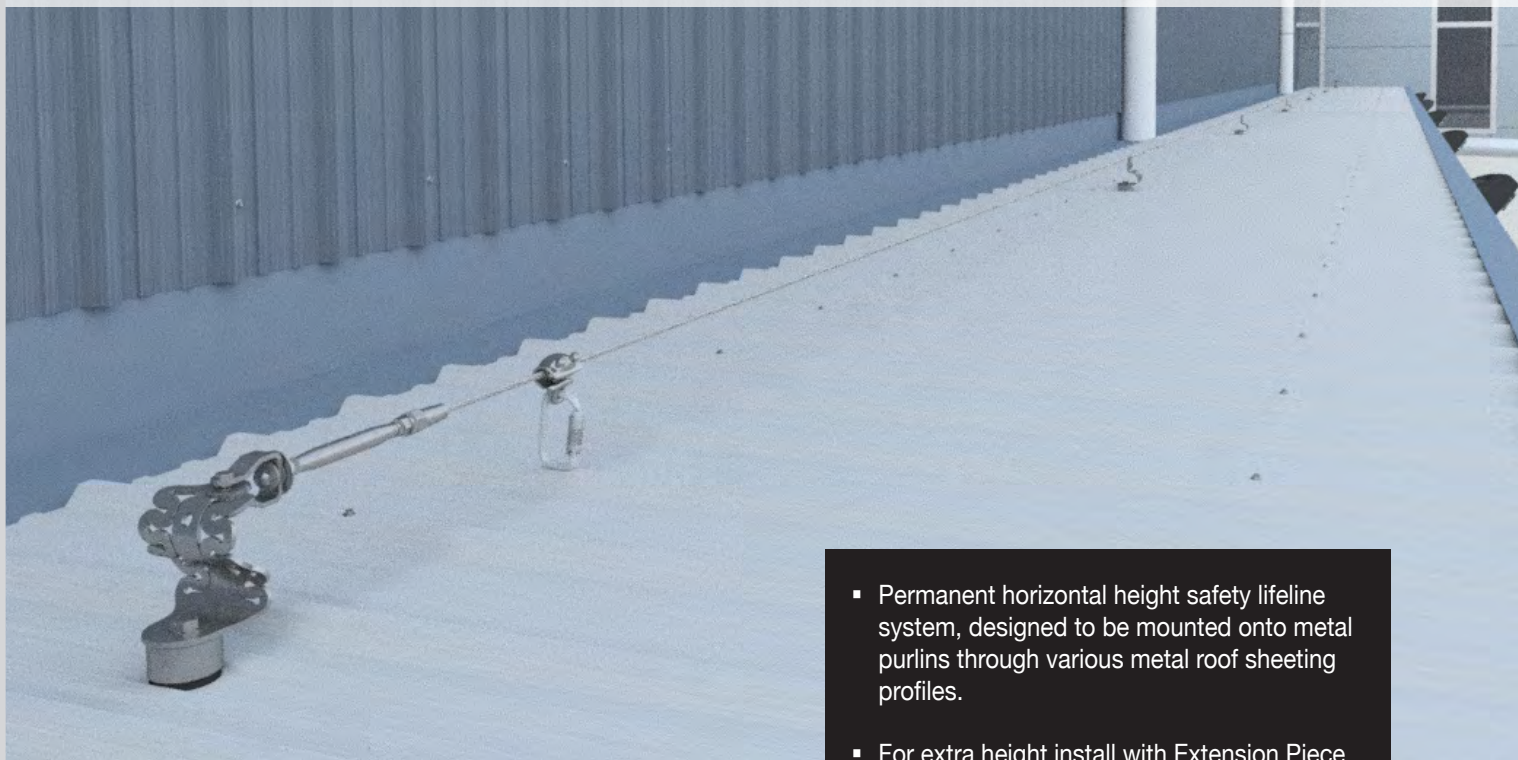
PRODUCT CODE: STAT.FROGKSCF003+FIXINGS

Components	Description	Material	Qty
FROGLINE CNR	FrogLine Base Corner	316SS	1
BOLT-M16x35mm-SS	Bolt: M16x35mm Set Screw	316SS	1
WASHER 70od-Plastic	Washer: 70mm OD	Plastic	2
ADV-PLATE-AL-SIZE	SurfaceLink Plate (Plate Selector)	*MGA	1
WASHER 70od-SS	Washer: 70mm OD	316SS	1
NUT M16	Nut: M16	316SS	1
S5_?_BRACKET	S5_? Clamp (advise roof profile)	Alum/SS	4

Accessories Required for Complete Lifeline

1	Tensioner with Tension Indicator (Swaged/Swageless/Crimped)	Details Page 65
1	Termination (Swaged/Swageless/Crimped)	Details Page 65
Per Metre	Cable: 8mm diameter, 7x7 wire rope, 316 Stainless Steel	Details Page 64
1	FrogLine Shuttle with Karabiner	Details Page 67

PURLIN MOUNTED RETRO FROGLINE



LIFELINES

Installation of any SafetyLink Lifeline Systems requires face to face training for manufacturer's accreditation.

The structure must be assessed by an engineer, unless it is clear to a competent person that the structure is adequate.

EXTENSION

Extension pieces can be ordered separately with below codes.

35mm STAT.FROGRET001.01

55mm STAT.FROGRET001.02

90mm STAT.FROGRET001.03

- Permanent horizontal height safety lifeline system, designed to be mounted onto metal purlins through various metal roof sheeting profiles.
- For extra height install with Extension Piece.
- Suits pitches no greater than 25 degrees on a multitude of roof profiles.
- Equipped with an engineered energy absorbing region to minimise loads on users and structures in the event of a fall.
- Continuous connection with 8mm stainless steel cable, utilising the FrogLine Shuttle System, up-to four users per system, two per span.

Product Code	Description	Weight (kg)
STAT.FROGRET001	Lifeline RetroLink Intermediate Anchor	0.981
STAT.FROGRET002	Lifeline RetroLink End Anchor	0.985
STAT.FROGRET003	Lifeline RetroLink Corner Anchor	1.134
STAT.FROGRET008	Lifeline RetroLink Intermediate Extended Anchor	1.116
<i>Extensions are used when extra height is required - lengths available 35mm, 55mm and 90mm</i>		
STAT.FROGRET001_EXT	Lifeline RetroLink Intermediate Anchor with 35mm Extension	1.794
STAT.FROGRET002_EXT	Lifeline RetroLink End Anchor with 35mm Extension	1.798
STAT.FROGRET003_EXT	Lifeline RetroLink Corner Anchor with 35mm Extension	1.947
STAT.FROGRET008_EXT	Lifeline RetroLink Intermediate Extended Anchor with 35mm Extension	1.929



Retro END Anchor



End anchor designed to be mounted into metal purlin construction with various metal roof profiles as attachment points for the cable to start and terminate at.

- Drill a 25mm hole.

PRODUCT CODE: STAT.FROGRET002

Components	Description	Material	Qty
FROGLINE END	FrogLine Base End	316SS	1
BOLT-M16x90mm-SS	Bolt: M16 90mm Set Screw	316SS	1
O-RING	O-Ring	Rubber	1
WASHER M20	Washer: M20	316SS	1
WASHER 700D-Foam	Foam Washer: 700D	Foam	1
RETRO-TUBE	Retro Tube with Tie	316SS	1

Retro INTERMEDIATE Anchor



Intermediate anchor designed to be mounted into metal purlin construction with various metal roof profiles, to limit lifeline span distances.

- Drill a 25mm hole.

PRODUCT CODE: STAT.FROGRET001

Components	Description	Material	Qty
FROGLINE INT	FrogLine Base Intermediate	316SS	1
BOLT-M16x90mm-SS	Bolt: M16 90mm Set Screw	316SS	1
O-RING	O-Ring	Rubber	1
WASHER M20	Washer: M20	316SS	1
WASHER 700D-Foam	Foam Washer: 700D	Foam	1
RETRO-TUBE	Retro Tube with Tie	316SS	1

Retro EXTENDED INTERMEDIATE Anchor



Intermediate anchor designed to be mounted into metal purlin construction with various metal roof profiles, to limit lifeline span distances.

Longer tube to enable bending to suit small degree changes in the line.

PRODUCT CODE: STAT.FROGRET008

Components	Description	Material	Qty
FROGLINE INT_EXT	FrogLine Base Intermediate Extended	316SS	1
BOLT-M16x90mm-SS	Bolt: M16 90mm Set Screw	316SS	1
O-RING	O-Ring	Rubber	1
WASHER M20	Washer: M20	316SS	1
WASHER 700D-Foam	Foam Washer: 700D	Foam	1
RETRO-TUBE	Retro Tube with Tie	316SS	1

Retro CORNER Anchor



Corner anchor designed to be mounted into metal purlin construction with various metal roof profiles. The lifeline cable runs through the corner anchor point re-directing it by up to 90 degrees.

- Drill a 25mm hole.

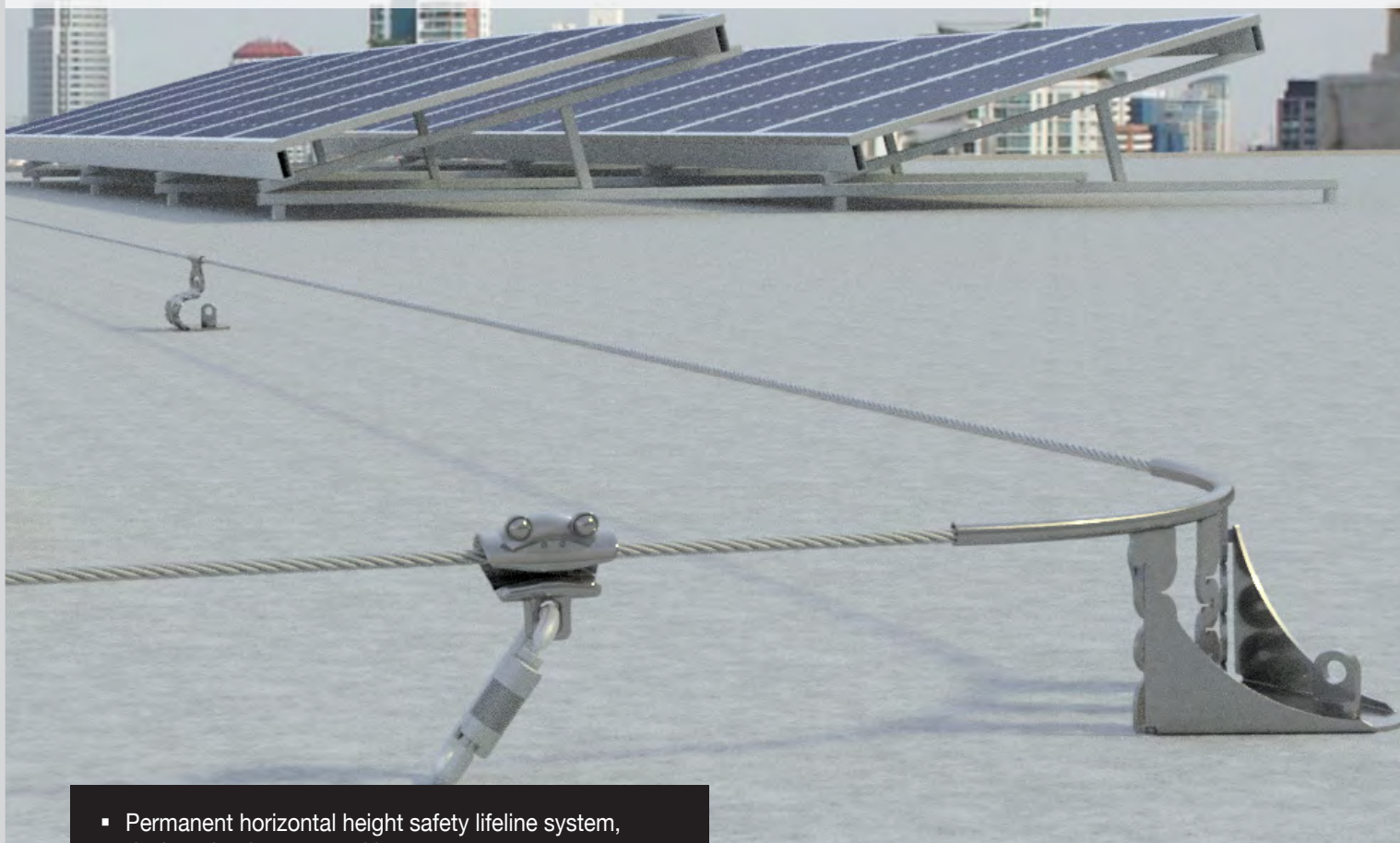
PRODUCT CODE: STAT.FROGRET003

Components	Description	Material	Qty
FROGLINE CNR	FrogLine Base Corner	316SS	1
BOLT-M16x90mm-SS	Bolt: M16 90mm Set Screw	316SS	1
O-RING	O-Ring	Rubber	1
WASHER M20	Washer: M20	316SS	1
WASHER 700D-Foam	Foam Washer: 700D	Foam	1
RETRO-TUBE	Retro Tube with Tie	316SS	1

Accessories Required for Complete Lifeline

1	Tensioner with Tension Indicator (Swaged/Swageless/Crimped)	Details Page 65
1	Termination (Swaged/Swageless/Crimped)	Details Page 65
Per Metre	Cable: 8mm diameter, 7x7 wire rope, 316 Stainless Steel	Details Page 64
1	FrogLine Shuttle with Karabiner	Details Page 67

CONCRETE MOUNTED FROGLINE



- Permanent horizontal height safety lifeline system, designed to be mounted into concrete structure.
- Concrete Insert must be chemically fastened.
- FrogLine Bolts installed as part of the FrogLine Concrete Lifeline allows easy proof load testing to be completed without the need to remove any components from the system.
- Equipped with an engineered energy absorbing region to minimise loads on users and structures in the event of a fall.
- Continuous connection with 8mm stainless steel cable, utilising the FrogLine Shuttle System, up-to four users per system, two per span.

LIFELINES

Installation of any SafetyLink Lifeline Systems requires face to face training for manufacturer's accreditation.

The structure must be assessed by an engineer, unless it is clear to a competent person that the structure is adequate.

Product Code	Description	Weight (kg)
STAT.FROGCON001	Lifeline Concrete Intermediate Anchor	1.019
STAT.FROGCON002	Lifeline Concrete End Anchor	1.023
STAT.FROGCON003	Lifeline Concrete Corner Anchor	1.172
STAT.FROGCON008	Lifeline Concrete Intermediate Extended Anchor	1.154



Concrete Mounted END Anchor



End anchor designed to be mounted into a concrete structure as attachment points for the cable to start and terminate at.

- Chemically anchored into concrete.
- Drill a 28mm hole to a depth of 90mm.

PRODUCT CODE: STAT.FROGCON002

Components	Description	Material	Qty
FROGLINE END	FrogLine Base End	316SS	1
FROGLINE BOLT	FrogLine Eyebolt M16 35mm	316SS	1
CON-INSERT	ConcreteLink Insert M16 90mm	316SS	1

Concrete Mounted INTERMEDIATE Anchor



Intermediate anchor designed to limit lifeline span distances.

- Chemically anchored into concrete.
- Drill a 28mm hole to a depth of 90mm.

PRODUCT CODE: STAT.FROGCON001

Components	Description	Material	Qty
FROGLINE INT	FrogLine Base Intermediate	316SS	1
FROGLINE BOLT	FrogLine Eyebolt M16 35mm	316SS	1
CON-INSERT	ConcreteLink Insert M16 90mm	316SS	1

Concrete Mounted EXTENDED INTERMEDIATE Anchor



Intermediate anchor designed to limit lifeline span distances. Longer tube to enable bending to suit small degree changes in the line.

- Chemically anchored into concrete.
- Drill a 28mm hole to a depth of 90mm.

PRODUCT CODE: STAT.FROGCON008

Components	Description	Material	Qty
FROGLINE INT_EXT	FrogLine Base Intermediate Extended	316SS	1
FROGLINE BOLT	FrogLine Eyebolt M16 35mm	316SS	1
CON-INSERT	ConcreteLink Insert M16 90mm	316SS	1

Concrete Mounted CORNER Anchor



Corner anchor designed to re-direct cable by up to 90 degrees.

- Chemically anchored into concrete.
- Drill a 28mm hole to a depth of 90mm.

PRODUCT CODE: STAT.FROGCON003

Components	Description	Material	Qty
FROGLINE CNR	FrogLine Base Corner	316SS	1
FROGLINE BOLT	FrogLine Eyebolt M16 35mm	316SS	1
CON-INSERT	ConcreteLink Insert M16 90mm	316SS	1

Accessories Required for Complete Lifeline

1	Tensioner with Tension Indicator (Swaged/Swageless/Crimped)	Details Page 65
1	Termination (Swaged/Swageless/Crimped)	Details Page 65
Per Metre	Cable: 8mm diameter, 7x7 wire rope, 316 Stainless Steel	Details Page 64
1	FrogLine Shuttle with Karabiner	Details Page 67

DONUTLINK CONCRETE MOUNTED FROGLINE



- Permanent horizontal height safety lifeline system, designed to be mounted into concrete structure.
- Concrete Rod must be chemically fastened.
- DonutLink washer installed as part of the Frogline concrete lifeline allows full testing to be completed without the need of additional effort or removing any components from the system.
- Equipped with an engineered energy absorbing region to minimise loads on users and structures in the event of a fall.
- Continuous connection with 8mm stainless steel cable, utilising the FrogLine Shuttle System, up-to four users per system, two per span.

DonutLink: M16 316SS Adapter to be used with Hydrajaws Tester to pull test DonutLink Washer on Concrete FrogLine Lifeline.



Product Code	Description	Weight (kg)
STAT.FROGCAR001	Lifeline DonutLink Concrete Intermediate Anchor	0.961
STAT.FROGCAR002	Lifeline DonutLink Concrete End Anchor	0.965
STAT.FROGCAR003	Lifeline DonutLink Concrete Corner Anchor	1.114
STAT.FROGCAR008	Lifeline DonutLink Concrete Intermediate Extended Anchor	1.096
DONUTLINK-ADP	DonutLink: M16 316SS Adapter	



DonutLink Concrete Mounted END Anchor



End anchor designed to be mounted into a concrete structure as attachment points for the cable to start and terminate at.

- Drill a 18mm hole to a minimum of 90mm embedment into structure concrete.
- Chemically anchored into concrete.

PRODUCT CODE: STAT.FROGCAR002

Components	Description	Material	Qty
FROGLINE END	FrogLine Base End	316SS	1
WASHER M16_SPRING	Washer: M16 Spring	316SS	1
WASHER M16_DONUT	Washer: M16 DonutLink	316SS	1
ROD M16X130MM	Anchor Rod: M16x130mm (45 deg cut)	316SS	1
NUT M16	Nut: M16	316SS	1

DonutLink Concrete Mounted INTERMEDIATE Anchor



Intermediate anchor designed to limit lifeline span distances.

- Drill a 18mm hole to a minimum of 90mm embedment into structure concrete.
- Chemically anchored into concrete.

PRODUCT CODE: STAT.FROGCAR001

Components	Description	Material	Qty
FROGLINE INT	FrogLine Base Intermediate	316SS	1
WASHER M16_SPRING	Washer: M16 Spring	316SS	1
WASHER M16_DONUT	Washer: M16 DonutLink	316SS	1
ROD M16X130MM	Anchor Rod: M16x130mm (45 deg cut)	316SS	1
NUT M16	Nut: M16	316SS	1

DonutLink Concrete Mounted EXTENDED INTERMEDIATE Anchor



Intermediate anchor designed to limit lifeline span distances. Longer tube to enable bending to suit small degree changes in the line.

- Drill a 18mm hole to a minimum of 90mm embedment into structure concrete.
- Chemically anchored into concrete.

PRODUCT CODE: STAT.FROGCAR008

Components	Description	Material	Qty
FROGLINE INT_EXT	FrogLine Base Intermediate Extended	316SS	1
WASHER M16_SPRING	Washer: M16 Spring	316SS	1
WASHER M16_DONUT	Washer: M16 DonutLink	316SS	1
ROD M16X130MM	Anchor Rod: M16x130mm (45 deg cut)	316SS	1
NUT M16	Nut: M16	316SS	1

DonutLink Concrete Mounted CORNER Anchor



Corner anchor designed to re-direct cable by up to 90 degrees.

- Drill a 18mm hole to a minimum of 90mm embedment into structure concrete.
- Chemically anchored into concrete.

PRODUCT CODE: STAT.FROGCAR003

Components	Description	Material	Qty
FROGLINE CNR	FrogLine Base Corner	316SS	1
WASHER M16_SPRING	Washer: M16 Spring	316SS	1
WASHER M16_DONUT	Washer: M16 DonutLink	316SS	1
ROD M16X130MM	Anchor Rod: M16x130mm (45 deg cut)	316SS	1
NUT M16	Nut: M16	316SS	1

Accessories Required for Complete Lifeline

1	Tensioner with Tension Indicator (Swaged/Swageless/Crimped)	Details Page 65
1	Termination (Swaged/Swageless/Crimped)	Details Page 65
Per Metre	Cable: 8mm diameter, 7x7 wire rope, 316 Stainless Steel	Details Page 64
1	FrogLine Shuttle with Karabiner	Details Page 67

CONCRETE MOUNTED FROGLINE



- TUFF POST is designed to raise the height of a height safety system using either a 300mm or 600mm Tuff Post.
- TUFF POST is a sealed unit made entirely from stainless steel. Designed to be submerged into garden beds, water and other mediums.
- Must be chemically fastened.
- The TUFF POST when installed with a lifeline is used with SafetyLink's energy absorbing FrogLine Lifeline. The FrogLine Lifeline has advanced shock absorbing serpentine designed into each anchor with innovative built-in fall indicators. Therefore reducing the load off the structure and the person in the event of a fall.
- Continuous connection with 8mm stainless steel cable, utilising the FrogLine Shuttle System, up-to four users per system, two per span.

LIFELINES

Installation of any SafetyLink Lifeline Systems requires face to face training for manufacturer's accreditation.

The structure must be assessed by an engineer, unless it is clear to a competent person that the structure is adequate.



- ** Advise if require 600mm TUFF POST with M16x160mm Anchor Rod
- ** Recommended chemical anchor: Hilti HIT-HY200r or equivalent

Product Code	Description	Weight (kg)
STAT.FROGTUFF002C-300mm	Lifeline TUFF-POST Concrete End Anchor -300mm	8.035
STAT.FROGTUFF001C-300mm	Lifeline TUFF-POST Concrete Intermediate Anchor -300mm	8.031
STAT.FROGTUFF008C-300mm	Lifeline TUFF-POST Concrete Intermediate Extended Anchor -300mm	8.184
STAT.FROGTUFF003C-300mm	Lifeline TUFF-POST Concrete Corner Anchor -300mm	8.166
STAT.FROGTUFF002C-600mm	Lifeline TUFF-POST Concrete End Anchor -600mm	17.575
STAT.FROGTUFF001C-600mm	Lifeline TUFF-POST Concrete Intermediate Anchor -600mm	17.571
STAT.FROGTUFF008C-600mm	Lifeline TUFF-POST Concrete Intermediate Extended Anchor -600mm	17.724
STAT.FROGTUFF003C-600mm	Lifeline TUFF-POST Concrete Corner Anchor -600mm	17.706





Concrete Mounted END Anchor - Raised 300mm**



End anchor designed to be mounted into a concrete structure as attachment points for the cable to start and terminate at.

- Chemically anchored into concrete with Anchor Rod M12X160.

PRODUCT CODE: STAT.FROGTUFF002C

Components	Description	Material	Qty
FROGLINE END	FrogLine Base End	316SS	1
FROGLINE BOLT	FrogLine Eyebolt: M16x35mm	316SS	1
WASHER M20	Washer: 20mm	316SS	1
O-RING	O-Ring Washer	Rubber	1
TUFF-POST300	Tuff Post 300mm	316SS	1
CON-HILTI-M12x160	Anchor Rod HIT-V-R M12X160	316SS	4

Concrete Mounted INTERMEDIATE Anchor - Raised 300mm**



Intermediate anchor designed to limit lifeline span distances.

- Chemically anchored into concrete with Anchor Rod M12X160.

PRODUCT CODE: STAT.FROGTUFF001C

Components	Description	Material	Qty
FROGLINE INT	FrogLine Base Intermediate	316SS	1
FROGLINE BOLT	FrogLine Eyebolt: M16x35mm	316SS	1
WASHER M20	Washer: 20mm	316SS	1
O-RING	O-Ring Washer	Rubber	1
TUFF-POST300	Tuff Post 300mm	316SS	1
CON-HILTI-M12x160	Anchor Rod HIT-V-R M12X160	316SS	4

Concrete Mounted EXTENDED INTERMEDIATE Anchor - Raised 300mm**



Intermediate anchor designed to limit lifeline span distances. Longer tube to enable bending to suit small degree changes in the line.

- Chemically anchored into concrete with Anchor Rod M12X160.

PRODUCT CODE: STAT.FROGTUFF008C

Components	Description	Material	Qty
FROGLINE INT_EXT	FrogLine Base Intermediate Extended	316SS	1
FROGLINE BOLT	FrogLine Eyebolt: M16x35mm	316SS	1
WASHER M20	Washer: 20mm	316SS	1
O-RING	O-Ring Washer	Rubber	1
TUFF-POST300	Tuff Post 300mm	316SS	1
CON-HILTI-M12x160	Anchor Rod HIT-V-R M12X160	316SS	4

Concrete Mounted CORNER Anchor - Raised 300mm**



Corner anchor designed to re-direct cable by up to 90 degrees.

- Chemically anchored into concrete with Anchor Rod M12X160.

PRODUCT CODE: STAT.FROGTUFF003C

Components	Description	Material	Qty
FROGLINE CNR	FrogLine Base Corner	316SS	1
FROGLINE BOLT	FrogLine Eyebolt: M16x35mm	316SS	1
WASHER M20	Washer: 20mm	316SS	1
O-RING	O-Ring Washer	Rubber	1
TUFF-POST300	Tuff Post 300mm	316SS	1
CON-HILTI-M12x160	Anchor Rod HIT-V-R M12X160	316SS	4

Accessories Required for Complete Lifeline

1	Tensioner with Tension Indicator (Swaged/Swageless/Crimped)	Details Page 65
1	Termination (Swaged/Swageless/Crimped)	Details Page 65
Per Metre	Cable: 8mm diameter, 7x7 wire rope, 316 Stainless Steel	Details Page 64
1	FrogLine Shuttle with Karabiner	Details Page 67

STEEL MOUNTED FROGLINE



LIFELINES

Installation of any SafetyLink Lifeline Systems requires face to face training for manufacturer's accreditation.

The structure must be assessed by an engineer, unless it is clear to a competent person that the structure is adequate.



- TUFF POST is designed to raise the height of a height safety system using either a 300mm or 600mm Tuff Post.
- TUFF POST is a sealed unit made entirely from stainless steel. Designed to be submerged into garden beds, water and other mediums.
- The TUFF POST when installed with a lifeline is used with SafetyLink's energy absorbing FrogLine Lifeline. The FrogLine Lifeline has advanced shock absorbing serpentine designed into each anchor with innovative built-in fall indicators. Therefore reducing the load off the structure and the person in the event of a fall.
- Continuous connection with 8mm stainless steel cable, utilising the FrogLine Shuttle System, up-to four users per system, two per span.

**** Advise if longer bolts required**

**** Advise if 600mm TUFF POST required**

Product Code	Description	Weight (kg)
STAT.FROGTUFF002S -300mm	Lifeline TUFF-POST Steel End Anchor - 300mm	7.771
STAT.FROGTUFF001S -300mm	Lifeline TUFF-POST Steel Intermediate Anchor - 300mm	7.767
STAT.FROGTUFF008S -300mm	Lifeline TUFF-POST Steel Intermediate Extended Anchor - 300mm	7.920
STAT.FROGTUFF003S -300mm	Lifeline TUFF-POST Steel Corner Anchor - 300mm	7.902
STAT.FROGTUFF002S -600mm	Lifeline TUFF-POST Steel End Anchor - 600mm	17.139
STAT.FROGTUFF001S -600mm	Lifeline TUFF-POST Steel Intermediate Anchor - 600mm	17.135
STAT.FROGTUFF008S -600mm	Lifeline TUFF-POST Steel Intermediate Extended Anchor - 600mm	17.288
STAT.FROGTUFF003S -600mm	Lifeline TUFF-POST Steel Corner Anchor - 600mm	17.207



Steel Mounted END Anchor - Raised 300mm**



End anchor designed to be mounted onto steel structure as attachment points for the cable to start and terminate at.

PRODUCT CODE: STAT.FROGTUFF002S

Components	Description	Material	Qty
FROGLINE END	FrogLine Base End	316SS	1
FROGLINE BOLT	FrogLine Eyebolt: M16x35mm	316SS	1
WASHER M20	Washer: 20mm	316SS	1
O-RING	O-Ring Washer	Rubber	1
TUFF-POST300	Tuff Post 300mm	316SS	1
BOLT-M12x50mm-SS	Bolt: M12x50mm 316SS Set Screw	316SS	4
WASHER M12	Washer: M12 316 Stainless Steel	316SS	4
NUT NYLOC M12_316	Nut: M12 316 Stainless Steel	316SS	4

Steel Mounted INTERMEDIATE Anchor - Raised 300mm**



Intermediate anchor designed to limit lifeline span distances.

PRODUCT CODE: STAT.FROGTUFF001S

Components	Description	Material	Qty
FROGLINE INT	FrogLine Base Intermediate	316SS	1
FROGLINE BOLT	FrogLine Eyebolt: M16x35mm	316SS	1
WASHER M20	Washer: 20mm	316SS	1
O-RING	O-Ring Washer	Rubber	1
TUFF-POST300	Tuff Post 300mm	316SS	1
BOLT-M12x50mm-SS	Bolt: M12x50mm 316SS Set Screw	316SS	4
WASHER M12	Washer: M12 316 Stainless Steel	316SS	4
NUT NYLOC M12_316	Nut: M12 316 Stainless Steel	316SS	4

Steel Mounted EXTENDED INTERMEDIATE Anchor - Raised 300mm**



Intermediate anchor designed to limit lifeline span distances. Longer tube to enable bending to suit small degree changes in the line.

PRODUCT CODE: STAT.FROGTUFF008S

Components	Description	Material	Qty
FROGLINE END_EXT	FrogLine Base Intermediate Extended	316SS	1
FROGLINE BOLT	FrogLine Eyebolt: M16x35mm	316SS	1
WASHER M20	Washer: 20mm	316SS	1
O-RING	O-Ring Washer	Rubber	1
TUFF-POST300	Tuff Post 300mm	316SS	1
BOLT-M12x50mm-SS	Bolt: M12x50mm 316SS Set Screw	316SS	4
WASHER M12	Washer: M12 316 Stainless Steel	316SS	4
NUT NYLOC M12_316	Nut: M12 316 Stainless Steel	316SS	4

Steel Mounted CORNER Anchor - Raised 300mm**



Corner anchor designed to re-direct cable by up to 90 degrees.

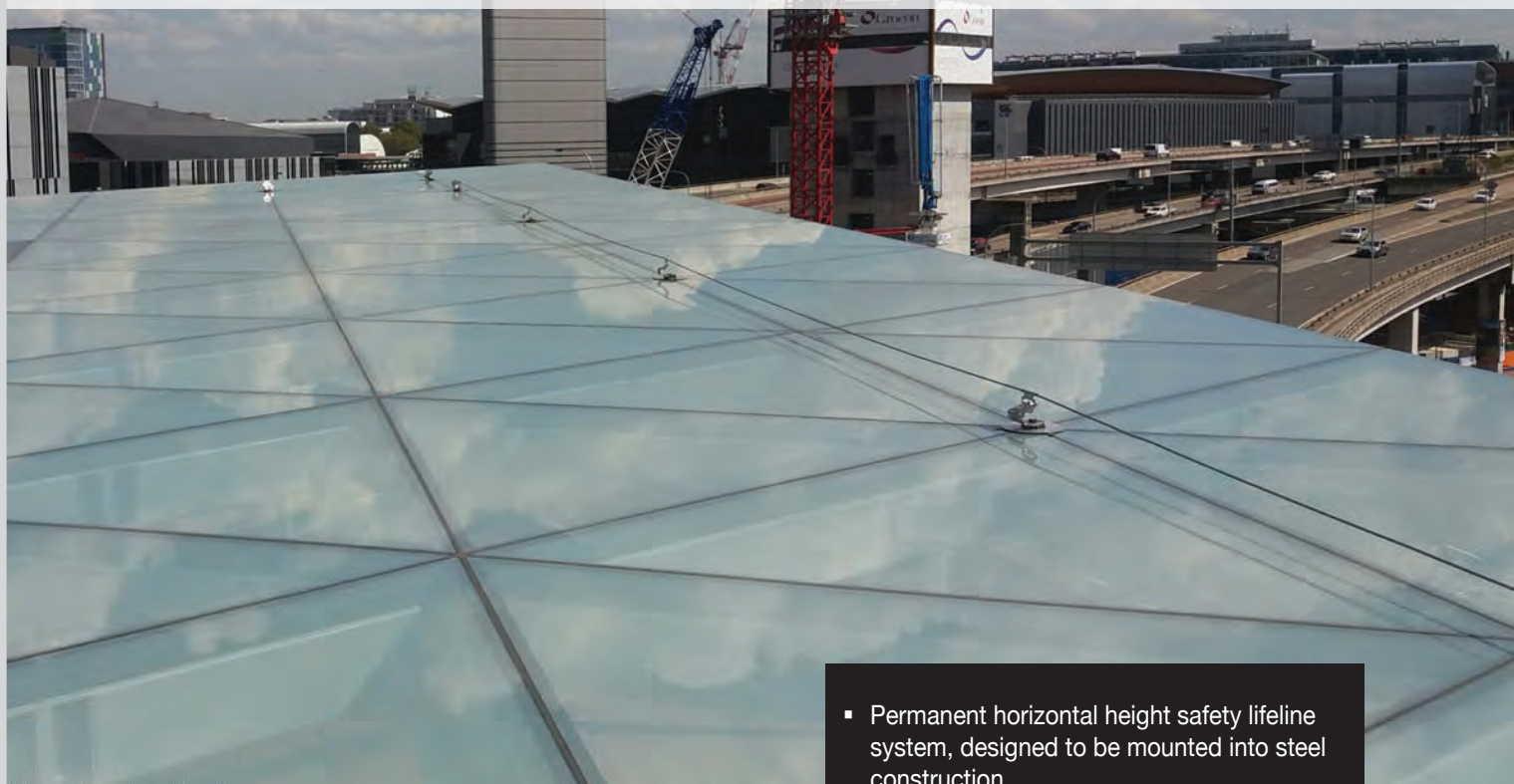
PRODUCT CODE: STAT.FROGTUFF003S

Components	Description	Material	Qty
FROGLINE CNR	FrogLine Base Corner	316SS	1
FROGLINE BOLT	FrogLine Eyebolt: M16x35mm	316SS	1
WASHER M20	Washer: 20mm	316SS	1
O-RING	O-Ring Washer	Rubber	1
TUFF-POST300	Tuff Post 300mm	316SS	1
BOLT-M12x50mm-SS	Bolt: M12x50mm 316SS Set Screw	316SS	4
WASHER M12	Washer: M12 316 Stainless Steel	316SS	4
NUT NYLOC M12_316	Nut: M12 316 Stainless Steel	316SS	4

Accessories Required for Complete Lifeline

1	Tensioner with Tension Indicator (Swaged/Swageless/Crimped)	Details Page 65
1	Termination (Swaged/Swageless/Crimped)	Details Page 65
Per Metre	Cable: 8mm diameter, 7x7 wire rope, 316 Stainless Steel	Details Page 64
1	FrogLine Shuttle with Karabiner	Details Page 67

STEEL MOUNTED FROGLINE



LIFELINES

Installation of any SafetyLink Lifeline Systems requires face to face training for manufacturer's accreditation.

The structure must be assessed by an engineer, unless it is clear to a competent person that the structure is adequate.

- Permanent horizontal height safety lifeline system, designed to be mounted into steel construction.
- Suits pitches no greater than 25 degrees on a multitude of roof profiles.
- Equipped with an engineered energy absorbing region to minimise loads on users and structures in the event of a fall.
- Continuous connection with 8mm stainless steel cable, utilising the FrogLine Shuttle System, up-to four users per system, two per span.

Product Code	Description	Weight (kg)
STAT.FROGST001	Lifeline Steel Intermediate Anchor	0.826
STAT.FROGST002	Lifeline Steel End Anchor	0.830
STAT.FROGST003	Lifeline Steel Corner Anchor	0.879
STAT.FROGST008	Lifeline Steel Intermediate Extended Anchor	0.961



Steel Purlin END Anchor



End anchor designed to be mounted into steel structures as attachment points for the cable to start and terminate at.

- Drill a 17mm hole.

PRODUCT CODE: STAT.FROGSTEO02

Components	Description	Material	Qty
FROGLINE END	FrogLine Base End	316SS	1
BOLT-M16x50mm-SS	Bolt: M16x50mm Set Screw	316SS	1
WASHER M16	Washer: M16	316SS	1
NUT M16	Nut: M16	316SS	1

Steel Purlin INTERMEDIATE Anchor



Intermediate anchor designed to be mounted into steel structures to limit lifeline span distances.

- Drill a 17mm hole.

PRODUCT CODE: STAT.FROGSTEO01

Components	Description	Material	Qty
FROGLINE INT	FrogLine Base Intermediate	316SS	1
BOLT-M16x50mm-SS	Bolt: M16x50mm Set Screw	316SS	1
WASHER M16	Washer: M16	316SS	1
NUT M16	Nut: M16	316SS	1

Steel Purlin EXTENDED INTERMEDIATE Anchor



Intermediate anchor designed to be mounted into steel structures to limit lifeline span distances. Longer tube to enable bending to suit small degree changes in the line.

- Drill a 17mm hole.

PRODUCT CODE: STAT.FROGSTEO08

Components	Description	Material	Qty
FROGLINE INT_EXT	FrogLine Base Intermediate Extended	316SS	1
BOLT-M16x50mm-SS	Bolt: M16x50mm Set Screw	316SS	1
WASHER M16	Washer: M16	316SS	1
NUT M16	Nut: M16	316SS	1

Steel Purlin CORNER Anchor



Corner anchor designed to be mounted into steel structures. The lifeline cable runs through the corner anchor point re-directing it by up to 90 degrees.

- Drill a 17mm hole.

PRODUCT CODE: STAT.FROGSTEO03

Components	Description	Material	Qty
FROGLINE CNR	FrogLine Base Corner	316SS	1
BOLT-M16x50mm-SS	Bolt: M16x50mm Set Screw	316SS	1
WASHER M16	Washer: M16	316SS	1
NUT M16	Nut: M16	316SS	1

Accessories Required for Complete Lifeline

1	Tensioner with Tension Indicator (Swaged/Swageless/Crimped)	Details Page 65
1	Termination (Swaged/Swageless/Crimped)	Details Page 65
Per Metre	Cable: 8mm diameter, 7x7 wire rope, 316 Stainless Steel	Details Page 64
1	FrogLine Shuttle with Karabiner	Details Page 67

MEMBRANE MOUNTED FROGLINE



LIFELINES

Installation of any SafetyLink Lifeline Systems requires face to face training for manufacturer's accreditation.

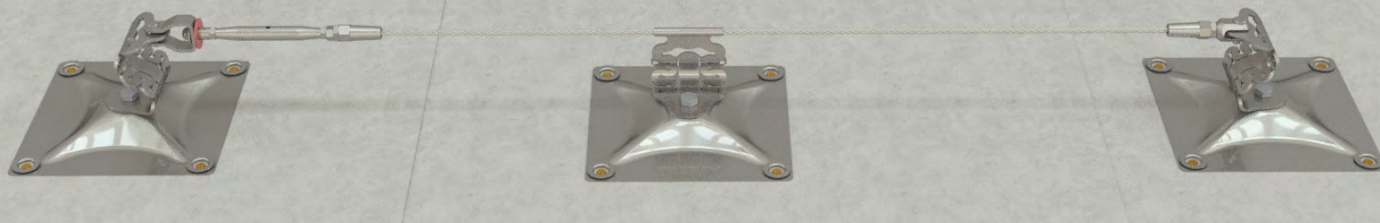
The structure must be assessed by an engineer, unless it is clear to a competent person that the structure is adequate.



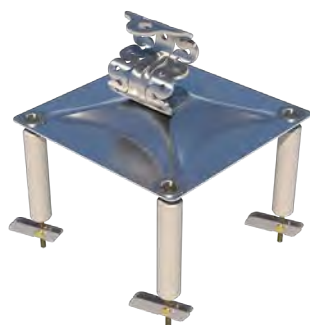
- Permanent horizontal height safety lifeline system, designed to be mounted into membrane roof construction.
- Suits pitches no greater than 25 degrees on a multitude of roof profiles.
- Equipped with an engineered energy absorbing region to minimise loads on users and structures in the event of a fall.
- Continuous connection with 8mm stainless steel cable, utilising the FrogLine Shuttle System, up-to four users per system, two per span.

Product Code	Description	Weight (kg)
STAT.FROGSSQ002+TOGGLE	Lifeline SQ Stainless Steel SurfaceLink End Anchor	2.898
STAT.FROGSSQ001+TOGGLE	Lifeline SQ Stainless Steel SurfaceLink Intermediate Anchor	2.894
STAT.FROGSSQ008+TOGGLE	Lifeline SQ Stainless Steel SurfaceLink Intermediate Extended Anchor	3.029
STAT.FROGSSQ003+TOGGLE	Lifeline SQ Stainless Steel SurfaceLink Corner Anchor	3.047





Membrane END Anchor



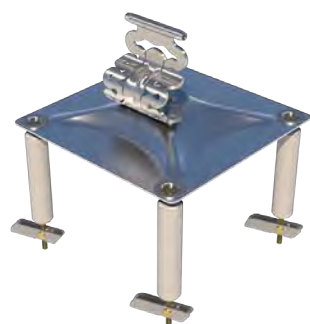
End anchor designed to be mounted into steel structures as attachment points for the cable to start and terminate at.

- Drill four holes with size 30mm holesaw through entire roof sheeting.

PRODUCT CODE: STAT.FROGSSQ002

Components	Description	Material	Qty
FROGLINE END	FrogLine Base End	316SS	1
ADV-PLATE-SS-295SQ	SurfaceLink Plate: 295mmx295mm	316SS	1
WASHER M16	Washer: M16	316SS	1
NUT M16	Nut: M16	316SS	1
TOGGLE001	Toggle Anchors - 300mm	316SS	4

Membrane INTERMEDIATE Anchor



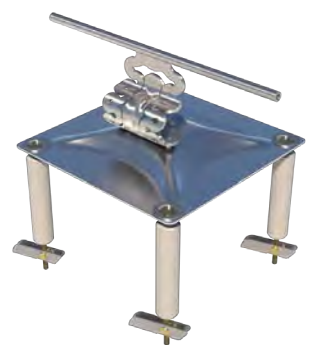
Intermediate anchor designed to be mounted into steel structures to limit lifeline span distances.

- Drill four holes with size 30mm holesaw through entire roof sheeting.

PRODUCT CODE: STAT.FROGSSQ001

Components	Description	Material	Qty
FROGLINE INT	FrogLine Base Intermediate	316SS	1
BOLT-M16x50mm-SS	Bolt: M16x50mm Set Screw	316SS	1
WASHER M16	Washer: M16	316SS	1
NUT M16	Nut: M16	316SS	1
TOGGLE001	Toggle Anchors - 300mm	316SS	4

Membrane EXTENDED INTERMEDIATE Anchor



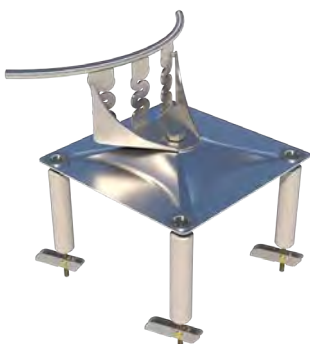
Intermediate anchor designed to be mounted into steel structures to limit lifeline span distances. Longer tube to enable bending to suit small degree changes in the line.

- Drill four holes with size 30mm holesaw through entire roof sheeting.

PRODUCT CODE: STAT.FROGSSQ008

Components	Description	Material	Qty
FROGLINE INT_EXT	FrogLine Base Intermediate Extended	316SS	1
BOLT-M16x50mm-SS	Bolt: M16x50mm Set Screw	316SS	1
WASHER M16	Washer: M16	316SS	1
NUT M16	Nut: M16	316SS	1
TOGGLE001	Toggle Anchors - 300mm	316SS	4

Membrane CORNER Anchor



Corner anchor designed to be mounted into steel structures. The lifeline cable runs through the corner anchor point re-directing it by up to 90 degrees.

- Drill four holes with size 30mm holesaw through entire roof sheeting.

PRODUCT CODE: STAT.FROGSSQ003

Components	Description	Material	Qty
FROGLINE CNR	FrogLine Base Corner	316SS	1
BOLT-M16x50mm-SS	Bolt: M16x50mm Set Screw	316SS	1
WASHER M16	Washer: M16	316SS	1
NUT M16	Nut: M16	316SS	1
TOGGLE001	Toggle Anchors - 300mm	316SS	4

Accessories Required for Complete Lifeline

1	Tensioner with Tension Indicator (Swaged/Swageless/Crimped)	Details Page 65
1	Termination (Swaged/Swageless/Crimped)	Details Page 65
Per Metre	Cable: 8mm diameter, 7x7 wire rope, 316 Stainless Steel	Details Page 64
1	FrogLine Shuttle with Karabiner	Details Page 67

CONCRETE MOUNTED WALL FROGLINE



- Permanent horizontal height safety lifeline system, designed to be wall mounted into concrete.
- Concrete Insert must be chemically fastened.
- FrogLine Bolts installed as part of the lifeline allows easy proof load testing to be completed without the need to remove any components from the system.
- Equipped with an engineered energy absorbing region to minimise loads on users and structures in the event of a fall.
- Continuous connection with 8mm stainless steel cable, utilising the FrogLine Shuttle System, up-to four users per system, two per span.

LIFELINES

Installation of any SafetyLink Lifeline Systems requires face to face training for manufacturer's accreditation.

The structure must be assessed by an engineer, unless it is clear to a competent person that the structure is adequate.

Product Code	Description	Weight (kg)
STAT.FROGCON002	Concrete End Anchor	1.023
STAT.FROGCON001	Concrete Intermediate Anchor	1.019
STAT.FROGCON006	Concrete Corner Wall Anchor	2.938
Concrete Mounted (Internal) Corner Wall Anchor Components Below		
STAT.FROGCON001	Concrete Intermediate Anchor x 2	2.038
CORNERTUBE90	Corner Tube: 90 degrees	0.179



Concrete Mounted END Anchor



End anchor designed to be mounted into a concrete wall structure as attachment points for the cable to start and terminate at.

- Chemically anchored into concrete.
- Drill a 28mm hole to a depth of 90mm.

PRODUCT CODE: STAT.FROGCON002

Components	Description	Material	Qty
FROGLINE END	FrogLine Base End	316SS	1
FROGLINE BOLT	FrogLine Eyebolt M16 35mm	316SS	1
CON-INSERT	ConcreteLink Insert M16 90mm	316SS	1

Concrete Mounted INTERMEDIATE Anchor



Intermediate anchor designed to be mounted into a concrete wall structure, to limit lifeline span distances.

- Chemically anchored into concrete.
- Drill a 28mm hole to a depth of 90mm.

PRODUCT CODE: STAT.FROGCON001

Components	Description	Material	Qty
FROGLINE INT	FrogLine Base Intermediate	316SS	1
FROGLINE BOLT	FrogLine Eyebolt M16 35mm	316SS	1
CON-INSERT	ConcreteLink Insert M16 90mm	316SS	1

Concrete Mounted CORNER WALL Anchor



Concrete anchor designed to be mounted into a concrete wall on internal and external corners. The lifeline cable runs through the corner tube re-directing it by up to 90 degrees.

- Chemically anchored into concrete.
- Drill a 28mm hole to a depth of 90mm.

Product Code	Description	Material	Qty
STAT.FROGCON001	FrogLine Concrete Intermediate	316SS	2
CORNERTUBE90	Corner Tube: 90 degrees	316SS	1

Concrete Mounted (EXTERNAL) CORNER WALL Anchor



Corner anchor designed to be mounted into a concrete wall as part of a horizontal lifeline system. The lifeline cable runs through the corner anchor point re-directing it by up to 90 degrees.

PRODUCT CODE: STAT.FROGCON006

Components	Description	Material	Qty
FROGLINE CNR_WM	FrogLine Corner_WALL	316SS	1
FROGLINE CNR_WM_BRACKET	FrogLine Corner_WALL Bracket(made to suit)	316SS	1
BOLT-M16x35mm-SS	Bolt: M16x35mm Set Screw	316SS	1
WASHER M16	Washer: M16	316SS	1
NUT M16	Nut: M16	316SS	1
FROGLINE BOLT	FrogLine Eyebolt M16 35mm	316SS	4
CON-INSERT	ConcreteLink Insert M16 90mm	316SS	4

Accessories Required for Complete Lifeline

1	Tensioner with Tension Indicator (Swaged/Swageless/Crimped)	Details Page 65
1	Termination (Swaged/Swageless/Crimped)	Details Page 65
Per Metre	Cable: 8mm diameter, 7x7 wire rope, 316 Stainless Steel	Details Page 64
1	Overhead Shuttle with Karabiner	Details Page 67

STEEL MOUNTED WALL FROGLINE



LIFELINES

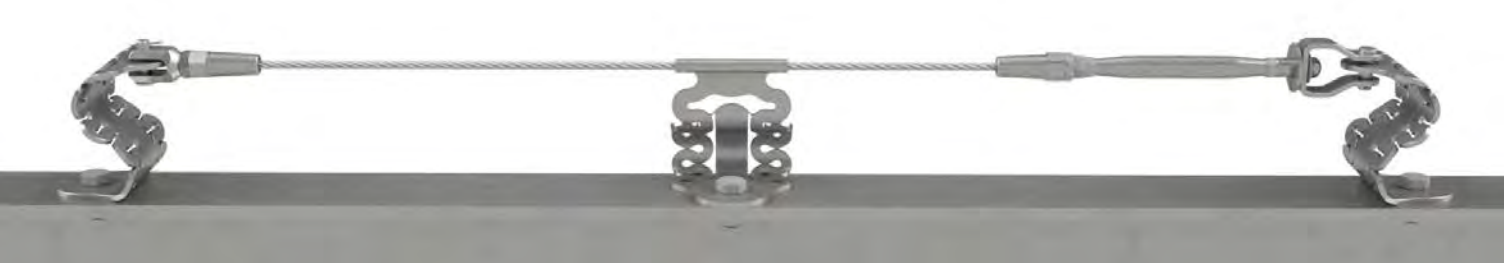
Installation of any SafetyLink Lifeline Systems requires face to face training for manufacturer's accreditation.

The structure must be assessed by an engineer, unless it is clear to a competent person that the structure is adequate.

- Permanent horizontal height safety lifeline system, designed to be wall mounted onto steel purlin construction.
- Equipped with an engineered energy absorbing region to minimise loads on users and structures in the event of a fall.
- Continuous connection with 8mm stainless steel cable, utilising the FrogLine Shuttle System, up-to four users per system, two per span.

Product Code	Description	Weight (kg)
STAT.FROGST002	Lifeline Steel Purlin End Anchor	0.830
STAT.FROGST001	Lifeline Steel Purlin Intermediate Anchor	0.826
STAT.FROGST005	Lifeline Steel Purlin Corner Wall Anchor	1.618





Steel Purlin END Anchor



End anchor designed to be mounted into steel structures as part of a wall mounted horizontal lifeline system.

- End anchor attachment points for the cable to start and terminate at.
- Drill a 17mm hole.

PRODUCT CODE: STAT.FROGSTE002

Components	Description	Material	Qty
FROGLINE END	FrogLine Base End	316SS	1
BOLT-M16x50mm-SS	Bolt: M16x50mm Set Screw	316SS	1
WASHER M16	Washer: M16	316SS	1
NUT M16	Nut: M16	316SS	1

Steel Purlin INTERMEDIATE Anchor



Intermediate anchor designed to be mounted onto steel purlin construction as part of a wall mounted horizontal lifeline system.

- To limit lifeline span distances.
- Drill a 17mm hole.

PRODUCT CODE: STAT.FROGSTE001

Components	Description	Material	Qty
FROGLINE INT	FrogLine Base Intermediate	316SS	1
BOLT-M16x50mm-SS	Bolt: M16x50mm Set Screw	316SS	1
WASHER M16	Washer: M16	316SS	1
NUT M16	Nut: M16	316SS	1

Steel Purlin CORNER WALL Anchor



Corner anchor designed to be mounted onto steel purlin structures as part of a wall mounted horizontal lifeline system.

- The lifeline cable runs through the corner anchor point re-directing it by up to 90 degrees.

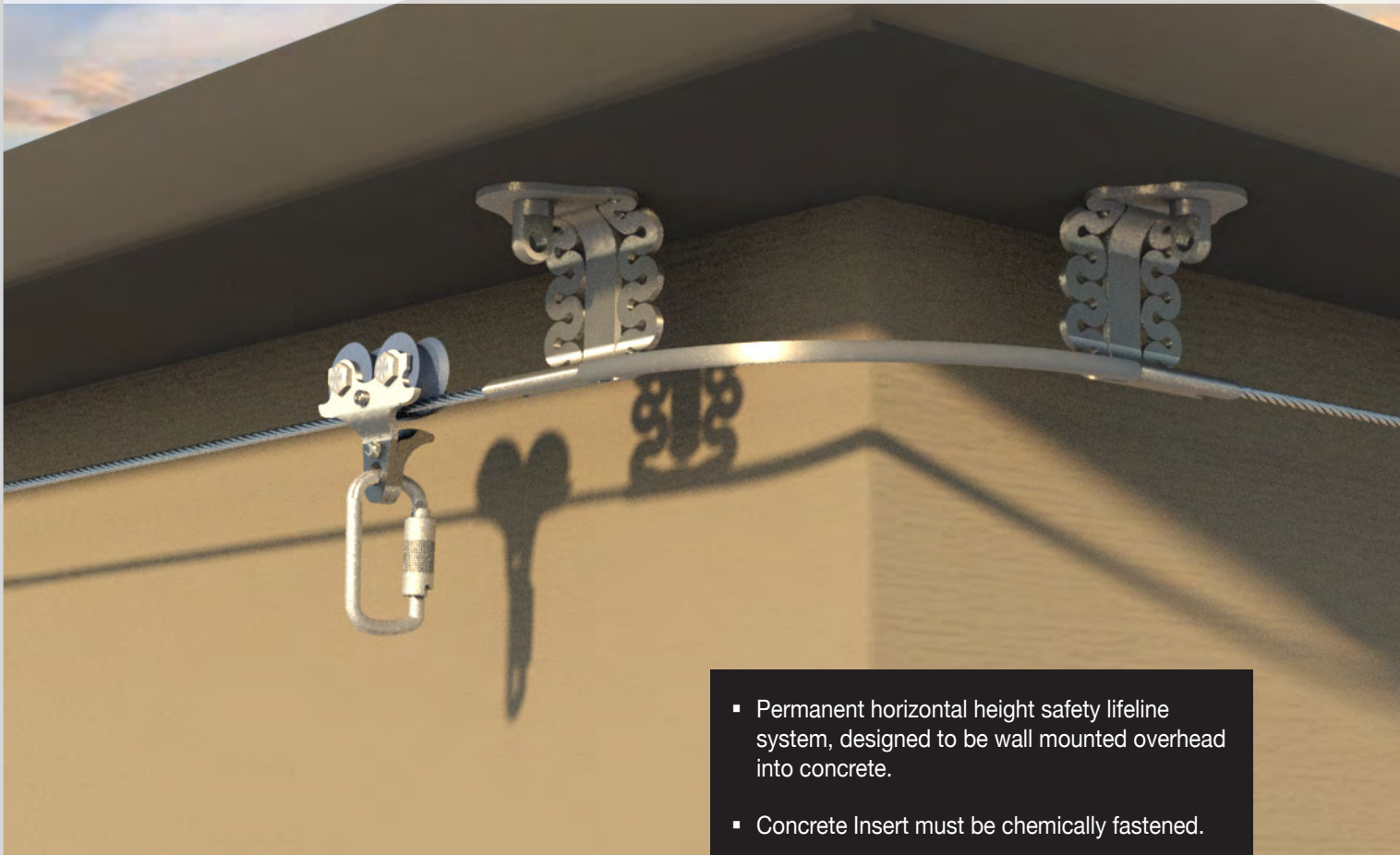
PRODUCT CODE: STAT.FROGSTE005

Components	Description	Material	Qty
FROGLINE CNR_WM	FrogLine Base Corner WALL	316SS	1
FROGLINE CNR_WM_BRACKET	FrogLine Base Corner WALL BRACKET (made to suit)	316SS	1
BOLT-M16x50mm-SS	Bolt: M16x50mm Set Screw	316SS	1
WASHER M16	Washer: M16	316SS	1
NUT M16	Nut: M16	316SS	1
FIXINGS REQUIRED TO INSTALL TO STRUCTURE			

Accessories Required for Complete Lifeline

1	Tensioner with Tension Indicator (Swaged/Swageless/Crimped)	Details Page 65
1	Termination (Swaged/Swageless/Crimped)	Details Page 65
Per Metre	Cable: 8mm diameter, 7x7 wire rope, 316 Stainless Steel	Details Page 64
1	Overhead Shuttle with Karabiner	Details Page 67

CONCRETE MOUNTED OVERHEAD FROGLINE



LIFELINES

Installation of any SafetyLink Lifeline Systems requires face to face training for manufacturer's accreditation.

The structure must be assessed by an engineer, unless it is clear to a competent person that the structure is adequate.

- Permanent horizontal height safety lifeline system, designed to be wall mounted overhead into concrete.
- Concrete Insert must be chemically fastened.
- FrogLine Bolts installed as part of the FrogLine Concrete Lifeline allows easy proof load testing to be completed without the need to remove any components from the system.
- Equipped with an engineered energy absorbing region to minimise loads on users and structures in the event of a fall.
- Continuous connection with 8mm stainless steel cable, utilising the FrogLine Shuttle System, up-to four users per system, two per span.

Product Code	Description	Weight (kg)
STAT.FROGCON009	Concrete Overhead End Anchor	1.030
STAT.FROGCON004	Concrete Overhead Intermediate Anchor	1.026
STAT.SHUTL002	Overhead Shuttle with Karabiner	0.840
Concrete Mounted Overhead Corner Anchor Components Below		
STAT.FROGCON004	Concrete Overhead Intermediate Anchors x 2	1.026
CORNERTUBE90	Corner Tube: 90 degrees	0.179



Concrete Mounted END Anchor



End anchor designed to be mounted into a concrete overhead structure as attachment points for the cable to start and terminate at.

- Chemically anchored into concrete.
- Drill a 28mm hole to a depth of 90mm.

PRODUCT CODE: STAT.FROGCON009

Components	Description	Material	Qty
FROGLINE END_OH	FrogLine Base End OVERHEAD	316SS	1
FROGLINE BOLT	FrogLine Eyebolt M16 35mm	316SS	1
CON-INSERT	ConcreteLink Insert M16 90mm	316SS	1

Concrete Mounted OVERHEAD INTERMEDIATE Anchor



Intermediate anchor designed to be mounted into a concrete overhead structure to limit lifeline span distances.

- Chemically anchored into concrete.
- Drill a 28mm hole to a depth of 90mm.

PRODUCT CODE: STAT.FROGCON004

Components	Description	Material	Qty
FROGLINE INT_OH	FrogLine Base Intermediate OVERHEAD	316SS	1
FROGLINE BOLT	FrogLine Eyebolt M16 35mm	316SS	1
CON-INSERT	ConcreteLink Insert M16 90mm	316SS	1

Concrete Mounted OVERHEAD CORNER Anchor



Corner anchor designed to be mounted into a concrete overhead structure. The lifeline cable runs through the corner tube re-directing it by up to 90 degrees.

- Chemically anchored into concrete.
- Drill a 28mm hole to a depth of 90mm.

Product Code	Description	Material	Qty
STAT.FROGCON004	FrogLine Concrete Intermediate OVERHEAD	316SS	2
CORNERTUBE90	Corner Tube: 90 degrees	316SS	1

Overhead Lifeline Shuttle



- For use on SafetyLink OVERHEAD Lifeline Systems.
- No need to disconnect from Lifeline as it passes easily over Intermediate anchor points.
- Shuttle: Stainless Steel construction with Nylon Wheels.
- Karabiner - Alloy steel, silver zinc plated.
- Suits 8mm Cable.

PRODUCT CODE: STAT.SHUTL002

Components	Description	Material	Qty
STAT.SHUTL002.01	OVERHEAD Shuttle (Nylon Wheels)	316SS	1
KARBNR034	SafetyLink Karabiner	Stainless Steel	1

Accessories Required for Complete Lifeline

1	Tensioner with Tension Indicator (Swaged/Swageless/Crimped)	Details Page 65
1	Termination (Swaged/Swageless/Crimped)	Details Page 65
Per Metre	Cable: 8mm diameter, 7x7 wire rope, 316 Stainless Steel	Details Page 64
1	Overhead Shuttle with Karabiner	Details Page 67

STEEL MOUNTED OVERHEAD FROGLINE



LIFELINES

Installation of any SafetyLink Lifeline Systems requires face to face training for manufacturer's accreditation.

The structure must be assessed by an engineer, unless it is clear to a competent person that the structure is adequate.

- Permanent horizontal height safety lifeline system, designed to be mounted overhead onto steel purlin construction.
- Equipped with an engineered energy absorbing region to minimise loads on users and structures in the event of a fall.
- Continuous connection with 8mm stainless steel cable, utilising the FrogLine Shuttle System, up-to four users per system, two per span.

Product Code	Description	Weight (kg)
STAT.FROGST009	Lifeline Steel Purlin Overhead End Anchor	0.837
STAT.FROGST004	Lifeline Steel Purlin Overhead Intermediate Anchor	0.833
STAT.SHUTL002	Overhead Lifeline Shuttle with Karabiner	0.840



Steel Purlin END Anchor



End anchor designed to be mounted into steel structures as part of a overhead horizontal lifeline system.

- End anchor attachment points for the cable to start and terminate at.
- Drill a 17mm hole.

PRODUCT CODE: STAT.FROGST009

Components	Description	Material	Qty
FROGLINE END_OH	FrogLine Base End OVERHEAD	316SS	1
BOLT-M16x50mm-SS	Bolt: M16x50mm Set Screw	316SS	1
WASHER M16	Washer: M16	316SS	1
NUT M16	Nut: M16	316SS	1

Steel Purlin INTERMEDIATE OVERHEAD Anchor



Intermediate anchor designed to be mounted into steel structure as part of an overhead horizontal lifeline system.

- To limit lifeline span distances.
- Drill a 17mm hole.

PRODUCT CODE: STAT.FROGST004

Components	Description	Material	Qty
FROGLINE INT_OH	FrogLine Intermediate OVERHEAD	316SS	1
BOLT-M16x50mm-SS	Bolt: M16x50mm Set Screw	316SS	1
WASHER M16	Washer: M16	316SS	1
NUT M16	Nut: M16	316SS	1

Overhead Lifeline Shuttle



- For use on SafetyLink OVERHEAD Lifeline Systems.
- No need to disconnect from Lifeline as it passes easily over Intermediate anchor points.
- Shuttle: Stainless Steel construction, with Nylon Wheels.
- Karabiner - Alloy steel, silver zinc plated.
- Suits 8mm Cable.

PRODUCT CODE: STAT.SHUTL002

Components	Description	Material	Qty
STAT.SHUTL002.01	OVERHEAD Shuttle (Nylon Wheels)	316SS	1
KARBNR034	SafetyLink Karabiner	Stainless Steel	1

Accessories Required for Complete Lifeline

1	Tensioner with Tension Indicator (Swaged/Swageless/Crimped)	Details Page 65
1	Termination (Swaged/Swageless/Crimped)	Details Page 65
Per Metre	Cable: 8mm diameter, 7x7 wire rope, 316 Stainless Steel	Details Page 64
1	Overhead Shuttle with Karabiner	Details Page 67

‘Innovative Fall Protection’

SafetyLink’s horizontal lifeline systems make traversing along lifelines simple and easy, eliminating the need to disconnect from the line, our intermediate and corners are designed so our innovative shuttles can glide freely.



FrogLine Video



LIFELINE FITTINGS

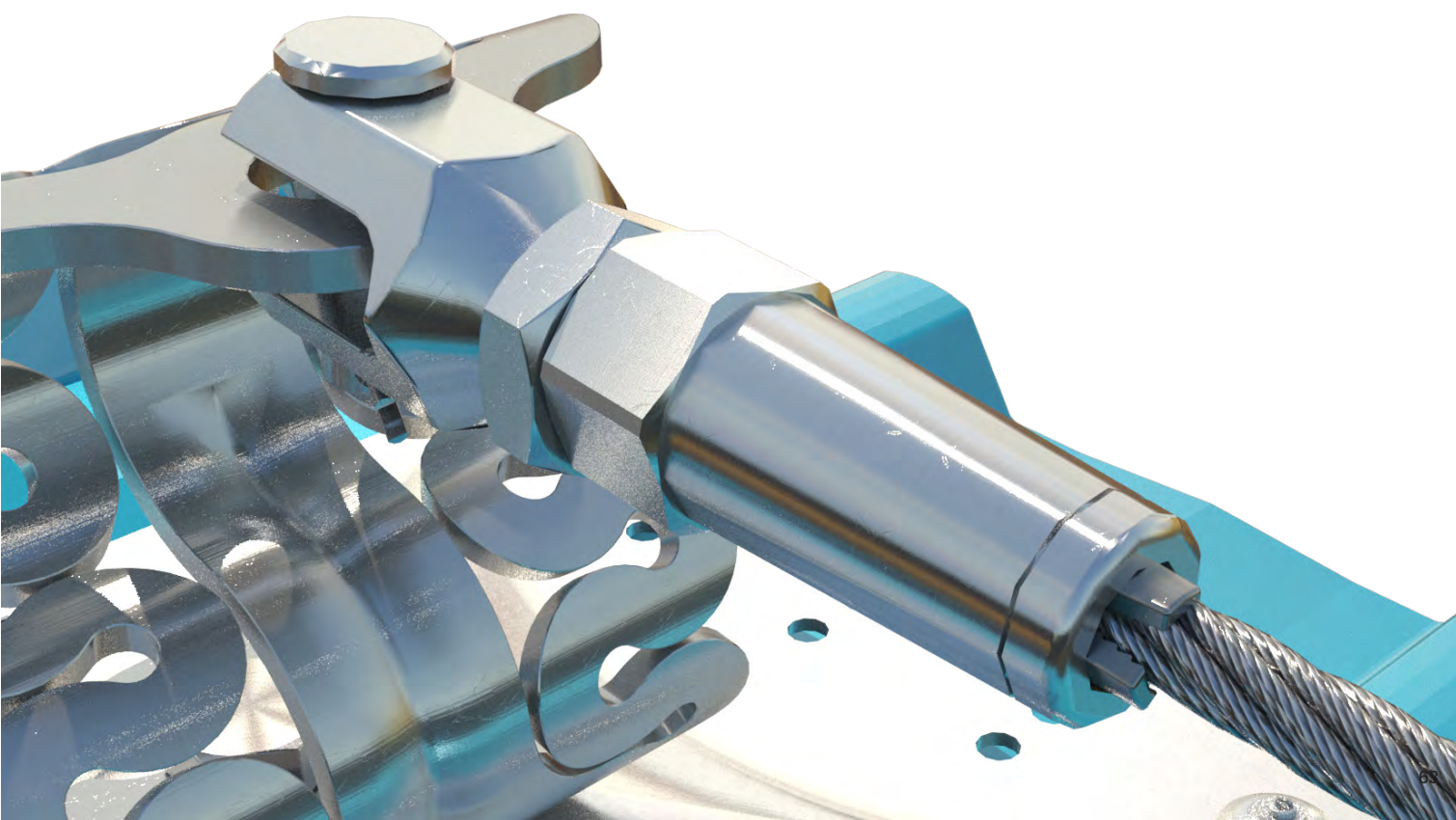
The FrogLine lifelines low profile design combines effortless energy absorbing capabilities into every intermediate, end and corner anchor, consequently incorporating the line energy absorbers into the system. This inventive approach ensures our FrogLine lifeline systems are always installed with the maximum energy absorption possible regardless of the horizontal line length.

- Patented low profile design.
- Fast simplified installation.
- Advanced shock absorbing serpentine.
- Innovative built in fall indicators.
- Solid 316 stainless steel components.
- Quick connect shuttle.
- Smooth transition over intermediates.

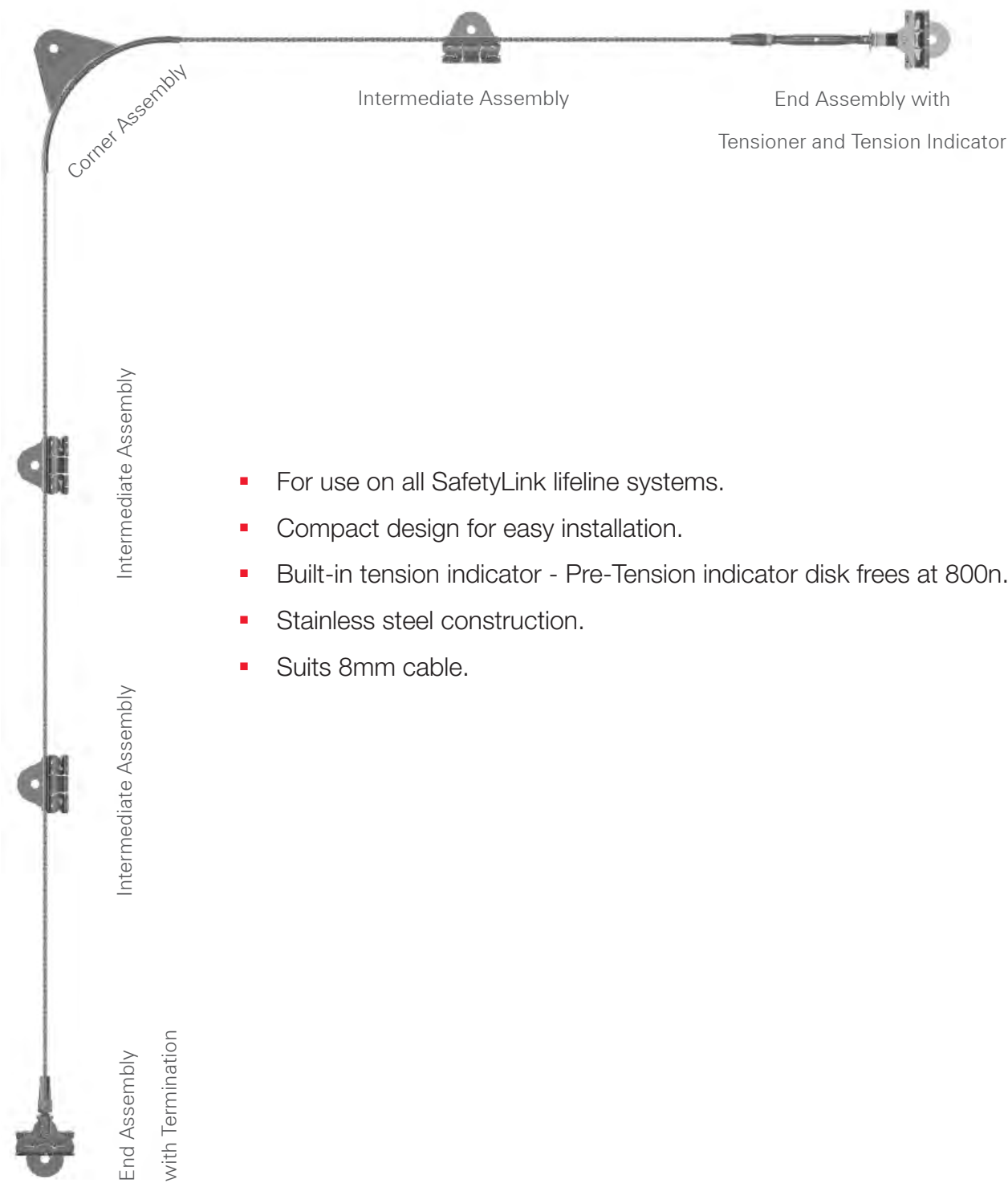
Shuttles/ Fittings

SafetyLink will provide you with the following:

- Supply a large range of anchors points that protect workers from the ground up.
- All products tested and manufactured to current Standards.
- Access to online training modules 24/7.
- Supply of installation guides and product data sheets.
- Assisted system design, layout and advice.
- Extensive technical support with collectively over 100 years of experience in the height safety industry.



SAFETYLINK LIFELINE TERMINALS



- For use on all SafetyLink lifeline systems.
- Compact design for easy installation.
- Built-in tension indicator - Pre-Tension indicator disk frees at 800n.
- Stainless steel construction.
- Suits 8mm cable.

Cable



- For use on SafetyLink Lifeline Systems.
- 316 Stainless steel cable.
- 8mm diameter.
- 7 x 7 and 7 x 19 wire rope.

Product Code	Description	Material	Qty	Weight (kg)
STAT.CABLE001	Cable: 8mm 7x7, per metre	316SS	1	0.260
STAT.CABLE001.01	Roll Cable: 8mm 7x7, 305 metres	316SS	1	83
STAT.CABLE_8mm_7x19_SS	Cable: 8mm 7x19, per metre	316SS	1	0.260
STAT.CABLE002	Roll Cable: 8mm 7x7,500 metre	316SS	1	138

SWAGELESS Terminals



- Swageless Terminals.
- Do not reuse jaws or house, contact SafetyLink to replace.
- Easy installation.

Product Code	Description	Material	Qty	Weight (kg)
STAT.TERMN002	Swageless Termination	316SS	1	0.362
STAT.TENSR002	Swageless Tensioner	316SS	1	0.629
STAT.TENSR004	Swageless Tensioner with Tension Indicator	316SS	1	0.815

CRIMP ON Terminals



- Crimp On Terminals.
- Easy installation with battery powered crimping tool.

Product Code	Description	Material	Qty	Weight (kg)
STAT.TERMN003	Crimped Termination	316SS	1	0.174
STAT.TENSR003	Crimped Tensioner	316SS	1	0.499
STAT.TENSR005	Crimped Tensioner & Tension Indicator	316SS	1	0.679

SWAGED Terminals



- Swaged Terminals.
- Installation requires a Roll Swaging Machine.

Product Code	Description	Material	Qty	Weight (kg)
STAT.TERMN001	Swaged Termination	316SS	1	0.236
STAT.TENSR001	Swaged Tensioner	316SS	1	0.551
STAT.TENSR007	Swaged Tensioner with Tension Indicator	316SS	1	0.737

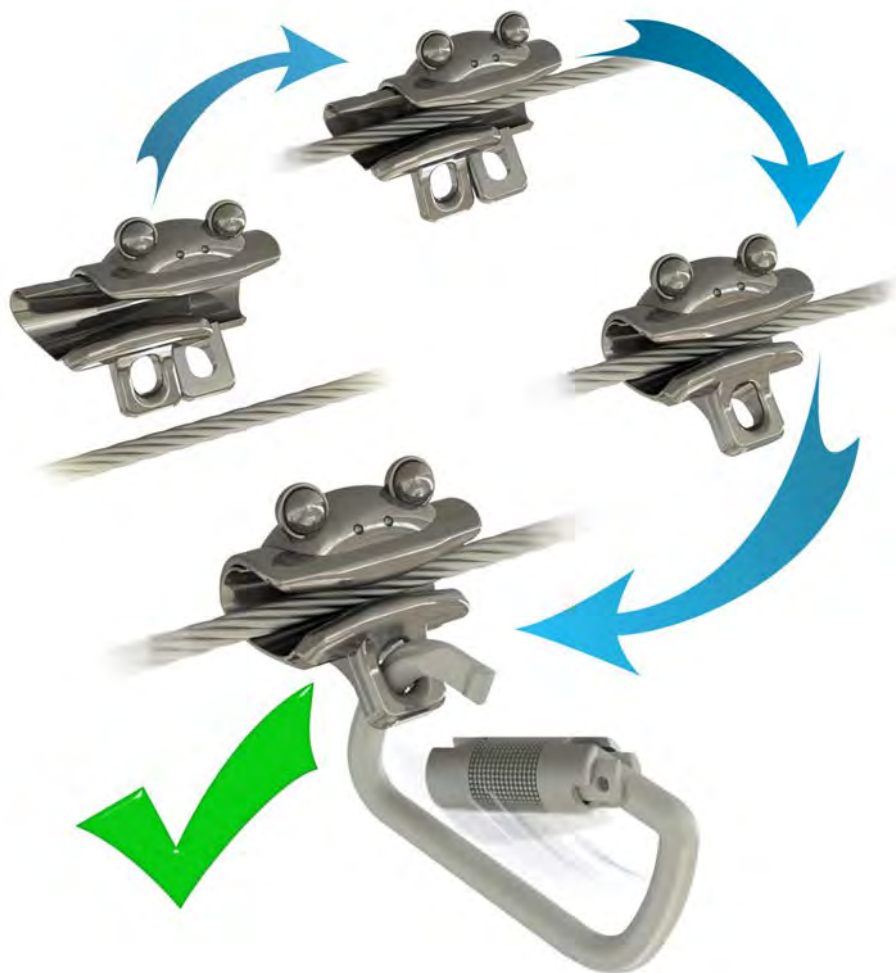
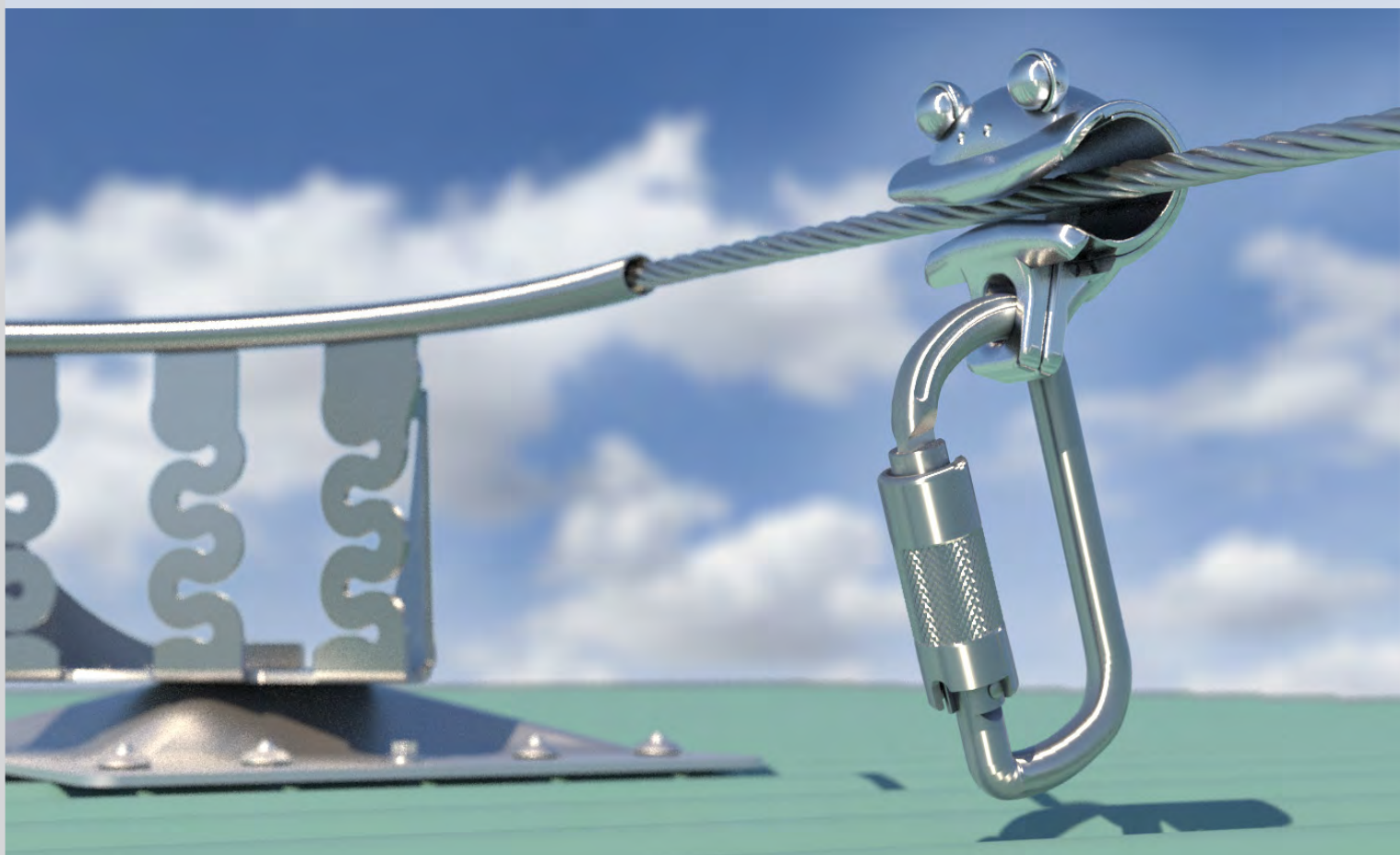
Cable Connector

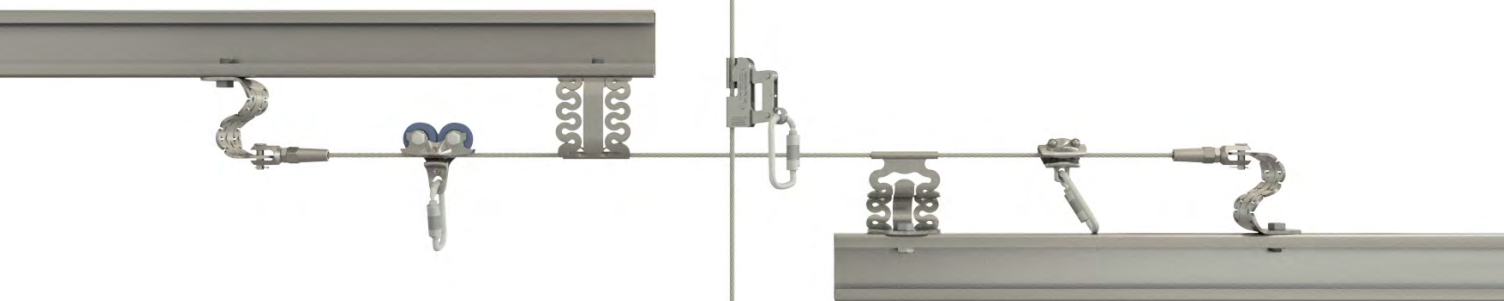


- Cable Connector used to join 8mm cable on long lifelines.
- Installation requires battery crimping tool.

Product Code	Description	Material	Qty	Weight (kg)
STAT.CABJOIN	SS Cable Connector	316SS	1	0.125

LIFELINE SHUTTLES





Horizontal Lifeline Shuttle



- For use on SafetyLink **HORIZONTAL** Lifeline Systems.
- No need to disconnect from Lifeline as it passes easily over Intermediate anchor points.
- Suits pitches up-to 25 degrees.
- Must be used with included SafetyLink Karabiner.
- Suits 8mm Cable.

PRODUCT CODE: STAT.SHUTL003

Components	Description	Material	Qty	Weight (kg)
STAT.SHUTL003.01	FROGLINE Shuttle	316SS	1	0.401
KARBNR034	SafetyLink Karabiner	Stainless Steel	1	0.212

Horizontal Overhead Lifeline Shuttle



- For use on SafetyLink horizontal **OVERHEAD** Lifeline Systems.
- No need to disconnect from Lifeline as it passes easily over Intermediate anchor points.
- Suits pitches up-to 25 degrees.
- Must be used with included SafetyLink Karabiner.
- Suits 8mm Cable.

PRODUCT CODE: STAT.SHUTL002

Components	Description	Material	Qty	Weight (kg)
STAT.SHUTL002.01	OVERHEAD Shuttle (Nylon Wheels)	316SS	1	0.628
KARBNR034	SafetyLink Karabiner	Stainless Steel	1	0.212

Horizontal Overhead Lifeline Shuttle



- For use on SafetyLink horizontal **OVERHEAD** Lifeline Systems.
- No need to disconnect from Lifeline as it passes easily over Intermediate anchor points.
- Suits pitches up-to 25 degrees.
- Must be used with included SafetyLink Karabiner.
- Suits 8mm Cable.

PRODUCT CODE: STAT.SHUTL004

Components	Description	Material	Qty	Weight (kg)
STAT.SHUTL004.01	OVERHEAD Shuttle (Stainless Steel Wheels)	316SS	1	0.943
KARBNR034	SafetyLink Karabiner	Stainless	1	0.212

Vertical Lifeline Shuttle with Karabiner



- For use on SafetyLink **VERTICAL** Lifeline Systems.
- Will track up or down with user vertically and self lock if a fall occurs.
- Can be installed/removed mid-line.
- For use on 8mm stainless steel or galvanised wire only.
- Must be used in conjunction with a personal energy absorber.
- Must be used with included SafetyLink Karabiner.

PRODUCT CODE: LADER001.10

Components	Description	Material	Qty	Weight (kg)
LADER001.10.01	Vertical Shuttle	316SS	1	0.482
KARBNR034	SafetyLink Karabiner	Stainless Steel	1	0.163

‘Innovative Fall Protection’

SafetyLink's patented ladder stabilisers are an essential entry point to any height safety system.

The LadderLink stabilises your ladder preventing sideways movement and therefore holding your ladder safely in place and protecting the worker.

The Fixed LadderLink has been manufactured from marine grade aluminum, a durable light weight product for ease of installation.

SafetyLink have finished this product off with a protective membrane in the form of a powder coat finish, this ensures your product is ready for any additional colouring you would like to apply.



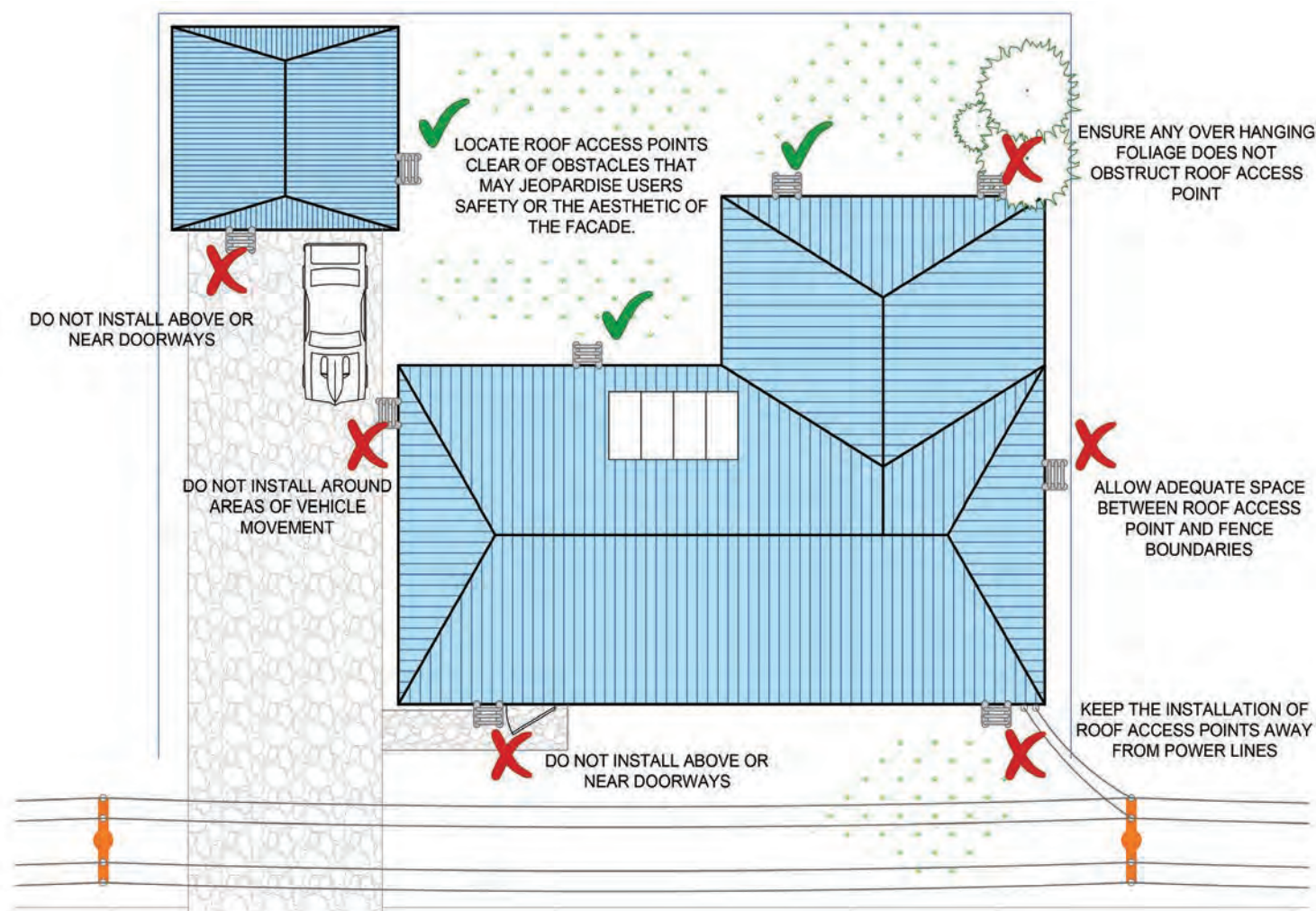
LadderLink Installation Video
on Tile Roof



LadderLink Installation Video
on Metal Roof

Roof





Access

SafetyLink manufactures Height Safety Anchor and Lifeline systems which provides restraint and fall arrest safety for all buildings and industrial sites, from a series of anchor points to a complete network of systems for maintenance, cleaning, access and inspections where working at heights.

In order to complete your height safety system SafetyLink stock:

- Ladder stabilisers brackets with ladder strap.
- Certification labels for individual anchor points.
- Warning signs with essential entry point information, providing dates of installation and certification of the height safety system.
- First man up stops.

LADDER ACCESS BRACKETS

- Essential entry point system to any height safety system, quick and easy installation.
- LadderLink stabilises your ladder preventing sideways movement and therefore holding your ladder in place.
- Adjusting the pitch of the LadderLink is to be done by a sheet metal fabricators bending machine.
- Protects gutters and barge capping.



Ladder Strap



- The Ladder Restraint Strap is to be used in conjunction with SafetyLink's Fixed LadderLink.
- Secure your ladder to the Fixed LadderLink ensuring the strap is tensioned and installed under the support cradle to prevent tripping hazards.
- WARNING: Not suitable for permanent outdoor installation.

Product Code	Description	Material	Qty	Weight (kg)
LADFX009	Ladder Strap	Webbing	1	0.210

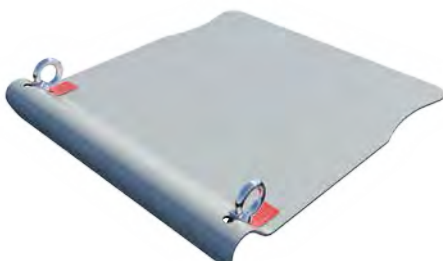
Facia Mounted LadderLink



- Facia mounted ladder bracket.
- Quick and easy installation.
- Essential entry point system to stabilise your ladder stopping sideways movement and therefore holding the ladder in place safely.
- In addition the LadderLink bracket has two tie off points to aid in securing the ladder in position.

Product Code	Description	Material	Qty	Weight (kg)
LADFX008	LadderLink: Facia Mounted	*MGA	1	1.046g

Rope Guide Bracket



- Guides your ropes and protects your ropes being damaged when **abseiling** over a sharp edge or gutter.
- One person user, easy to install and non-obtrusive.
- Protects the guttering systems from rope pressure and damage.
- Can be permanently installed or removed after use.
- Eyelets are not rated as anchor points.
- Eyelets for use with strap to contain abseil rope.

Product Code	Description	Material	Qty	Weight (kg)
LADFX007	Rope Guide Bracket	*MGA	1	3.415

*MGA = Marine Grade Aluminium



Fixed LadderLink



- Quick and easy installation, protects gutters.
- Essential entry point system to stabilise your ladder.
- In addition, the LadderLink bracket has two tie off points to aid in securing the ladder in position.
- Can be installed under or over roof sheets.

Product Code	Description	Material	Qty	Weight (kg)
LADFX001	Fixed LadderLink	*MGA	1	2.290

Extended LadderLink



- To extend beyond box gutters and larger areas.
- 980mm gutter to end, overall length 1115mm.
- In addition the LadderLink bracket has two tie off points to aid in securing the ladder in position.
- Can be installed under or over roof sheets.

Product Code	Description	Material	Qty	Weight (kg)
LADFX002	Fixed LadderLink: Extended	*MGA	1	6.600

Wall Mounted LadderLink



- Wall mounted ladder bracket, fixes directly onto wall.
- In addition the LadderLink bracket has two tie off points to aid in securing the ladder in position.
- Secure with a minimum of four appropriate fixings, see manual.

Product Code	Description	Material	Qty	Weight (kg)
LADFX003	Fixed LadderLink: Wall Mounted	*MGA	1	2.203

ENTRY ACCESS



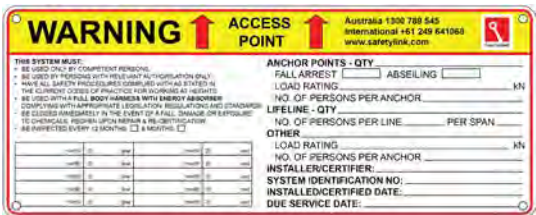
Certification Labels



- Certification Labels supplied in packet of 100.
- Labels contain serial numbers for use in computer tracking systems.
- Supplied with permanent marker.
- To be used for marking each individual anchor point for certification purposes.
- Made from High Density Polyethylene.
- Protective clear cover to prevent removal of text from weather or tampering.

Product Code	Description	Qty	Weight (kg)
LABEL001	Certification Labels	1	0.157

Warning Entry Compliance Sign



- Essential entry point information for safety system.
- Notes installer information, safe use and inspection details.
- Size 300mm x 120mm x 1mm.

Product Code	Description	Qty	Weight (kg)
WARN001	Warning Compliance Entry Sign	1	0.080



First Man Up Strop



- Used as first man up system; reduces the amount of entry access anchors required.
- Quicklink must be attached to a load rated anchor.
- Attachment end should be secured with a strop hook when not in use to ensure it can be accessed from a safe area for next use.
- UV plastic coated to prevent wear on roof sheeting.
- 15kN Rated.

Product Code	Description	Material	Qty	Weight (kg)
STROP001	1m First man up Strop	316SS/PVC	1	0.353
STROP001.5	1.5m First man up Strop	316SS/PVC	1	0.440
STROP002	2m First man up Strop	316SS/PVC	1	0.531
STROP002.5	2.5m First man up Strop	316SS/PVC	1	0.619
STROP003	3m First man up Strop	316SS/PVC	1	0.669
STROP003.5	3.5m First man up Strop	316SS/PVC	1	0.814
STROP004	4m First man up Strop	316SS/PVC	1	0.886

Contact SafetyLink for site specific required lengths

Strop Hook with Sign



- NOT INCLUDED with strops, order separately.
- Secures the attachment point of the strop when not in use, ensuring the wind cannot blow the strop away from the access point.
- Please note this is not a load rated anchor, only to be used as an accessory to secure the strop.
- Hook can be secured with 2 screws or 2 rivets.
- Sprung Gate for easy and secure use.

Product Code	Description	Material	Qty	Weight (kg)
Strohook+Sign	Strop Hook with Warning Sign	316SS	1	0.048

‘Complete Solutions’

TOOLS

Riveting tools for installing SafetyLink’s surface mounted roof anchors.

Crimping tools for crimping tensioners and terminations to the cable on lifeline systems.

Hydrajaws tester for testing concrete mounted anchors.





Tools



RIVET TOOLS



SafetyLink Hand Rivet Tool



- Designed for installing height safety surface mounted anchor points.
- Reliable, lightweight, simple operation with low maintenance.
- Three piece jaws made of CR Mo steel provides long lasting tool life.
- Designed for use with 8mm bulbtite/tri fold rivets.
- Regularly empty collection container and clear swarf deposits from nose piece.
- Maximum Rivet Size : 8mm.
- Length 320mm.

Product Code	Description	Qty	Weight (kg)
HANDTOOL001	SafetyLink Hand Rivet Tool	1	1.200

Rivet - 8mm



- Aluminium Bulbtite Rivets.
- Diametre 7.7mm.

Product Code	Description	Seal	Grip mm	Hole mm	Qty	Weight (kg)
RIVET_8mm(27.7)	8mm Bulbtite Rivet	Green	1.1-9.5	7.8-8.2	1	0.007
RIVET_8mm(34)	8mm Bulbtite Rivet	Yellow	6.4-15.9	7.8-8.2	1	0.009
RIVET_8mm(39)	8mm Bulbtite Rivet	Black	9.5-19.1	7.8-8.2	1	0.011

Gesipa Powerbird BT



- Includes extra battery with case.
- Used in conjunction with bulbtite rivets, (Drill Size 7.8-8.2mm, 27.7mm length, 1.0-9.5mm grip range).
- Constant forward and backward speed of the jaw assembly.
- Immediate repositioning of the jaw assembly after completion of the setting process saves energy and increases setting frequency.
- Electronic control, no mechanical switching.
- Electronic temperature and overloading monitoring.
- High efficiency through ball screw drive with low energy dispersion.
- 3 piece anti-wear jaws.
- Nosepieces: - 3/16", 5mm, 6mm, 1/4", extended nosepieces available.
- Compact, shockproof plastic housing.
- Disposal of spent mandrel through action of gravity, either forwards through the nosepiece or backwards into the spent mandrel container.
- Includes charger, case, battery and multiple nose pieces.

Product Code	Description	Qty	Weight (kg)
GESIPA001.01	Gesipa Powerbird BT Cordless Rivet Tool	1	5.073

Gesipa Tool HN 2-BT



- Gesipa Hand Rivet Tool (HN 2-BT).
- Used in conjunction with 8mm bulbtite rivets.
- Drill size 7.8-8.2mm.
- Length 27.7mm.
- Grip Range 1.0-9.5mm.

Technical Data:

- Stroke: 10mm.
- Length: 577mm.

Product Code	Description	Qty	Weight (kg)
GESIPA001.02	Gesipa Hand Rivet Tool (HN 2-BT)	1	2.071

Rivet Tool Side Ejector Nose Piece



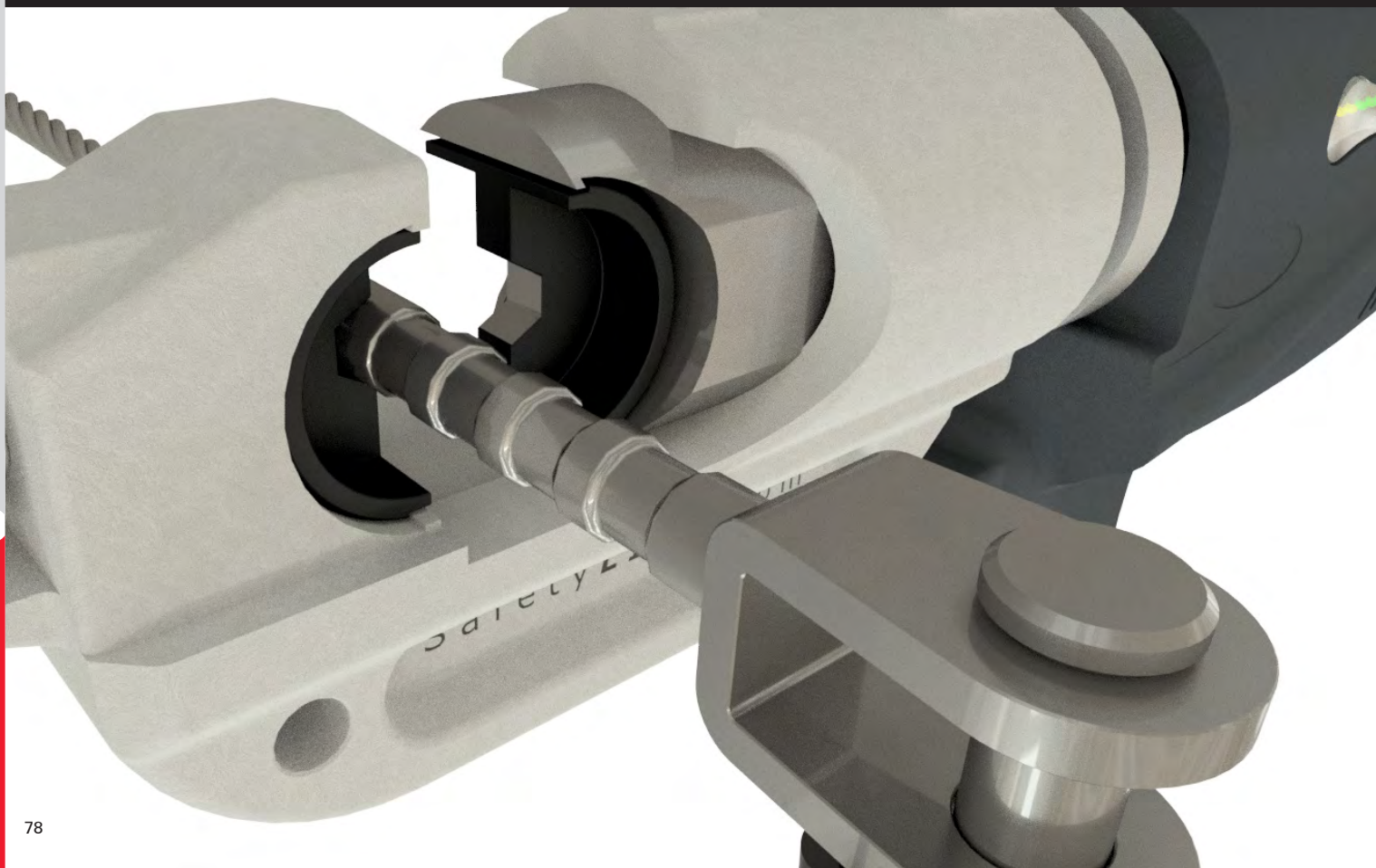
- Nose Piece: 9/32BT Side eject nose assembly and adaptor.
- Eliminate swarf contamination within the tool.
- Prevents possible damage to the nose/jaw assembly and saves time in cleaning.
- Saves battery power with larger stroke.

Product Code	Description	Qty	Weight (kg)
GESIPA001.10	9/32BT Side eject nose assembly & adaptor	1	0.235

CRIMPING TOOL



The battery powered Crimping Tool is used to crimp the Tensioner and Termination to the horizontal and vertical lifelines. Please see installation manual for maintenance instructions to look after your new tool.



Crimping Tool



- Battery powered Crimping Tool.
- Able to rotate for different working positions.
- Battery capacity indicator (LED).
- Includes crimping tool, carry case, charger and two batteries.
- Output force: 12 TONNE.
- Motor: 14.4 VDC.
- C Jaw opening: 42mm.
- EXTRA DIE REQUIRED TO CRIMP 8MM CABLE - Product code: STAT.CRIMP001 (use with STAT.TENSR003, STAT.TENSR005 & STAT.TERMN003).

Product Code	Description	Qty	Weight (kg)
STAT.CRIMP009	Battery powered Crimping Tool	1	17

Crimping Tool Die



- Die for battery powered crimping tool STAT.CRIMP009.
- Required for 8mm Cable, for use with STAT.TENSR003 , STAT.TENSR005 and STAT.TERMN003.
- Size A/F10.83.

Product Code	Description	Qty	Weight (kg)
STAT.CRIMP001	Crimping Tool Die	1	0.194

Battery for Crimping Tool



- Extra Battery for Crimping Tool

Product Code	Description	Qty	Weight (kg)
STAT.CRIMP009.04	Extra Battery for Crimping Tool	1	0.849

HYDRAJAWS PULL TESTER



- To comply with recognised Industry Standards each Concrete Insert must be tested after installation and at every recertification inspection.
- Ensure you wait the recommended curing time as specified by the chemical anchor instructions.
- The pull test can be done using a 16mm threaded eyebolt. Test consists of ultimate pull out force proof loading to 50% of design purpose of anchorage.

Model 2000 Medium Duty Tester Kits

DELUXE Tester Kit

- Comprises of a 50mm stroke tester plus:
- Choice of gauge scope from range of 5kN, 10kN, 15kN, 20kN or 25kN,
 - 150 load spreading bridge with threaded legs,
 - 6 threaded & 6 slotted button adaptors - M4, M5, M6, M8, M10, M12,
 - Bolt tester adaptor with M12 locking adaptor,
 - 3mm ball driver, mounting screws and allen keys.

DELUXE MASTER Tester Kit

- Comprises of DELUXE kit plus:
- Choice of 2 detachable gauges from range of 5kN, 10kN, 15kN, 20kN or 25kN with quick release couplers,
 - Oil replenisher bottle with quick release coupler & Piston key.

Deluxe and Deluxe Master 'PLUS' Tester Kits

- Comprises of standard DELUXE and standard DELUXE MASTER equipment plus:
- 50mm and 75mm solid Hex extension Leg sets
 - M12 ringbolt adapter clevis
 - Four threaded stud adaptors (M10, M12, M16, M20)



Hydrajaws Pull Tester - MODEL 2000



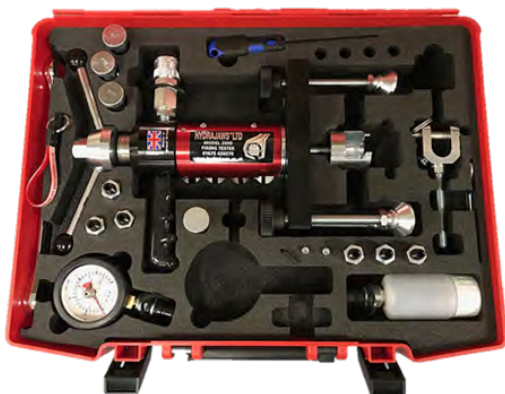
- Model 2000 Medium Duty Fixing Testers - enabling engineers to confirm the holding power of anchors in most construction materials.
- The Model 2000 Eye Bolt Kit comprises the necessary accessories to enable the pull test of common eye bolt and ring bolt fixings.

KIT CONTENTS:

1. Model 2000 medium duty tester
2. 50mm Stroke tester body
3. 15kN Gauge
4. 150 Load spreading bridge with level bubbles
5. 75mm Hex legs with 25mm leg extension adjustment
6. Swivel feet
7. M12 Locking adaptor
8. M12 Ringbolt adaptor clevis
9. Operating nut
10. 3mm Ball driver
11. Allan key
12. Spare screws
13. Carry case with filler
14. Operating instructions
15. Calibration certificate

Product Code	Description	Qty	Weight (kg)
TESTER001	Hydrajaws Pull Tester Model 2000	1	8.000

Hydrajaws Pull Tester - MODEL 2000 DELUXE PLUS



- The Model 2000 Deluxe 'PLUS' Kit is our general purpose kit and features a gauge of choice and a comprehensive range of accessories to cover a wide range of pull test situations.
- Fixings and anchors from M4 to M20 can be tested as standard, while the variety of adaptors enable a wide range of other types and sizes to be tested including: - all industry specific Scaffold fixings including ringbolts and drop in anchors. - any eyebolt and ringbolt across multiple applications.
- Other accessories include 50mm and 75mm Hex Extension Legs should there be a requirement to extend the gap between the tester jaw and the fixings.

Important:

- An important point regarding specifying a 30kN gauge is that Hydrajaws insists that 75mm hex extension legs are purchased with a 'Deluxe' type tester kit and that these are installed on the load spreading bridge when loads exceed 25kN to reinforce the standard threaded legs. The new 'Deluxe PLUS' and 'Deluxe Master PLUS' tester kits feature these legs as standard.

Product Code	Description	Qty
TESTER006	with 1 Analogue gauge (0-30kN)	1
TESTER007	with 1 Digital gauge (0-30kN)	1
TESTER008	with 1 Bluetooth Digital* (0-30kN)	1

‘Complete Solutions’

EZY-SPEC VERTICAL LIFELINE

SafetyLink's EZY-SPEC™ safe ladder access system is designed to be installed on a multitude of fixed ladders and ascending constructions.

The system accommodates climbing structures found on telecommunication towers, water tanks, mono poles, buildings, antennas and similar structures requiring safe worker access.

The EZY-SPEC™ vertical lifeline system works in conjunction with the SafetyLink auto locking Vertical Shuttle Device.

The system will safely protect workers ascending and descending whilst climbing fixed ladders or similar access structures in the event of a fall occurring.

- Low profile design.
- One user per system.
- Easy installation fitting to majority of ladder and pole profiles.
- Drone Inspectable.
- Fall Indicator.
- Earth Tag Line.





EZY-Spec

Vertical Lifeline

EZY-SPEC VERTICAL LIFELINE



The EZY-SPEC can be mounted on most structures that require vertical access, some of these include:

- Permanent Ladders
- Communication towers
- Monopoles
- Silos
- And more...

SafetyLink's EZY-SPEC Bolt on Kit (Top 1575mm and Bottom Bracket)



- The top bracket of the EZY-SPEC™ cable vertical lifeline has a built in energy absorber with fall indicator.
- Allow for the vertical lifeline to terminate at the last rung.
- Bottom bracket with built-in tension indicator and earthing wire.

PRODUCT CODE: EZYSPC001

Components	Description	Material	Qty
EZYSPC001.01_1575	Top End Bracket		1
EZYSPC001.02	Bottom End Bracket		1
EZYSPC001.03	Housing	316SS	1
EZYSPC001.04	Spring	316SS	1
EZYSPC001.05	Plunger	316SS	1
BOLT-M4x8mm-SS	Bolt M4x8	316SS	1
WASHER M12	M12 Washer	316SS	1
NUT M12	M12 Nut	316SS	2
EZYTENS004	Swageless Tensioner	316SS	1
BOLTU-M10-Gal	M10 U Bolt	Gal Steel	6
WASHER M10-Gal	M10 Washer	Gal Steel	12
WASHER M10 Spring_GAL	M10 Spring Washer	Gal Steel	12
Nut M10_GAL	M10 Nut Galvanised Steel*Special UT	Gal Steel	13
EZYSPC001.07	Loose Nut Indicator		6
EZYSPC001.08	Plate Bracket		2
EZYSPC001.09	Energy Absorber	316SS	1
EZYSPC001.06	Spacer Bush		3
NUT NYLOC M16_316	M16 Nyloc Nut	316SS	1
BOLT-M16x50mm-SS	M16x50mm Bolt	316SS	1
EZYTERM003.01	Crimped Termination	316SS	1
BOLY-M12x40mm	M12x40mm Bolt	316SS	1
NUT NYLOC M12_316	M12 Nyloc Nut	316SS	1
EZYETH001	Earthing Wire		1
EYEHANGER12	Eyehanger	316SS	1

SafetyLink's EZY-SPEC Bolt on Kit (Top 1575mm)

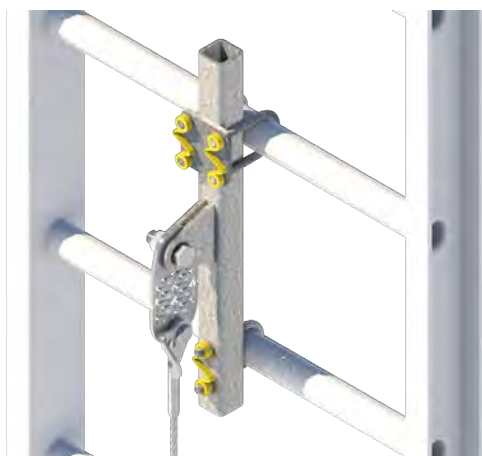


- The top bracket of the EZY-SPEC™ cable vertical lifeline has a built in energy absorber with fall indicator.
- Allows for protection one metre above the last rung.

PRODUCT CODE: EZYSPC001-TOP1575

Components	Description	Material	Qty
EZYSPC001.01_1575	Top End Bracket		1
BOLTU-M10-Gal	M10 U Bolt	Gal Steel	3
WASHER M10-Gal	M10 Washer	Gal Steel	6
WASHER M10 Spring_GAL	M10 Spring Washer	Gal Steel	6
Nut M10_GAL	M10 Nut *Special UT	Gal Steel	6
EZYSPC001.07	Loose Nut Indicator		3
EZYSPC001.08	Plate Bracket		1
EZYSPC001.09	Energy Absorber	316SS	1
EZYSPC001.06	Spacer Bush		2
NUT NYLOC M16_316	M16 Nyloc Nut	316SS	1
BOLT-M16x50mm-SS	M16x50mm Bolt	316SS	1
EZYTERM003.01	Crimped Termination	316SS	1
BOLY-M12x40mm	M12x40mm Bolt	316SS	1
NUT NYLOC M12_316	M12 Nyloc Nut	316SS	1
WASHER M12	M12 Washer	316SS	1
EYEHANGER12	Eyehanger	316SS	1

SafetyLink's EZY-SPEC Bolt on Kit (Top 485mm)



- The top bracket of the EZY-SPEC™ cable vertical lifeline has a built in energy absorber with fall indicator.
- Allow for the vertical lifeline to terminate at the last rung.

PRODUCT CODE: EZYSPC001-TOP485

Components	Description	Material	Qty
EZYSPC001.01_485	Top End Bracket (485mm)		1
BOLTU-M10-Gal	M10 U Bolt	Gal Steel	3
WASHER M10-Gal	M10 Washer	Gal Steel	6
WASHER M10 Spring_GAL	M10 Spring Washer	Gal Steel	6
Nut M10_GAL	M10 Nut *Special UT	Gal Steel	6
EZYSPC001.07	Loose Nut Indicator		3
EZYSPC001.08	Plate Bracket		1
EZYSPC001.09	Energy Absorber	316SS	1
EZYSPC001.06	Spacer Bush		2
NUT NYLOC M16_316	M16 Nyloc Nut	316SS	1
BOLT-M16x50mm-SS	M16x50mm Bolt	316SS	1
EZYTERM003.01	Crimped Termination	316SS	1
BOLY-M12x40mm	M12x40mm Bolt	316SS	1
NUT NYLOC M12_316	M12 Nyloc Nut	316SS	1
WASHER M12	M12 Washer	316SS	1
EYEHANGER12	Eyehanger	316SS	1

SafetyLink's EZY-SPEC Bolt on Kit (Bottom Bracket)



- Bottom bracket with built-in tension indicator and earthing wire.

PRODUCT CODE: EZYSPC001-BTM

Components	Description	Material	Qty
EZYSPC001.02	Bottom End Bracket		1
EZYSPC001.03	Housing	316SS	1
EZYSPC001.04	Spring		1
EZYSPC001.05	Plunger	316SS	1
BOLT-M4x8mm-SS	Bolt M4x8mm	316SS	1
NUT M12	M12 Nut	316SS	2
EZYTENSRO04	Swageless Tensioner	316SS	1
BOLTU-M10-Gal	M10 U Bolt	Gal Steel	3
WASHER M10-Gal	M10 Washer	Gal Steel	6
WASHER M10 Spring_GAL	M10 Spring Washer	Gal Steel	6
Nut M10_GAL	M10 Nut *Special UT	Gal Steel	6
EZYSPC001.07	Loose Nut Indicator		3
EZYSPC001.08	Plate Bracket		1
EZYSPC001.06	Spacer Bush		1
EZYETH001	Earthing Wire		1

EZY-SPEC VERTICAL LIFELINE



The EZY-SPEC can be mounted on most structures that require vertical access, some of these include:

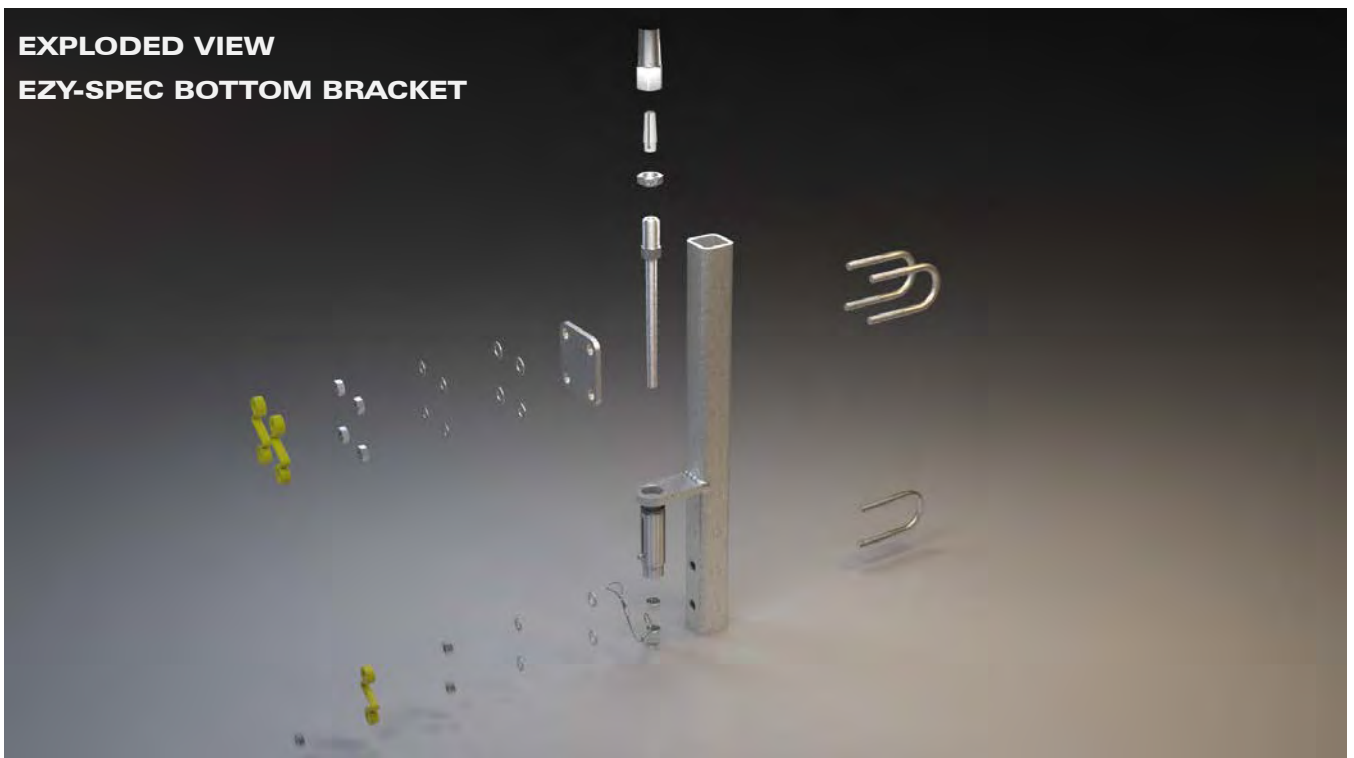
- Permanent Ladders
- Communication towers
- Monopoles
- Silos
- And more...

EZY-SPEC VERTICAL LIFELINE

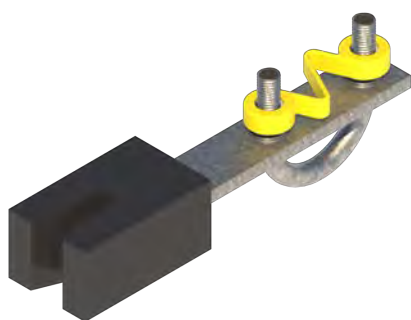
- Low profile design.
- One user per system.
- Easy installation fitting to majority of ladder and pole profiles.
- Drone Inspectable.
- Fall Indicator.
- Earth Tag Line.

EXPLODED VIEW

EZY-SPEC BOTTOM BRACKET



EZY SPEC Cable Guide Straight KIT

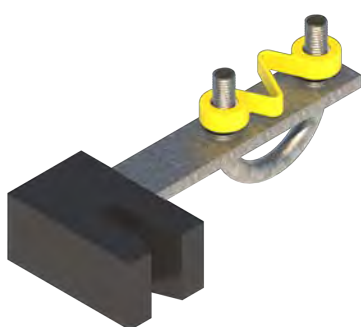


- Protects the cable from chaffing against the ladder or structure.
- Prevents climber from deflecting the cable from side to side.

PRODUCT CODE: EZYGDE001

Components	Description	Material	Qty
EZYGDE001.01	EZY SPEC Cable Guide Straight		1
BOLTU-M10-Gal	M10 U Bolt	Gal Steel	1
WASHER M10-Gal	M10 Washer	Gal Steel	2
WASHER M10 Spring_GAL	M10 Spring Washer	Gal Steel	2
Nut M10_GAL	M10 Nut *Special UT	Gal Steel	2
EZYSPC001.07	Loose Nut Indicator		1

EZY SPEC Cable Guide 90 Degrees KIT



- Angled cable guides suitable for high wind areas.
- The angled shaped cable guides should be alternated with opening on the left, then right, etc. up the ladder.

PRODUCT CODE: EZYGDE002

Components	Description	Material	Qty
EZYGDE002.01	EZY SPEC Cable Guide 90 degree		1
BOLTU-M10-Gal	M10 U Bolt	Gal Steel	1
WASHER M10-Gal	M10 Washer	Gal Steel	2
WASHER M10 Spring_GAL	M10 Spring Washer	Gal Steel	2
Nut M10_GAL	M10 Nut *Special UT	Gal Steel	2
EZYSPC001.07	Loose Nut Indicator		1

SafetyLink's EZY-Spec Shuttle with Karabiner and Shock Pack



- Will track up or down with user vertically and self lock if a fall occurs.
- Can be installed/removed mid-line.
- For use on 8mm stainless steel or galvanised wire only.

PRODUCT CODE: EZYSHUT002

Components	Description	Material	Qty

Cable



- For use on SafetyLink Lifeline Systems.
- 316 Stainless steel cable.
- 8mm diameter.

Product Code	Description	Material	Qty
STAT.CABLE001	Cable: 8mm 7x7, per metre	316SS	1
STAT.CABLE001.01	Roll Cable: 8mm 7x7, 305 metres	316SS	1

SafetyLink's EZY-Spec Warning Sign

- Essential entry point information for safety system.
- Notes installer information, safe use and inspection details.
- Size

PRODUCT CODE: EZYWRN001

Components	Description	Material	Qty
EZYWRN001	EZY-Spec Warning Sign		1

‘Complete Solutions’

SafetyLink supply all height safety equipment to all industries - buildings, commercial and industrial sites. From a series of anchor points to a complete network of systems for maintenance, cleaning access and inspections, SafetyLink has you covered.

All SafetyLink products undergo extensive testing in a multitude of scenarios by accredited testing facilities and comply to Australian and New Zealand standards.

SafetyLink's experienced technical team is complemented with comprehensive installation manuals and testing certificates. We have national qualified installers keeping your assets safe.



Self



Retracting Lanyards

SRL - AERO BLOC

Ergonomically designed to be used as a single person fall protection device. The Aero-Bloc's lightweight compact design fits comfortably to the users harness keeping the Aero-Bloc out of the workers way.

- Lightweight compact unit.
- SafetyLink's Aero-Bloc has a clear durable housing for ease of unit inspection.
- Built in energy absorber.
- 140kg user rating when connecting to anchorages up to 600mm below the harness attachment location.
- Aluminium connectors with 16kN gate strength.
- Available in both Snap hook and Rebar hooks.
- The housing is constructed from high strength plastic.
- Innovative quick connector to the harness allowing the users ease on connection.

AERO BLOC SELF RETRACTING LIFELINE



- SafetyLink Aero-Bloc Self Retracting Lifeline (SRL) 2 metres.
- External energy absorber.
- Available in both Snap hook and Rebar hook.

PRODUCT CODE: AEROBLOC2M-SH-KB

Components	Description	Qty
AEROBLOC2M-SH	2 metre Self Retracting Lifeline with Snap Hook	1
KARBNR033	Aluminium Karabiner 3600 LBS gate strength, Twist locking and Captive Pin	1

PRODUCT CODE: AEROBLOC2M-RH-KB

Components	Description	Qty
AEROBLOC2M-RH	2 metre Self Retracting Lifeline with Rebar Hook	1
KARBNR033	Aluminium Karabiner 3600 LBS gate strength, Twist locking and Captive Pin	1

AERO BLOC SELF RETRACTING TWIN LIFELINE



- SafetyLink Aero-Bloc Twin Self Retracting Lifeline (SRL) 2 metres.
- External energy absorbers.
- Available in both Snap hooks and Rebar hooks.

PRODUCT CODE: AEROBLOC2M-SH-X2

Components	Description	Qty
AEROBLOC2M-SH	Twin 2 metre Self Retracting Lifeline with Snap Hook	1
AEROCONNECT001	Triple Action Dual Leg Bracket	1

PRODUCT CODE: AEROBLOC2M-RH-X2

Components	Description	Qty
AEROBLOC2M-RH	Twin 2 metre Self Retracting Lifeline with Rebar Hook	1
AEROCONNECT001	Triple Action Dual Leg Bracket	1

SRL - TUFF BLOC

Introducing the TUFF-BLOC, an exciting new addition to SafetyLink’s personal protection range.

The TUFF-BLOC features an energy absorbing over-mould design suitable for robust environments. This unique housing provides protection to the internal mechanisms and allows for easy storage when stacking.

The TUFF-BLOC is available in multiple lengths in both galvanised and stainless steel options.

- Tough durable housing built for hard knocks.
- Ezy-Grip handle providing easy installation when holding up SRL for install.
- Four different lengths 6m, 10m, 15m 20m.
- 5 year service life*
- Complies with EN360:2002 and AS/NZS 1891.3:1997.

*service life may be less than 5 years due to harsh environments. ALL SRL’s should be inspected before and after each use.

TUFF BLOC SELF RETRACTING LIFELINE



- 140kg rated.
- Built in fall indicator.
- Galvanised and stainless steel options.
- Connector options available, either karabiner or snap hook.
- Carry/storage clip.

Product Code	Description	Qty
TUFF-BLOC006	Self Retracting Lifeline - 6 metres	1
TUFF-BLOC010	Self Retracting Lifeline - 10 metres	1
TUFF-BLOC015	Self Retracting Lifeline - 15 metres	1
TUFF-BLOC020	Self Retracting Lifeline - 20 metres	1

‘Complete Solutions’



ROOF

Users must be trained and competent in the use of personal protection equipment for working at heights and consult AS/NZS 1891.4 regarding selection, use and maintenance.

A risk assessment and rescue plan must be completed prior to undertaking any tasks requiring the use of this equipment.





WORKERS KIT

- All products must be used within their intended design only.
- Failure to follow all warnings and instructions may result in a serious injury or death.
- Harnesses must be inspected as safe everytime before use and after each use.
- Six monthly logged safety inspections are to be completed by a competent person (refer to harness care/maintenance instructions).

ROOF WORKERS KIT

- SafetyLink's Xtralight harness is fitted with all alloy hardware to reduce weight on the user.
- 5 point adjustable Xtralight harness which caters for a wider range of personnel.
- Xtralight harness equipped with dorsal extension strap for ease of connection to rear fall arrest point.
- 20 metre rope line with lightweight rope grab and built in energy absorber to give you greater access.
- SafetyLink's roofers kit protects users up to 140kg.
- Aluminium double action karabiners with 16kN gate strength to help eliminate forced rollout.
- Heavy duty backpack with external clear window for inspection record card storage.

SafetyLink's PREMIUM ROOF WORKERS KIT includes extra

- Suspension Trauma Relief Straps.
- SafetyLink TempLink 3000 (Temporary Roof Anchor).

Trauma Relief Straps



- Suspension trauma relief straps.
- To be used in conjunction with a full body harness.
- Designed to aid in the prevention of suspension trauma after a fall from height has occurred.

PRODUCT CODE: TRAUMA002

Components	Description	Material	Qty
TRAUMA002	Trauma Relief Strap Set	Nylon	1

Temporary Anchor



- The TempLink can be installed directly on **timber rafters** or through **metal roof sheeting** to battens, secure with six (6) 14g 75mm roofing screws.
- 360° Multi-directional, enabling full rotation around the anchor.
- One person anchor.
- Easy to secure with adjustable stainless steel mounting tabs.
- UV coated cable, protective rubberised sleeve preventing damage to roof materials.
- Eyelet 33.8mm ID.

PRODUCT CODE: TEMPL003

Components	Description	Material	Qty
TEMPL003	Temporary Anchor	3116SS	1

Product Code	Description	Weight (kg)
ROOFKIT_SL	Roof Workers Kit	
ROOFKIT_SL+TEMPLINK	Premium Roof Workers Kit with TRAUMA002+TEMPL003	

Harness XtraLight



- Lightweight.
- Front and Rear attachment points.
- Gear Loops for rescue scenarios.
- Adjustable quality alloy buckles creating maximum user adjustment.
- Traceability label pack includes a page that can be easily marked with site specific traceability documentation.

PRODUCT CODE: HARNES017

Components	Description	Material	Qty
HARNES018	Harness	Nylon/Alloy	1

Rope Line 20m



- 20 metre Adjustable Rope Line.
- Light weight alloy Rope Grab.
- 140kg Shock Pack and two Karabiners.

PRODUCT CODE: ROPELN013

Components	Description	Material	Qty
ROPELN013	20m Rope Line	Alloy	1

Anchor Sling



- 1.5 metre red 20mm Webbing Anchor Strap.
- Flat construction.
- Rated to 21kN.

PRODUCT CODE: ASTRAP003

Components	Description	Material	Qty
ASTRAP003	Anchor Strap	Nylon	1

Karabiner



- High strength aluminium Karabiner.
- Minimum breaking strength Rated 23kN.
- Gate opening 17mm.
- Double action, 16kN Rated gate strength.

PRODUCT CODE: KARBNR022

Components	Description	Material	Qty
KARBNR002	Karabiner	Alu	2

Gear Bag



- Heavy duty nylon.
- Easy fold down opening, convenient to carry.
- Top carry handle.
- Adjustable chest and waist straps.
- External clear window for inspection record card storage.

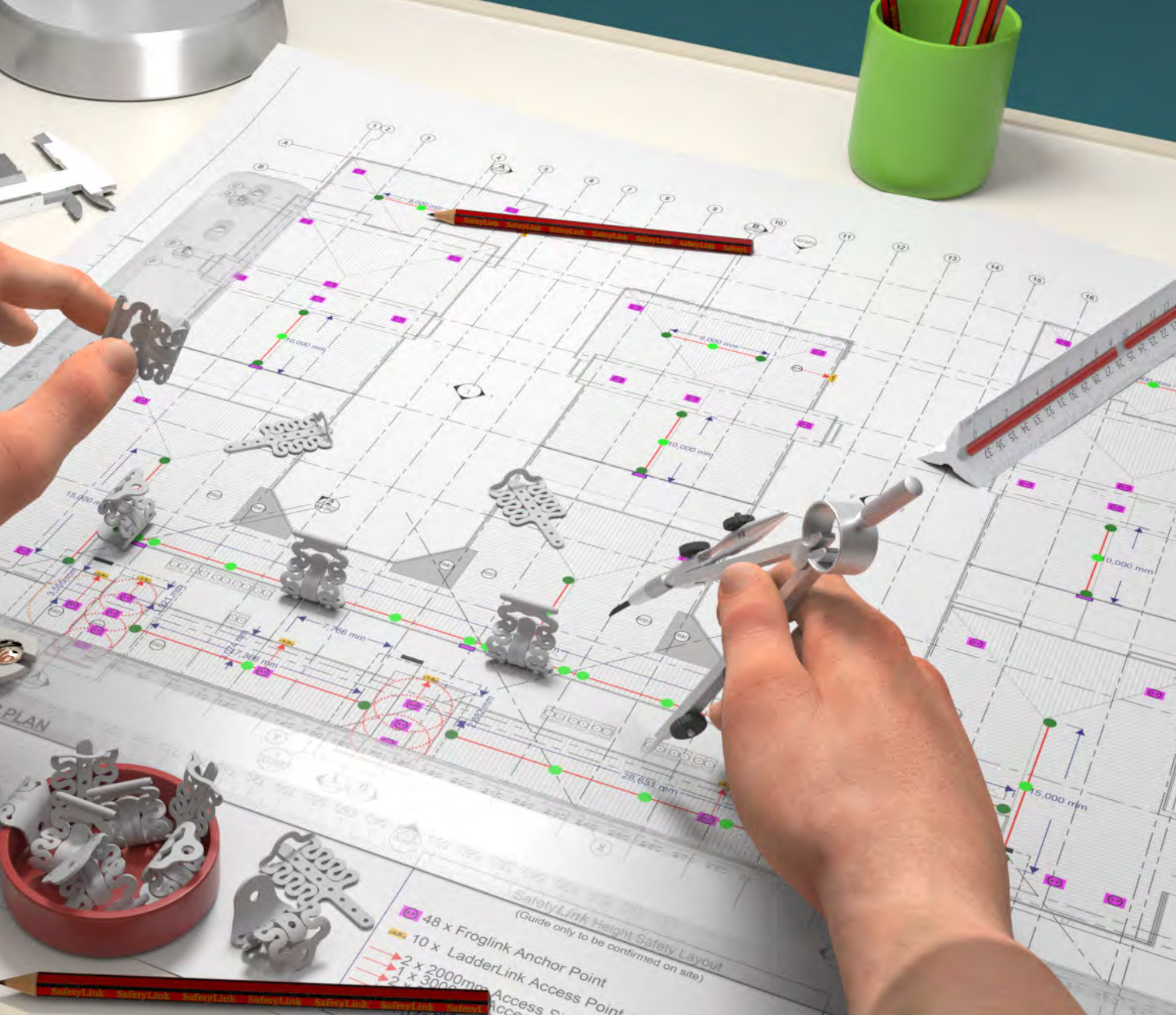
PRODUCT CODE: BAGSL01

Components	Description	Material	Qty
BAGSL01	Gear Bag	Nylon	1

‘Innovative Fall Protection’



SafetyLink Terms and Conditions



EXPERT FALL PROTECTION PLANNING

SafetyLink's design and planning team are here to help work out the positioning of your fall protection system. Ensuring all areas of your roof are accessed safely.

Things to consider when planning your roof layout:

- Are all areas of your roof protected, allowing complete access when working at heights?
- Are you protected from the ground up, allowing complete access to your roof?
- Detailed comprehensive documentation provided.
- Contact our design team at info@safetylink.com and we can plan your fall arrest system for you.

Notes

[illegible]



FS 707792



SafetyLink®

*Innovative
Fall Protection*

**54 Bonville Avenue,
Thornton NSW 2322 Australia**
info@safetylink.com

1300 789 545 | +61 (0)2 4964 1068

www.safetylink.com